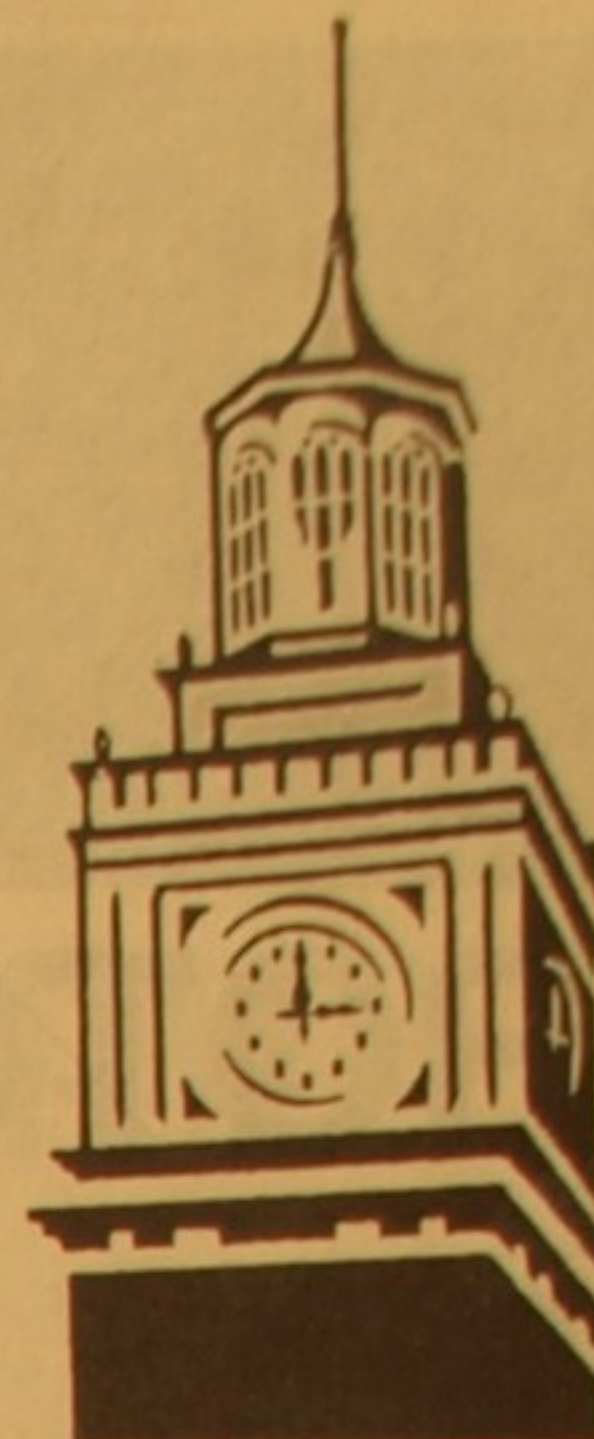




- page 3 Health Column
- page 5 Explore the world exhibit
- page 7 Question of the week

Gov's Basketball	Men	
	Austin Peay	67
	SE Missouri	64
Page 6	Women	
	Austin Peay	96
	SE Missouri	71



# THE ALL STATE

Austin Peay State University NEWS FEATURES SPORTS OPINION

Volume 71, Issue 15

Serving the Austin Peay Community Since 1929

February 9, 2000

## New interim president moves in



Dr. Sherry Hoppe

By Holli Froemming  
news editor

Austin Peay State University welcomed its new interim president, Dr. Sherry Hoppe, Feb. 1 during a ceremony at the Woodward Library.

Hoppe was appointed by the Tennessee Board of Regents to serve as the interim president at Austin Peay following Dr. Sal Rinella's decision to resign. Hoppe

will serve until a new president is chosen.

The search for a new permanent president is delayed while the TBR searches for a new chancellor.

Charles Smith retired from the position of chancellor on Dec. 6.

Smith said Hoppe was chosen because of her wealth of experience and success as an academic leader. She is also known for her interest in

technological advancement.

A community reception, hosted by the Alumni Board, is set for Feb. 25 from 5-6 p.m.

Hoppe comes to Austin Peay from Roane State Community College, where she is currently the president.

She has also worked as an interim president at Nashville State Technical Institute and she's held various positions at Chattanooga State Technical Community College.

Hoppe is the first woman to serve Austin Peay as president. She says gender has nothing to do with good leadership.

Hoppe's other activities include serving on the Board of Trustees for the Southern Association of Colleges and Schools, the Tennessee Higher Education Commission's Strategic Planning Task Force and Performance Funding Task Force.

Hoppe is active in the community as well. AmSouth Advisory Board, Methodist Medical Center (chair), and Oak Ridge Chamber of Commerce (chair) are a few of the community boards on which she serves.

She has been involved in Leadership Chattanooga, Leadership Knoxville and Leadership Roane County.

## Rinella says thanks

By Jerome Parchman  
special projects reporter

Austin Peay State University said farewell to its seventh president Dr. Sal Rinella, Jan. 19.

A reception was conducted in the main entrance of the Felix G. Woodward Library.

Many faculty and staff members attended.

"It has been an honor to have been president of APSU," said Rinella. "Universities are holy places and are like the cathedrals of the middle ages, and are a collection of individuals who care about learning."

Rinella offered thanks to public officials for standing by APSU, the people in the president's office, the vice-presidents and many others serving Austin Peay.

"I would like to thank the faculty; the faculty are at the heart and the center of the university and I thank you for your commitment to the students," said Rinella.

Rinella said that it has been a pleasure to get to know the students.

Rinella concluded by saying, "I am optimistic about the renovations toward the University and the approval for a salary equity plan for staff and faculty."

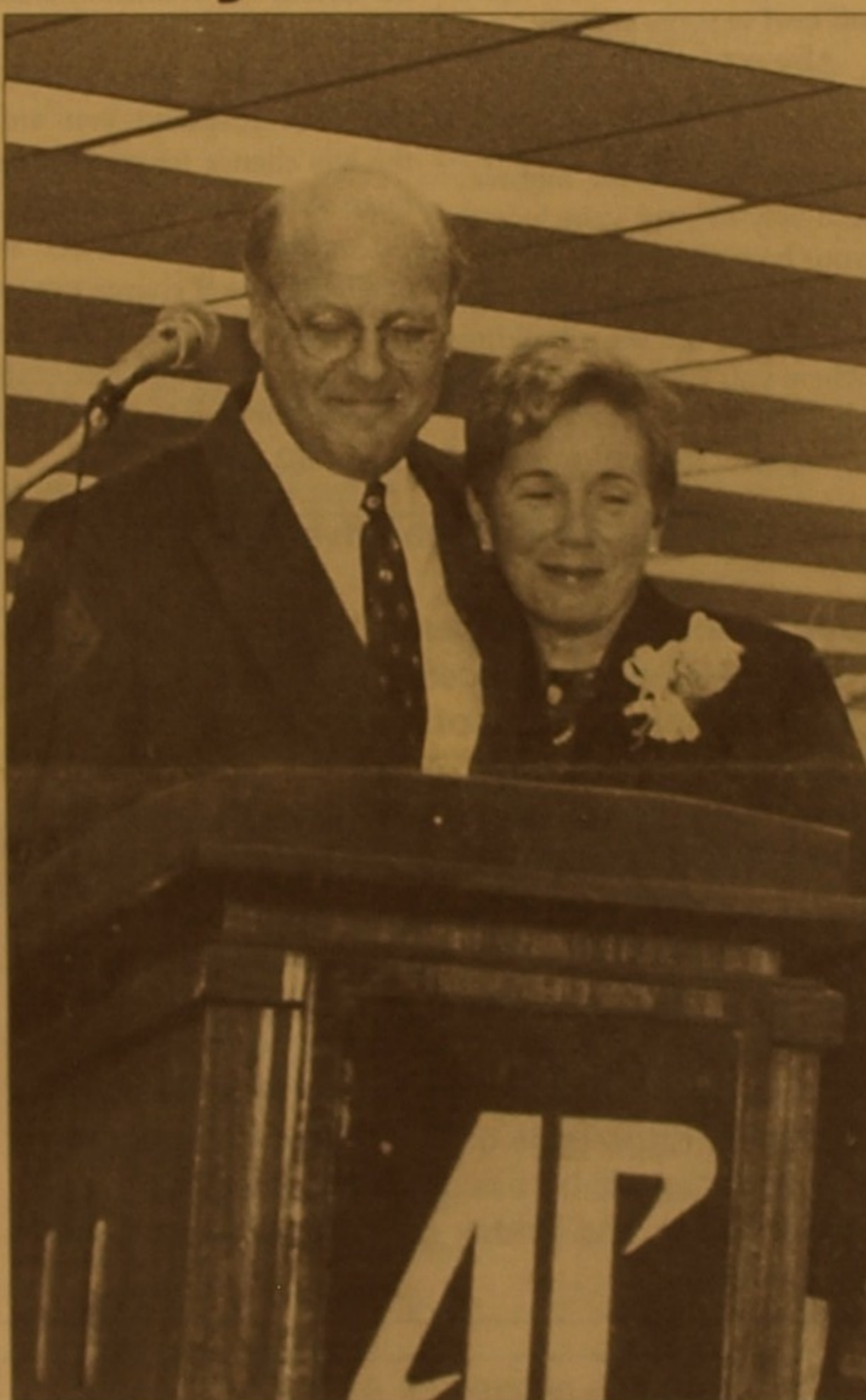


Photo by Tammy Sparks

Dr. and Mrs. Rinella thank the University

"This does not occur very often at Austin Peay, to say goodbye to a president," said Dr. Joe Filippo, assistant vice-president for academic affairs. See Rinella, page 4

## McCain, Gore triumph

By Holli Froemming  
news editor

Republican presidential candidate, John McCain, beat Texas Gov. George W. Bush, while Democrat Al Gore slid past former Sen. Bill Bradley.

McCain, a senator from Arizona, was the underdog going into the New Hampshire primary on Tuesday. He, however, came in ahead by a wide margin of 18 points.

The victory for McCain threatens Bush's campaign, which, prior to Tuesday's loss, had an air of invincibility.

Gore's victory on Tuesday, however, was by a small margin. Bradley trailed by only 4 percent.

"This was a hard-fought campaign. Sen. Bradley was a tough competitor who made us fight for every vote," Gore said, during his victory speech, according to the Associated Press.

The tough fight, he added, has made him a better candidate.

Despite the loss, Bradley vowed to remain in the race. He said the road would be long and hard but he is ready and eager to continue the fight.

Bradley made congratulatory statements to Gore that evening.

McCain, a former Navy pilot who spent 5 1/2 years as a prisoner of war in Vietnam,

has also pulled ahead in the polls in S. C. since his victory in N.H.

McCain, who had trailed Bush by at least 20 percentage points in polls before N.H., gained a five-point lead among those likely to vote in the primary on Feb. 19.

Gary Bauer, a strong anti-abortion activist, received 1 percent of the vote. He announced Friday his decision to pull out of the campaign.

Bauer is the sixth Republican candidate to end his campaign for the Presidency this year.

Tennessee holds its primary on Mar. 14.

## SGA enforces dedication

By Jerome Parchman  
special projects reporter

The Student Government Association hopes for an increase in productivity this semester.

SGA vice-president, Jennifer Rimmer, assigned each senator an individual task that they must do for the students.

"If you do not report on your assignments in two weeks, you will be issued a tardy," said Cynthia Michaels, executive secretary.

"We hope this will be an even more productive semester than last year, and we are eager to get started," said senators Kristen Martin and Dana Carpenter, both freshmen.

"I feel the SGA is beginning to work for the students, rather than giving out money," said Rimmer.

SGA president, Michael Wall, announced there will be a student leadership meeting with APSU interim president, Dr. Sherry Hoppe on Feb 18 at

11 a.m. "Presidents from every APSU organization will be invited," said Wall.

Wall also proposed bleachers for intramural games, a treadmill for the weightroom and a microwave for the Clement lounge.

"If we do not do these things then why are we here?" said Wall.

He also said the weightroom in the Dunn Center needs to be improved or students need to be able to share the room the athletes use.

"The weightroom is crappy. I feel like I'm in somebody's closet," said Sen. Melissa Wildes, freshman. "I am jealous of the athletes because they have good equipment."

Wall also suggested they move Spring Break to the third week in March and that temporary boardwalks be placed around campus so students won't have to walk in the mud.

The big screen TV for the cyber-lounge has been ordered and the computers have been approved by the tech. board.

Wall announced he has cancelled the contract for the student directories in order to protect the privacy of students.

Five new members to their ranks: Nick Ernsberger, fr. political science major, Jennifer Evans, jr. physics major, John Howard, jr. education major, Patrick Malotte, fr. physics major, and Landon Tate, so. history major.

Melissa Beerbower, junior political science major, was sworn in as an associate justice.

## APSU fights winter stress

By Holli Froemming  
news editor

Austin Peay State University's Counseling Center is helping students, faculty, and staff fight the anxiety caused by the recent winter weather.

The snow for the past two weeks has caused harsh weather conditions. Jeff Henderson, a counselor at the APSU Counseling Center, realizes this weather could reignite some of the weather anxiety issues that were seen after the tornado swept through campus January 22, 1999.

"As we start to hear about tornado warnings and watches it will be natural for anyone affected by the tornado to experience some apprehension, but for some people it may cause distress to the point at which counseling could be of benefit," says Henderson.

According to Henderson, symptoms of weather anxiety include, but are not limited to:

sleep disturbance, preoccupation with the weather and moodiness.

He also listed four steps to reducing the potential for anxiety.

- Have a plan for safety.
- Talk to others about fears and concerns.
- Use relaxation and other stress management techniques.
- Consider talking to a counselor.

Tornadoes, however, are not the only weather condition for which to be prepared. Heavy snow or ice can inconvenience, injure, and sometimes kill. People can be trapped in their homes or automobiles.

Areas on campus and around Clarksville had more than six inches of snow by Saturday afternoon. APSU, however, did not cease operation.

See Weather, page 2



Austin Peay students frolic in the snow on campus.

photo by Lisa Martin.

# NEWS

Austin Peay State University

February 9, 2000



## ROTC briefs on new program

By Holli Froemming  
news editor

Austin Peay State University's ROTC program offers cadets the option to join the Simultaneous Membership Program (SMP).

SMP was introduced during a briefing last Thursday as a program that gives cadets the opportunity to drill with the National Guard Reserves, as well as their ROTC group.

The briefing was given by Capt. Sherita B. Anderson, an adjunct professor of military science.

Also speaking at the briefing was Maj. Robert J. Ogden, the Middle Region Commander for Recruiting to the National Guard.

Ogden emphasized the

family life benefits of serving in the National Guard to the cadets present.

"I like the idea of being home," said Ogden.

"My kids have been in the same school the whole time."

Other speakers at the briefing included current participants in the SMP program.

They all pointed out the great training experience gained from the program.

Information about the program, scholarships, and pay benefits were emphasized as well.

"We're trying to increase membership in the program," said Anderson, explaining the motivation behind the meeting.



photo by Mat LaVigne

Maj. Ogden briefs cadets about the SMP.

### Weather

continued from page 1

As Middle Tennessee is in the heart of the winter season, Derrel Martin, a meteorologist for the Nashville National Weather Service (NNWS), encourages everyone in this region to be prepared for any weather condition.

"Winter weather in middle Tennessee, can vary considerably from month to month," says Martin.

"Temperatures can be cold, or relatively warm. Snowfall can be light or heavy.

Freezing rain can devastate much of the area within a few hours... Flooding, also, can be a very significant event."

According to the NNWS's Winter 1999-2000 newsletter, "Even without snow or ice, intense cold can injure or kill a person before a person is aware they are at risk. Fatalities from hypothermia have occurred in air temperature of 40-50 degrees."

The NNWS recommends a few steps to be prepared for a storm. Some of these were not applicable to campus-living, so a few have been modified to make them more appropriate.

•Keep a battery-powered radio and flashlight in working order, with an extra stock of batteries.

•Store drinking water and food that does not need to be cooked.

•Have essential medications on hand.

•Keep your car or truck "winterized."

•Dress for the season and avoid getting wet.

•Stay informed.

•Stay calm and collected; overexertion can bring on a

heart attack, which is a major cause of death during and after winter storms. •If you are isolated at home conserve fuel by keeping your house cooler than usual and cutting off heat to some rooms.

•Do not to drive into worsening conditions.

•If you are trapped in your vehicle, pull off the highway and stay in your vehicle with your hazard lights flashing.

•Do not set out on foot unless you can see a building where you know you can take shelter.

•After the storm stay

informed and contact your family and friends. Establishing a contact person and leaving a note before any necessary evacuation can reduce the amount of confusion after a disaster.

According to the NNWS, the more prepared you are, the less chance for something to go wrong during a storm.

Counseling at APSU is available free of charge to any currently enrolled student. To make an appointment, call 221-6162 or stop by Ellington, Room 222.

### General Campus Job Advertisement

**Job Title:** Student Worker

**Office:** Human Resources

**Approximate number of hours:** 12-15

**Qualifications:** 40 wpm preferred, telephone etiquette, filing, WordPerfect, 10-key adding machine.

**Duties and Responsibility:** Must be articulate, have neat appearance, work well with other, answer telephone lines, meet and greet the public, answer general questions regarding employment applications, current job openings, work with adding machine, work with figures, and file alphabetically. Knowledge of WordPerfect required. Other duties will be assigned. **Monday, Wednesday and Friday morning hours are highly desirable.**

**Lab Assistants** needed for APSU/Engineering Technology Computer Lab at Fort Campbell. Workers must have transportation to Fort Campbell to work during daytime, evening and weekend hours. Duties include general lab monitoring and assisting users with software, including word processors, spreadsheets, AUTOCAD, and other applications. Apply through the Student Financial Aid Office in Ellington. Qualifications: Mature, responsible engineering technology or computer science students are preferred; must have successfully completed ENDT 1000/100L, and/or CSCI 1010. Must be proficient with WordPerfect, Quattro Pro, and other software used in ENGT labs. Will assist with classroom and computer lab assignments.

### WANTED:

Current or prior service MI personnel with TS/SBI clearance. Drill at Fort Campbell, KY. Must be able to qualify in MOS. Interested? Call Ms. Lane at (931) 647-8279 or (270) 798-3022/4802.

### "THE LIBRARY"

(At the corner of Main and University)

**\*\*LUNCH SPECIALS\*\***

Mon-Fri

10% Discount with APSU I.D.  
New Happy Hours-open -7

## The APSU Scoop

Feb. 10

### Bioterrorism Preparation

Dr. Michael Kimbrell, Tennessee Department of Health and Laboratory Services will give a seminar titled "Laboratory Preparedness for Bioterrorism Action" at noon in Room 202 in the McCord Building. The seminar is free and open to the public.

### Faculty Member Recital

Dr. Patricia Halbeck, piano and associate professor of music, will perform at 7 p.m. The concert will be held in the Concert Hall of the music/mass communication building; it is free and open to the public.

Feb. 14

### Eating Disorder Screenings

See article on page 4.

### Guest Slide Lecturer

Marjorie Amdur, a guest installation artist, will present her work via slides in Trahern Room 401 at 7 p.m.

### New Music to be Performed

See article on page 4.

Feb. 15

### Music for the millennium

Adjunct Instructor of Music, Valerie Oyen-Larson, mezzo-soprano, will perform at 7 p.m. She will be accompanied by faculty pianist Amy Glass, as well as the APSU Jazz Combo under the direction of David Steinquest. The recital is free and open to the public. For more information call 221-7181.

### Make something happen

The University Program Council is hosting an interest meeting at 7 p.m. in the Ball Barn, Room 107. All students are welcome. Refreshments will be served. For more information call 221-7431.

### Other news

### "The Message" showing

The philosophy and history programs invite all interested students to a showing of "The Message." The movie tells the story of the beginnings of Islam. Contact Bert Randall at 221-7479 or 221-7919 by Feb. 11 if you plan to attend or for more information. The showing is Feb. 23 at 5 p.m.

### APSU plans for quality workforce

APSU joins with the Clarksville Area Chamber of Commerce to improve economic development and provide a higher quality of living for area residents.

A five-year program has been established to build a multi-county Workforce Development Consortium in order to create and sustain a highly educated and skilled workforce.

Dr. Stan Groppe, director of APSU's Business Community Solution Center, says the cooperation of members of the consortium is necessary for community prosperity.

For more information call (931) 221-7816.

## SPRING SEMESTER EXTENDED HOURS

In addition to normal hours,  
the following offices will be open

Every Monday - 4:30 to 6 p.m.

Admissions  
Business Office  
Career Services  
Counseling Center  
Disability Services  
Office of the Registrar  
Student Affairs  
Student Development Center  
Student Financial Aid

# NEWS

Austin Peay State University

February 9, 2000



## Students examine crime on campus

By Lindsay Chambers  
guest writer

The media often portray our schools as violent, unsafe places, but how much are students truly at risk?

Based on a recent survey of high schoolers conducted by CBS News and the "New York Times," students feel safe, but also believe violence could happen at their schools.

A psychology research methods class at Austin Peay State University conducted a similar survey to determine if students feel safe on the University's campus.

The class, led by Dr.

Thomas Timmerman, assistant professor of psychology, asked a group of 82 undergraduate students from 30 different majors several questions about their perceptions of campus violence.

The survey primarily measured perceptions of fear and risk, two factors affecting students' feelings of safety on Austin Peay's campus.

Respondents answered questions on a scale from one to 10, with the higher end of the scale representing more feelings of risk.

The majority of students reported feeling safe, though

women perceived themselves to be at greater risk.

Most students also believed a violent crime was more likely to happen to someone else than to them, and that they were able to prevent themselves from becoming victims of crimes.

For instance, while 3.75 percent of students believed there was a chance they might be assaulted with a weapon while on campus, a full 30 percent reported a likelihood that it would happen to someone else.

"Results seem to indicate that students are using inaccurate perceptions about the prevalence of crime as motivation to protect themselves," Timmerman said. "The unanswered question is: Do students feel safe because they are aware of good crime-prevention strategies, or because they think they're invulnerable?"

A second finding of the study involved students' perceptions of the number of violent occurrences on campus.

When students were asked to guess the number of violent crimes that occurred on campus in 1998, the average estimate was 51. The actual number of these incidents reported by APSU campus police, however, is only four.

"These objective estimates reveal students' belief that violent crime is much more prevalent than it actually is," Timmerman said. "In spite of this, they feel safe."

Another purpose of the study was to examine the short-term effects of anti-violence information published by groups such as the American Psychological Association and the National Council for the Prevention of Crime.

These organizations produce materials designed to reduce fear and risk perceptions, while increasing feelings of control over crime.

The study showed that the materials produced a slight decrease in fear, but did not affect risk perceptions. They also had little influence over feelings of control.

"Organizations need to do a better job of systematically evaluating the effect of their materials," Timmerman said in conclusion. "Otherwise, money that could be used to effectively fight crime might be wasted."

### Rinella

continued from page 1

Filippo said there have been many positive influences left by the Rinellas.

"Dr. Rinella, you have made a tremendous impact on this campus, and you have been seen by the community as a leader for issues that impact African-Americans," said Dr.

Jacqueline Wade, director of the African-American cultural center.

"Not very often do you go to a main campus where you see a president strolling on campus and you do not see a president attend so many events," said Michael Wall, Student Government Association president.

"Rinella will best be remembered most as a

builder," said Dr. Steven Pontius, vice-president of academic affairs. "You have been a leader and a man of vision."

The Rinellas will move to California to be closer to their children. Rinella will pursue private sector consulting and teaching opportunities.

"I wish you all Godspeed and the very best for APSU in the future," said Rinella.

## HEALTH COLUMN

### Meningitis threat in Clarksville

By Holli Froemming  
news editor

A case of bacterial meningitis was reported by health officials in Clarksville on Jan. 28.

Meningitis is a communicable disease but is not widespread.

Dr. Allen Craig, Deputy State Epidemiologist with the Tennessee Department of Health, says it is unlikely for another case to be reported in Montgomery County this year.

Although Craig says the general public should not be concerned, he adds that if a person starts to feel very ill, they should contact their doctor or health care provider.

Meningitis is caused by a bacterium that either infects the blood or inflames the lining of the brain and spinal cord.

It is spread through coughing, sneezing, and the sharing of food or utensils.

Symptoms include high fever, headache, stiff neck, and vomiting. Infants with meningitis can show irritability, including a high-pitched cry.

Anyone infected may become seriously ill within a few hours. If you suspect you have meningitis, call your doctor immediately.

Meningitis may be treated with antibiotics. For those who have been exposed to the bacteria, antibiotics and/or a vaccine is available.

Lisa Fletcher, communicable disease director for the

Tennessee Department of Health's Mid-Cumberland Regional Office, said two cases were reported in Montgomery County last year.

Meningitis affects between 11,000 and 12,000 people per year in the United States.

### Sexual Responsibility Week Feb. 13 - 19

By Laura Murley  
health adviser

Sexual responsibility in relationships means more than just using birth control or condoms.

Relationships can be a fun new aspect to college life.

According to a recent publication by Bacchus and Gamma Peer Education Network, the ingredients of a healthy relationship are respect, honesty, trust and communication.

How do these aspects apply to sexual responsibility?

"My partner and I respect each other in that we care about the other's dreams, hopes and values," says Brandy, 20.

"We both want the other's input and have mutual respect for the other in all areas of our relationship, including the sexual part."

Respect in sexual relationships means deciding together how much or how little will happen.

Henry, 21, says he wants his girlfriend Brooke to know him truly: "I know I

am being honest with her, because I want our relationship to be built on trust."

Honesty in a relationship may be scary. If you feel that you aren't ready for a sexual relationship, be honest with your partner about your feelings.

If he/she really cares about you, they will not only accept your limits, but also appreciate your honesty.

In a sexually active relationship, trust is still the means of measuring our confidence in the relationship.

Trust is a key component of healthy relationships.

Communication is crucial. Partners need to be able to share whether they are comfortable with the level of sexual activity before it actually happens.

Choosing to be abstinent or sexually active is your own decision.

Sexual responsibility is about making informed choices in a relationship and protecting yourself from sexually transmitted diseases.

If you have any questions concerning your health, please write to:

The All State, attn: Health Campus P.O. Box 8334

or e-mail Laura Murley at MurleyL@apsu.edu

You can also call APSU's Student Health Services at 221-7107.

Did You know...?

• Condoms are FREE at Student Health Services.

• Birth Control Pills cost \$2 per package at APSU and is available at Student Health Services.

### 2000 Teacher Recruitment Week

February 21, 22, 23, 24, 25, 2000

#### Where:

February 21 & 25, 2000  
Baptist Student Union  
February 23, 2000  
Wesley Foundation  
February 22 & 24, 2000  
Career Services

Interview Opportunities With the following School Systems. Sign up in Career Services Feb. 7-11, 2000. Hours: Monday 8am - 6pm, Tues through Friday, 8am - 4:30pm. 931-221-7896, Ellington Room 217

#### Monday - Feb. 21, 2000

9 am - 12 noon

Alief Independent Schools - Houston, TX  
Ann Arbor Public Schools - Ann Arbor, MI  
Carroll County Schools - Carrollton, KY  
Charlotte-Mecklenburg Schools - Charlotte, NC  
Charleston County Schools - Charleston, SC  
Christian Co. Schools - Hopkinsville, KY  
Clear Creek Ind. Schools - League City, TX  
Cobb County Schools - Marietta, GA  
Dorchester School District - St. George, SC  
Detroit Public Schools - Detroit, MI  
Gary Community Schools - Gary, IN  
Henry County Schools - New Castle, KY  
Hopkins County Schools - Madisonville, KY  
Knox County Schools - Knoxville, TN  
Los Angeles Unif. School Dist. - Los Angeles, CA  
Omaha Public Schools - Omaha, NE  
Orangeburg Consolidated Schools - Orangeburg, SC  
San Antonio Schools - San Antonio, TX  
Sumner County Schools - Gallatin, TN  
Wichita Public Schools - Wichita, KS

Tuesday - Feb. 22, 2000/9am-12noon  
Nashville/Davidson Co. Schools - Nashville, TN  
Tuesday - Feb. 22, 2000/2pm-5pm  
Nashville/Davidson Co. Schools - Nashville, TN  
Wednesday - Feb. 23, 2000/9 am - 12 noon  
Albuquerque Public Schools - Albuquerque, NM  
Anderson Five - Anderson, SC  
Baltimore Co. Public Schools - Towson, MD  
Champaign Schools Unit 4 - Champaign, IL  
Clayton Co. Public Schools - Jonesboro, GA  
Covington Independent Schools - Covington, KY  
Davies Co. Public Schools - Owensboro, KY  
Douglas Co. Schools - Douglasville, GA  
Evanston/Skokie Schools - Evanston, IL  
Hardin Co. Schools - Elizabethtown, KY  
Logan County Schools - Russellville, KY

Marietta City Schools - Marietta, GA  
Marshall County Schools - Lewisburg, TN  
Wednesday - Feb. 23, 2000/9 am - 12  
Nelson County Schools - Bardonia, KY  
Orange County Public Schools - Orlando, FL  
Palm Springs Schools - Palm Springs, CA  
Shelby County Schools - Memphis, TN  
Shelby County Schools - Shelbyville, KY  
Spring Independent School Dist. - Houston, TX  
Tomball School District - Tomball, TX  
Wednesday - Feb. 23, 2000/2pm - 5pm  
Covington Ind. Schools - Covington, KY  
Greenville County Schools - Greenville, SC  
Hardin Co. Schools - Elizabethtown, KY  
Logan County Schools - Russellville, KY  
Marshall County Schools - Lewisburg, TN  
Memphis City Schools - Memphis, TN  
Sumner County Schools - Gallatin, TN  
Thursday - Feb. 24, 2000/9am - 12noon  
Putnam County Schools - Palatka, FL  
Thursday - Feb. 24, 2000/2pm - 5pm  
Putnam County Schools - Palatka, FL  
Friday - Feb. 25, 2000/9 am - 12 noon  
Bartow County Schools - Cartersville, GA  
Clarksville-Montgomery Co. Schools - Clarksville, TN  
Galena Park I.S.D. - Galena Park, TX  
Genesis Learning Centers - Nashville, TN  
Lauderdale County Schools - Ripley, TN  
Maury County Schools - Columbia, TN  
North East ISD - San Antonio, TX  
Rutherford Co. Schools - Murfreesboro, TN  
Friday - Feb. 25, 2000/ 2 pm - 5 pm  
Bedford County Schools - Shelbyville, TN  
Clarksville-Montgomery Co. Schools - Clarksville, TN  
Hamilton Co Schools - Chattanooga, TN  
Lauderdale County Schools - Ripley, TN

All student teachers and Alumni Education majors are invited to attend a job fair Monday night, Feb. 21 at Vanderbilt University from 3-7 pm.



• All students and alumni must come by Career Services to sign up for an interview.

• Must be currently student teaching or have completed it.

• Need to have a placement file started in Career Services (Personal Data Sheet, Resume and Authorization form) before scheduling any appointments.

• Sign up dates: February 7 - 11, 2000

### The Diamonds and Pearls Valentine's Ball

presented by  
Alpha Kappa Alpha Sorority, Inc.  
&  
Kappa Alpha Psi Fraternity, Inc.

February 12, 2000, 9:30p.m.-until  
@ 112 Legions St.  
(Above Moose Creek)

Tickets available in the Cultural Center  
Feb. 7-10 or at the door  
\$5/person, \$8/couples  
Semiformal attire

Be sure to show your style in the  
Best Dressed Couple Contest!!!

### Obituary

By Sherry Higdon  
guest writer

Hollie Walker, APSU Professor of Health and Human Performances, died Thursday, Jan. 27 after an extended illness.

Walker was born on Feb. 10, 1943 in South Carolina.

Walker is survived by his wife Joyce, APSU accounting clerk and his mother, Nancy Nicholson Walker. Dr. Walker also had three children: Orlando, Kimberly, and Sandra.

Students, faculty and staff were invited to a memorial service in the Trahern Theatre on Wednesday, Feb. 9, at 2 p.m.

The memorial service was held for Walker on Monday, Jan. 31, at 11 a.m. at Morric Chapel Baptist Church in Greenwood, S.C.

# NEWS

Austin Peay State University

February 9, 2000



## Artists perform new style

By Holli Froemming  
news editor

Guest artists will appear in Austin Peay State University's second "Dimensions" New Music Series concert of the season.

The program will feature the winning composition from the 1999 Young Composers Competition at APSU.

Greg Wilder's winning piece, "The Poems of Our Climate," will be performed by faculty members Thomas King, tenor, and Jeffrey Wood, piano.

Guest artists Michelle Areyzaga, soprano, and pianist Jamie Shaak will perform Gwyneth Walker's song

cycles "though love be a day" and "Mornings Innocent."

Wilder received his bachelor of music degree from Bowling Green State University in 1996.

Wilder received his master's degree in composition and piano at The Eastman School of Music in Rochester, N.Y. He continues there working towards his doctorate of musical arts degree, also in composition and piano.

Areyzaga has appeared in several principal roles in operas. She has performed with the Roosevelt University Choir and Orchestra and has won several international awards.

Shaak has performed solo and ensemble concerts throughout the United States and Southeast Asia. She has performed as a soloist with the Illinois Philharmonic Orchestra, the Denver Symphony Orchestra, and several others.

Shaak received a bachelor's degree from The Eastman School of Music and her master's degree from The Juilliard School.

The concert will be at 7:30 p.m. on Monday, Feb. 14 in the concert theatre of the music/mass communication building. A guest artist reception will be held in the lobby immediately following the performance.

## Traffic calls for caution

By Holli Froemming  
news editor

Austin Peay State University and Clarksville officials advise students to cross College Street only at the controlled intersection.

Several near-misses at pedestrian crosswalks called attention to the situation.

According to recent reports, there is confusion about who has the right-of-way at the crosswalks on College Street.

At the two uncontrolled

crossings, motorists were to stop for pedestrians.

At the light, however, pedestrians could only cross when traffic was stopped for a red light.

Motorists and pedestrians both claimed the right of way at each of these crosswalks.

Officials agreed over Christmas break to remove the unregulated pedestrian crosswalks.

The Tennessee Department of Transportation will provide a \$50,000 safety grant to

Clarksville to install a permanent light at the intersection of College Street and University Avenue. This light will replace the temporary traffic signal that was installed following the January 1999 tornado.

It will include a pedestrian-operated crosswalk system.

Until that time students are encouraged to follow normal traffic rules.

The reduced speed for the school zone will remain.



Austin Peay State University students crossing College Street at the temporary stop light on their way to class. photo by Mat LaVigne

## APSU students help Floyd victims

By Holli Froemming  
news editor

Two Austin Peay community members raised money to help East Carolina University after Hurricane Floyd damaged the campus.

Shedrich Webster, a student and residence hall director at APSU, and Pete Blutreich, the assistant director of housing, organized two fund-raising events.

Webster organized a penny drive at Burt Elementary School in Clarksville. For two weeks, each classroom had a

jar in which the students placed pennies.

Each week, the class that brought the most pennies received a prize.

The first week the winning class received tickets to Austin Peay's Homecoming game, donated by the APSU athletic department. The second week's winners received a pizza party, donated by Papa John's.

The pennies were counted by the staff at Legends Bank and totaled \$682. Webster was delighted with the suc-

cess of the drive.

"We received a lot of help after the tornado. I felt it was important to spread that help out to others who were in a similar ordeal," said Webster.

Blutreich organized a chili cook-off on campus.

Budweiser co-sponsored the event and ARAMARK donated the chili.

The proceeds from the event went to ECU and the United Way in Clarksville. They both received \$242.

## Wildflowers sells again

By Holli Froemming  
news editor

Austin Peay State University's Center of Excellence for Field Biology offers a new edition of "Wildflowers of the Land Between the Lakes Region, Kentucky and Tennessee."

Dr. Edward W. Chester and Dr. William H. Ellis, both professors of biology and principle investigators for the Center for Field Biology, wrote the text.

This edition contains 360

color photos of flowering plants. Because the photographs are close-up and vibrant, the text is used to give general information about the plants and their role in the human history of LBL.

The first edition of "Wildflowers" focused on the flowering plants of LBL, with a few non-flowering shrubs and trees. It was published in 1995.

Like the first edition, this one is an educational publication of the Center of Field

Biology, a Tennessee Center of Excellence established in 1986.

"Wildflowers" may be purchased at APSU's Book and Supply Store and various LBL locations.

In addition, the book can be purchased through the Center for Field Biology.

For more information, call (931) 221-7019.

By Holli Froemming  
news editor

Austin Peay State University provides screenings for eating disorders that cause serious health threats.

The screenings will focus on three common eating disorders: anorexia nervosa, bulimia nervosa, and binge-eating disorder. These disorders affect millions of Americans every year.

Symptoms of these disorders include compulsive exercise, negative body image, and a fear of gaining weight.

Jeff Henderson, a counselor at the counseling center emphasized that the screening is not intended to provide a diagnosis of eating disorders. Instead, the purpose is to identify the presence of symptoms.

Resources and information will be provided to allow individuals to follow up and get help, if necessary.

"People with eating disorders find their entire focus is on food, eating and weight," said Henderson.

"The screening program is designed to offer information and resources, which can help them learn to focus their energy and attention onto other things," he added.

This event is part of a national eating disorders screening program. It is also sponsored by the APSU's Counseling Center, Student Health Services, and athletic department, as well as TCMC Behavioral Medicine at Gateway Health System.

The screenings will be held Monday, Feb. 14 from 9 a.m.-3 p.m. in the Dunn Center, Room 248. They are free and open to the public.

For more information, contact the counseling center at (931) 221-6162.

**Spring Break 2000 - Panama City Beach, Florida!**

**SANDPIPER BEACON BEACH RESORT** "The Fun Place!"

- Free Lazy River Ride, Mini Golf, Playground, and Water Slide • 2 Large Outdoor Swimming Pools • Sailboat, Jet Ski & Parasail Rentals
- Hot Beachfront Hot Tub • Suites up to 10 people • Tiki Beach Bar/Entertainment by Boogie, Inc./Bikini Central
- World's Largest Keg Party • Airport Limousine Service

**Spring Break \$149** (one person per night)

**Reservations: 1-800-488-8828**  
**www.sandpiperbeacon.com**

## Crime Report

Dec. 19, 1999, 1:33 a.m. DUI on North 2nd Street.

Arrestee: Daniel A. Armstrong of First 502nd Fort Campbell, Ky

Dec. 25, 1999, 12:12 a.m. DUI on West Avenue

Arrestee: David G. Rittenberry of 880 Needmore Rd., Clarksville, Tn.

Dec. 26, 1999, 12:40 a.m. Fraud/ Impersonation on North 2nd and Jefferson Street.

Arrestee: Jerry M. Wall of 1795 Bridgewood St., Clarksville, Tn.

Jan. 4, 2000, 11:11 p.m. Harassment at Killebrew

Jan. 5, 2000, 3:26 a.m. DUI on College Street.

Arrestee: Steven E. Kennedy of 465 Cardinal Point Ct., Brandenburg, Ky.

Jan. 10, 2000, 6:24 p.m. Vandalism at Meacham

Jan. 11, 2000, 3:05 p.m. Criminal Trespass at Emerald Hills Apartments

Arrestee: Christopher J. Sutton of 576 Poplar Springs Rd., Trenton, Ga.

Jan. 13, 2000, 8:25 a.m. Vandalism on West Avenue. No arrest reported.

Jan. 13, 2000, 1:39 p.m. Theft from Memorial Health

Jan. 23, 2000, 3:24 p.m. Weapon law violation.

Arrestees: Adrian D. Patterson, Ramon Delshenlyle.

Charge: Carrying deadly weapon.

Jan. 23, 2000, 5:51 a.m. Fraud Impersonation

Jan. 27, 2000, 2:09 a.m. D.U.I.

This information was taken from APSU campus police reports.

Deadline for the advertising department is Wednesday the week before the ad should be published.

Please, call us at 221-7376 to place your ad.

# FEATURES

Austin Peay State University

February 9, 2000



## Express true feelings on V-Day



Cupid motivates as love symbol for Valentine's Day.

By Tiffanie Cohoon  
assistant features editor

It is that time of the year again where everyone struggles for the perfect gift.

It is the one day of the year that people take the time out to express how much they care about someone.

It is about love, friendship and family as well.

The only problem is finding a suitable gift.

"I love to receive chocolates from everyone on Valentine's Day," said Tracy Wood, junior communication major.

If you're purchasing a gift for your friends or family then it should be sentimental.

It is a great way to thank that friend who is always there to listen, or that parent who is always willing to help you out.

The present should symbolize respect, appreciation, love, and memories.

Simple gifts such as their favorite CD, body lotion, perfume, clothes, or movie are

quite acceptable presents.

It shows that you know what they like or are interested in.

A picture frame with a photo would be a kind way to express your love.

You could take someone out to eat and have a nice conversation. Quality time is the best way to show love and appreciation.

There is no shame in a homemade gift.

You could make a scrapbook of past memories. That is a tear jerker.

Whatever the present, it should be presented with a card, which is the foremost way to declare your feelings.

Hallmark's *Between you and me* cards are the best.

A gift for a significant other should most importantly be romantic.

For Valentine's Day the gift must come from the heart.

You could buy flowers, candy, balloons or a teddy bear. Hiatt's Florist has a

great selection to choose from.

You could plan an extravagant evening full of adventure like sending your companion on a scavenger hunt with little gifts at each mark. Surprises are always good.

"My girlfriend and I have been together for along time so I am going to get her jewelry for this Valentine's Day," said Josh Finn.

Requesting a song on the radio and dedicating it to your lover is a sweet gesture.

You could take your partner to an upcoming concert.

"I would like my boyfriend to arrange a quiet, romantic, evening alone at home, with presents of course," said Mary Ladd.

Everyone has their own way of showing their love and devotion.

Whatever the gift or act, just show them how much you appreciate and care about them.

## Weekly Events

**Jan.27-Feb. 12:** The Roxy Regional Theatre presents "The Glass Menagerie". Friday and Saturday's at 8 p.m.  
For information call 931-645-7699

**Feb. 4-April 28:** The Clarksville-Montgomery County Museum presents "Earth 2U, Exploring Geography" Open Tue - Sat 10 a.m. - 5 p.m.; Sun 1 - 5 p.m.

**Jan. Thru March : Shared Visions**, Art exhibit at Clarksville-Montgomery County Museum featuring works from two contemporary black artists.  
For information call 931-648-5780

**Saturdays at 11 a.m. and Wednesdays at 7 p.m.:**  
American Tribal Dance  
ABC Dance Studio  
For information call 931-920-5716

**First Monday of each month, 11:30 a.m.:** *Book Review Luncheons*  
Clarksville-Montgomery County Public Library  
For information call 931-648-8826

**NowThrough Feb.11 6:30 p.m.:** *Get Fit 2000*  
City Council Chambers  
For information call 931-645-7476

**Feb. 9 Jazz master classes noon & 3 p.m.:** "Black College Jazz Alumni: To Consider a Legacy"  
Band room, Music/ Mass Communication Building

**Feb. 14, 7 p.m. Guest Artist Slide Lecture:** Trahern 401  
Free and open to public.  
For information call 931-221-7333

**Feb. 14 - Mar. 3, Art Exhibit:** "Threads of Continuity"  
Trahern Gallery  
Free and open to public  
For information call 931-221-7333

**Feb. 15, 9 a.m. : Resume Writing Class**  
Goodwill of Clarksville Employment & Training Center. Cost \$18  
For information call 931-645-2310

**Feb. 14, 7:30 p.m.:** *Dimensions New Music Series*  
Concert Theatre, Music/Mass Communications Building  
Featuring Greg Wilder  
Free and open to the public  
For information call 931-221-7818

**Feb. 16, 6:30 p.m.:** "The Battle of the Sexes"  
Harambee Room, African American Students Association

**Feb. 17, 9 a.m.:** *Interviewing Class*  
Goodwill of Clarksville Employment & Training Center  
Cost \$18  
For information call 931-645-2310

**Feb. 15, 7:30 p.m.:** "Music For the Millennium"  
Faculty Recital: Music/Mass Communication Building

The Student Financial Aid Office will offer renewal application workshops on February 15 at 3:00 p.m. and February 16 at 12:00 noon. We will hold both workshops in room 308 of Ellington Student Services Building. Financial Aid representatives will be available to answer questions about the application process and/or help complete your application. If you would like assistance in completing your renewal application, please bring documentation of taxable and untaxable income for 1999.

### UNCLE BUD'S

STEAKS • SEAFOOD  
CHICKEN

Now hiring for all positions at our newest location opening soon in Clarksville. Casual uniforms and a fun place to work!

SERVERS, CASHIERS,  
COOKS, DISHWASHERS,  
HOSTS

Apply in person  
Mon.-Fri., 9 a.m.-4 p.m.  
3096 Wilma Rudolph Blvd.

## Woo your crush

By Lisa Martin  
music critic

You're probably planning something nice for Valentine's Day, right?

Maybe a candlelight dinner with the object of your affection?

Whatever your plans, the mood of your occasion is very important.

If you want to woo your crush, why not try music?

Love songs are a great way to show your affection with a minimal amount of effort.

If you want something slow and sexy, try 112's self-titled album.

This male R&B group evokes the love gods with their sensual melodies and provocative lyrics.

Their love songs make you want to hold someone, which is probably exactly what you

want from your honey.

If you want to spice up your Valentine's Day celebration, try Santana's "Best of Santana."

This saucy collection features that extraordinarily talented Latin guitarist Carlos Santana.

It's perfect for an upbeat, classical romance.

You can salsa your way into your true love's heart.

This album is great for dancing, which can fire up a romance.

So, whatever your plans for the upcoming holiday, choose your music carefully.

Some sweet tunes could make the difference between fire and fizzle.

### College Republican Meeting

**February 14  
3 p.m.  
Clement RM 132**

Scan in Subway  
image

**10%  
discount  
with  
APSU I.D.**

**Tuesdays**  
*Free* 6' sub  
with the purchase  
of a 6' sub and a  
medium drink

**Sundays**  
3 footlong subs  
for  
\$9.99

651 N. Riverside Dr.

552-9297

### General Campus Job Advertisement

**Job Title:** Student Worker  
**Office:** University Advancement  
**Approximate number of hours:** 15  
**Qualifications:** Must have general office skills, ability to work alone with little supervision, friendly and courteous personality.  
**Duties and Responsibilities:** Typing, filing, answering phone, running errands, preparing mailings, maintaining confidentiality.



## APSU Special

APSU/Clarksville

1475 Madison St.

Hours:

Mon-Thurs. 11:00 - Midnight  
Fri. & Sat. 11:00- 1:00 a.m.  
Sun. noon - Midnight

551-3000

Hours:

Mon-Thurs. 11:00 - Midnight  
Fri. & Sat. 11:00- 1:00 a.m.  
Sun. noon - Midnight

### FREE DELIVERY AND CARRYOUT

One Large  
One Topping  
**\$6.99**

One Large One  
Topping and  
Cheesesticks  
**\$8.99**

Expires 30 days. Not valid with any other offer.  
Valid only at participating locations. Customer pays  
all applicable sales tax. Additional toppings extra.

Expires 12/31/99. Not valid with any other offer.  
Valid only at participating locations. Customer pays  
all applicable sales tax. Additional toppings extra.

Student Discount  
Student Discount  
Student Discount  
Student Discount  
Student Discount  
Student Discount  
Student Discount

One Cheesestick  
&  
One Breadstick  
**\$6.99**

Expires 30 days. Not valid with any other offer.  
Valid only at participating locations. Customer pays  
all applicable sales tax. Additional toppings extra.

Student  
Discount  
Student  
Discount  
Student  
Discount  
Student  
Discount

Campus and downtown only.

# FEATURES

Austin Peay State University

February 9, 2000



## Explore the world at home Kappas set goals

By Roshun Radford  
features editor

Is your knowledge of geography limited?

Then you might want to head over to the Clarksville-Montgomery County Museum while geography is a hot topic.

The museum will feature a new geographical exhibit open to the public Feb. 5 and will continue through April 30.

"You wouldn't believe this thing," said B.J. Miksic, the Marketing/Rental director of the museum, as she

described the dynamics of the exhibit.

Speaking of dynamics, the museum used volunteers along with regular staff members to help unload large crates containing the exhibit.

The exhibit is funded and sponsored by the Smithsonian Institution Traveling Exhibition Service, National Geographic Society, and Nissan North America.

According to Miksic, a survey, taken to test geographical knowledge, showed that

adults ages 18-24 scored low.

"The purpose of the exhibit is to make aware the importance of geography," said Miksic.

The exhibit offers interactive stations that explore geographical topics such as the forces of nature, the water cycle, population and more.

For more information about this exhibit and others, call the museum at 648-5780.



Photo by Alicia Archuleta

## Find a romance in Siam

By Joshua Meade  
movie critic

Anna and the King is a richly textured film full of brilliant color and passionate scenery.

Based on *Roger and Hammerstein's "The King and I"*, the film brings to life a truly romantic, yet tragic story.

The opening scenes from the film are in Bangkok Thailand where Anna, a teacher from England, is traveling with her son and two servants, to work for the king of Siam.

After weeks of waiting, Anna finally arrives at the palace and the magical feeling of the movie begins.

Anna hastily tries to adapt to a culture and people so different from

her homeland. She finds herself in a world where she has little control, resulting in a frenzy of folly for Anna.

She tries desperately at first to seek the attention of the King, and when doing so, she actually realizes that he is more pleasant than she originally had thought.

The film ends in a most dignified manner, but to know that you must of course see it.

The movie scored high in its ability to portray the city of Siam as a mystical place full of wonder and amazement.

Though Jodie Foster, as Anna, could have used a speech therapist to help perfect the British accent.

Despite this minor imperfection, the film kept the audience delighted.

Chow Yun Fat, as the King, was the first Asian actor to be offered a roll as the King in the history of the story.

And, despite some minor difficulties with understanding his English, Chow Yun Fat performed brilliantly.

If you are looking for a film to enlighten the soul and warm the heart, this is your movie.

Anna and the King is arguably one of the best films I have seen since *Forrest Gump*.

Full of passion, romance, and powerful scenery, it is definitely a must see film.



Photo by Roxy Public Relations  
Jason Kae and Annmarie Sanders star in *The Glass Menagerie* at the Roxy.

By Roshun Radford  
features editor

New members of the Theta Beta chapter of Kappa Alpha Psi Fraternity bring in the new millennium with a goal to achieve.

On Jan. 15, the chapter held a banquet observing their founder's day. Along with celebrating 89 years of existence, the guys presented a plaque to Jacqueline Wade, director of APSU's African American Culture Center for her achievement in education.

The banquet's theme was "Achievement: Gateway to the Next Millennium", and Howard L. Tutman Jr., the fraternity's Grand polemarch, was the keynote speaker for the event.

"Our fundamental purpose is Achievement," said Randall Madison, the chapter's advisor.

"That's what we see out in our young men."

Madison also stressed education and says part of education is achieving a degree.

The chapter recently held a clothing drive on Jan. 21-Jan. 31. Clothing collected from the clothing drive will be handed over to the Salvation Army.

"I also try to make sure they participate in community activities," said Madison.

### Photographic Services

#### APSU 10% Discount

(special sale items excluded)

For the best in studio or location portraits

Specialty-----Fraternity and Sorority Packages-----Specialty

Photo Students! See our other ad in this issue

811 South Riverside Dr. (931) 552-2771

"For All Your Photographic Needs"

#### General Campus Job Advertisement

Job Title: Clerk Typist

Office: Political Science

Approximate number of hours per week: 10

Qualifications: Ability to type 30 wpm, familiar with APSU offices, computer literate, and ability to get along with faculty and students.

Duties and Responsibilities: Receptionist /typist duties, answering switch board, getting and distributing mail, miscellaneous duties as assigned.

#### General Campus Job Advertisement

Job Title: Student Assistants

Office: Disability Services/Vocational Rehabilitation

Approximate number of hours per week: 3-20

Qualifications: Must be reliable and dependable. Have good communication and writing skills.

Duties and Responsibilities: Able to work independently with students with disabilities.

#### General Campus Job Advertisement

Job Title: Assistant Student Work

Office: Environmental Health & Safety

Approximate number of hours: 15-20

Qualifications: Knowledge and experience with computers. Word; Wordperfect 6.1 and 8; good oral skills; filing and organizational skills; be able to lift up to 25 lbs. and carry weighted objects; able to work well with others; good phone skills. Safety/Environmental experience a plus.

Duties and Responsibilities: Filing chemicals inventories for all chemical or campus and inventory/replacement of fire extinguishers; other jobs as assigned.

### SUNSEEKERS TANNING SPA

10 Sessions for \$30.00

or

1 month unlimited for \$40.00

Mon-Fri 8-8, Sat 8-5

123 Riverside Dr. 645-7199

#### General Campus Job Advertisement

Job Title: Technical Clerk Assistant

Office: Physical Plant

Terms: Spring/KSummer/Fall 2000

Approximate number of hours: 20

Qualifications: Course work and/or experience using CAD is required. Excellent organizational skills and ability to cooperate, work well and get along with others.

Duties and Responsibility: Perform CAD work as directed. Filing, answer phones, running errands and other work as assigned.



Hiatt's Florist

FLOWERS FOR ALL OCCASIONS

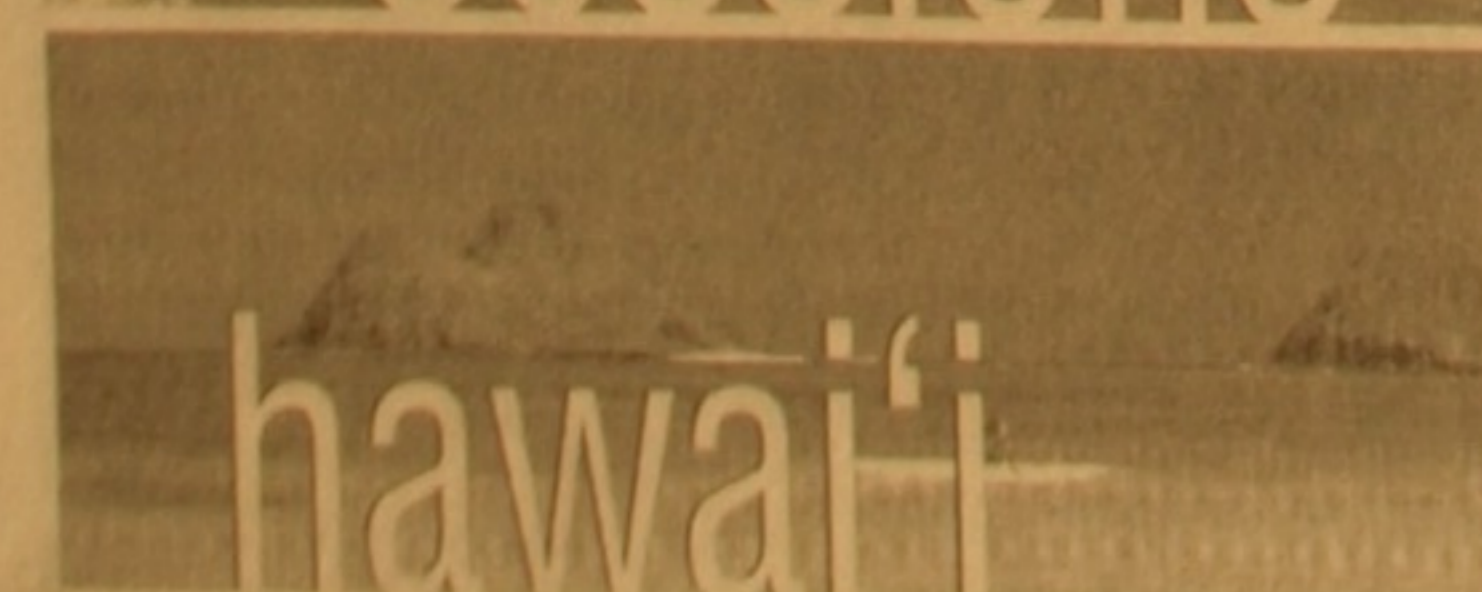
438 FRANKLIN STREET

CLARKSVILLE, TENN.

10% discount on carry-outs with APSU I.D.

DICKIE RYE

RANDY HARRISON



6 weeks, 6 credits, as low as \$2,700 (based on typical costs of tuition, room & board, books, and airfare)

Term 1: May 24-July 2 • Term 2: July 6-August 13

www.outreach.hawaii.edu • toll-free 1 (800) 862-6628

University of Hawai'i at Mānoa, Summer Sessions

# SPORTS

Austin Peay State University

February 9, 2000



## Govs pay price for impressive victory

By John Rone  
assistant ad manager

While avenging a mid-season loss to Southeastern Missouri State with a thrilling overtime win Saturday, APSU men's basketball team may have lost star forward Trenton Hassell for an uncertain number of games.

The Ohio Valley Conference leading Indians came into the Dunn Center looking to improve their conference lead and prove the final score of 62-60 in a win over the Govs a month ago was misleading.

They were unable to do so as they fell to Austin Peay 67-64 after two overtime periods.

Forward Trenton Hassell scored a game-high 21 points in the first meeting this season but, suffering an ankle sprain after only ten minutes of action allowed him just 2 points on 1-of-4 shooting. Hassell's sprain has been called "moderate" by team

trainers.

With their star out, the rest of the Govs meet the challenge of beating the Indians head on.

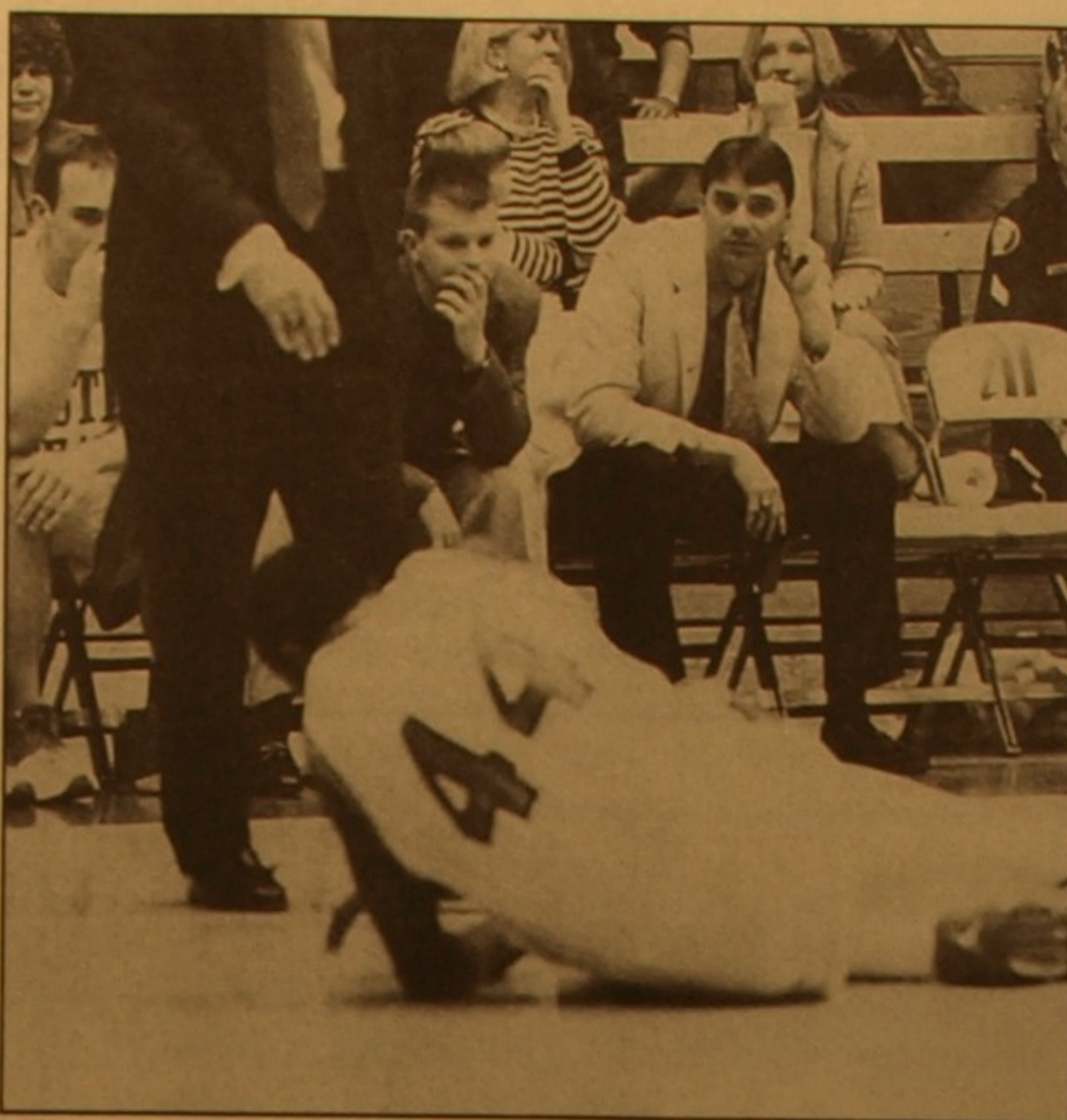
Guard Nick Stapleton who averages 29.1 minutes per game and 14.4 points per game picked up most of the slack.

He raised his scoring by double digits, while playing 15 minutes more than his season average.

Stapleton finished with 26 points in 43 minutes.

The victory improved the Govs OVC record to .500 at 6-6.

Conference supremacy is still obtainable for Austin Peay but will be more of a challenge without Hassell. He entered the game as the OVC's top assists man giving up 5.5 assists per game while also being both the teams leading scorer with 19.4 ppg, and rebounder at 7.6 rebounds per game.



(left) Governor Trenton Hassell suffers injury and has to quit the game. (right) Governor Nick Stapleton jumps to score a field goal against the Indians.



photo by Tammy Sparks

## Volleyball team recruits new player

Austin Peay State University's volleyball program signed its first recruit for the 2000 season when it signed senior Amy Walk of Neoga (Ill.) High School.

Walk, a 5-11, middle blocker, recorded a school-record 1,302 kills and 1,000 digs while at Neoga.

She was named first-team all-conference and to the Effingham Daily News all-area team. The Decatur Herald & Review named her its 1999 Player of the Year.

"Amy is a good fit for us," said head volleyball coach Cheryl Holt.

"She's filling Kim Smith's spot on the roster next year. Amy is a really good all-around player who has the complete package. She's not a real powerful hitter but is a smart player who knows where to place the ball."

Last fall, Walk recorded 408 kills for Neoga, which compiled a 33-3 record en route to a regional championship.

She also recorded 334 digs

and 46.0 blocks.

"Amy is one of the better backcourt players we've seen this year," said Holt.

"We needed her height and size and a go-to person. I believe she will develop into a great player here at Austin Peay."

Academically, Walk is a member of the National Honor Society and will be seeking a degree in mass communications at Austin Peay.

## Lady Govs win big

Brooke Armistead scored 25 and Kelly Chavez recorded a school-high 13 assists as the Austin Peay women's basketball team recorded a 95-71 victory Saturday night. The victory improves the Lady Govs to 11-10 overall and 7-5 in the conference.

The Lady Govs took a 43-30 into the lockerroom at the half but a 15-2 run at the start of the second ended any chances that Southeast Missouri could make a comeback.

Austin Peay is now in a two-way tie for third-place in the OVC with Middle Tennessee. The Lady Raiders also defeated Morehead State, 80-74, Saturday.



photo by Tammy Sparks  
Lady Gov Tanesha Murray shoots over Southeast Missouri defender resulting in a 96-71 victory at the Dunn Center.

### Whatcha Think ?

#### STUDENTS:

Tell us what you think about the following issues!

#### Student Issues:

1. Tired of sloshing through the mud?  
(We want to help you!)

#### Senators on the job:

- Nick Ernsberger - NE3390@apsu.edu
- Shiri Curd - JSK9013@apsu.edu
- Darcel Berry - Dberry2304@aol.com

2. Weight room inadequate?

What should we do?  
What about requesting new equipment or asking for time in the Athletic Weight room?

- Melissa Wildes - Wild\_Marvin@hotmail.com
- Amanda Hysmith - Sunshine07@mailcity.com

3. Are you pleased with the current APSC email system, or do you feel an upgrade is needed?  
Do you use another Internet service provider?

- Patrick Malotte - PMM8647@apsu.edu
- Jennifer Evans - JMF8337@apsu.edu

4. Would you like new bleachers for Intramural sports?  
(Outside and inside) - let us know something!

- Jeff Osgood - JeffOsgood@aol.com

5. Color Printers on campus? - we have them!  
There are 5 color printers in the Writing lab  
On the second floor in Harned Hall

- John Howard - Jaydee0839@yahoo.com

6. Do you like Spring Break at the first of March?  
Would you like it to be later  
- say the 3<sup>rd</sup> week of March?  
Email us now - today -  
before the CALENDAR IS SET!

- Travis Hamilton - MedHiker@aol.com

7. We are working on a microwave for the Clement lounge

- Heather Barger - RCJCB@hotmail.com
- Landon Tate - HeyltsLandon@cs.com

8. What do you think about the Student Directory?

- Heather Barger - RCJCB@hotmail.com
- April Smith-Moore - Asmith80@yahoo.com

**\*\*please email your thoughts & opinions on the above issues to the respective senators that are working on the cases or call the SGA\*\***

Student Government Association: 221-7262; sga@apsu.edu

cover your butt.  
better yet, help cover your  
**[tuition]**

College can mean maneuvering through a lot of different obstacles, but tuition payments shouldn't be one of them. In Army ROTC, you'll have a shot at a scholarship worth thousands. And make friends you can count on. Talk to an Army ROTC advisor today. We've got you covered.



**ARMY ROTC** Unlike any other college course you can take.

FOR DETAILS, VISIT THE ROTC ARMORY OR CALL 221-6149

# OPINION

Austin Peay State University

February 9, 2000



THE  
ALL  
STATE  
T  
A  
F  
F

Astrid D. Eberstein  
editor in chief

Holli Froemming  
news editor

Roshun Radford  
features editor

Tiffanie Cohoon  
assistant features  
editor

Joshua Meade  
restaurant/movie critic

Jerome Parchman  
special projects reporter

Alicia Archuleta  
opinion editor  
assistant photo editor

Tammy Sparks  
photo editor

Lisa Martin  
photographer

Tracy Wood  
copy editor

Shauna Dominicus  
advertising manager

John Rone  
assistant advertising  
manager

Mat LaVigne  
assistant opinion editor

Chip Boles  
cartoonist

ALL STATE ADVISER:  
David Ross

Student Assistant Adviser:  
Johnny Sparks

ON CAMPUS LOCATION:  
610 Drane Street  
Clarksville TN 37044

CAMPUS MAILING ADDRESS:  
P.O. Box 8334  
Clarksville TN 37044

E-MAIL:  
theallstate@apsu.edu

MAIN OFFICE:  
P: 931.221.7376  
F: 931.221.7377

PUBLICATION SCHEDULE:  
The All State is published  
every Wednesday of the aca-  
demic year, except during the  
final exams and holidays.

LETTERS TO THE EDITOR  
should be saved to a floppy  
or zip as an RTF (Rich Text  
File). The file should include  
the author's full name, signa-  
ture, address, and phone  
number (plus major and class  
if applicable). They will be  
checked for authenticity.  
Letters should be received no  
later than 4 p.m. on Wed-  
nesday of each week to be  
considered for publication.

Alicia Archuleta  
Opinion editor

At Austin Peay we have  
many fine sports teams.  
However, we do not have  
many fine fans.

I would like to inform peo-  
ple that there are more sports  
at Austin Peay than intramu-  
rals. We have football, men's  
and ladies basketball, softball,  
tennis, track and field and  
cross country.

I have been to two women's

basketball games. There are  
maybe thirty people there  
because they want to be. This  
has to be very discouraging  
for these athletes who work  
hard to win honor for our  
school.

This apathy is not limited to  
athletics. We also have fine  
vocal groups, bands, artists,  
and actors at this university.

In Trahern every semester  
there are two main stage pro-  
ductions and other produc-

tions such as, the New Play  
Festival, coming in the next  
few weeks, and Obscenes.

The theatre students build  
the sets, make the costumes,  
run the boards and act in all of  
these productions. They  
spend more time preparing  
for a show than they do actu-  
ally performing. Yet, very  
rarely do they play to a full  
house.

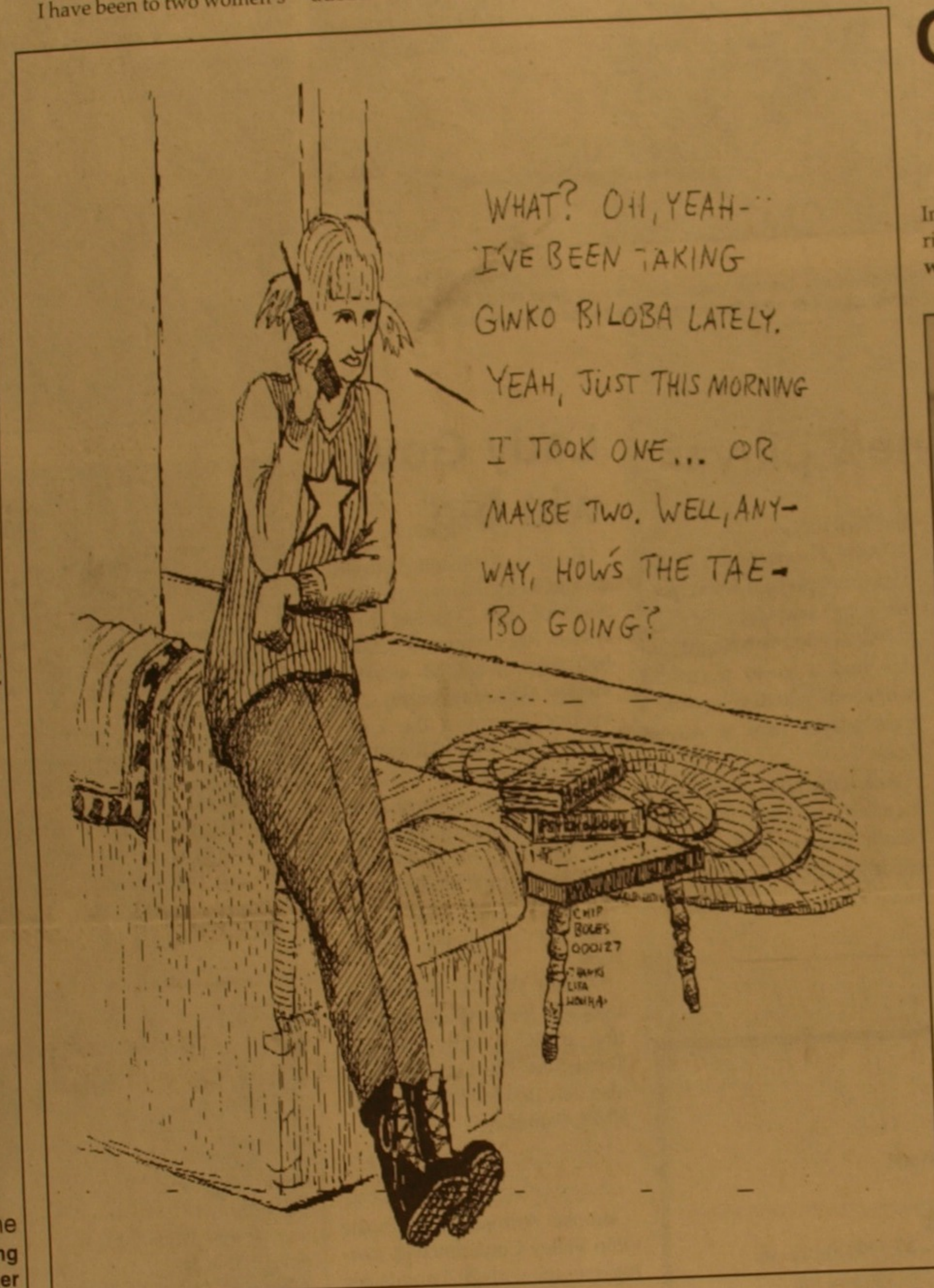
Empty houses are also a  
problem for the music stu-

dents in groups like Voices of  
Triumph and the various  
instrumental ensembles.  
They have so much talent to  
share but don't get to because  
students will not go unless  
they get some kind of extra  
credit for attending.

Austin Peay's art depart-  
ment has some of the most tal-  
ented students in the state.  
Few students go to the open-  
ings because maybe they feel  
they don't understand art.

The students that do go often  
do so because of the food or  
they know the artist.

Austin Peay offers some  
great opportunities for stu-  
dents to support their peers  
and expand their minds. I  
think most students are afraid  
if they attend anything but  
parties. Believe it or not that  
is why many students come  
to Austin Peay.



## Where's the party tonight?

By Alicia Archuleta  
opinion editor

For being a college town  
Clarksville really does not  
offer much in the form of  
nightlife.

We have an abundance of  
bars, restaurants and Wal-  
Marts, but very few places to  
go dance or do anything  
besides eat and drink.

Still since there is  
only one place that you can go  
dance any night you choose,  
downtown leaves a lot to be  
desired.

Franklin Street tried to for-  
mulate it self after Second  
avenue in Nashville some-  
what successfully.

Except for the fact there is  
nothing to draw people to

downtown Clarksville.  
Especially since the tornado.

On top of that, Franklin  
street is not the easiest place  
to get to or find parking on.

On a busy night the bank  
parking lot on town square is  
full of cars parking illegally.

There are some places out  
of the downtown area but  
they have more GIs in them  
than college students.

One thing I have learned  
from going out in town is that  
GIs and college guys do not  
usually mix.

Clarksville businesses are  
losing money because stu-  
dents would rather spend  
twenty dollars in gas to go to  
Nashville than stay in  
Clarksville.

Another problem is that  
many of the entertainment  
establishments are "21 and  
over".

For the 18 and 19 year olds  
who's friends are "21 and  
Over" this leaves very few  
places they can go and hang  
out at together.

Many students just stay at  
friends places and do not put  
their money into these estab-  
lishments at all.

IF Austin Peay and  
Clarksville want to grow as a  
college town they need to  
work on supplying the  
demand for cheap safe enter-  
tainment. Maybe if they did  
Austin Peay would no longer  
be a suitcase college.

## Have your Voice Heard

Send Letters To The Editor

Please submit letters to the All State P.O. Box 8334. Make sure to have your name, major, phone, signature and classification on all letters submitted for publication. Letters may be edited for content and space availability.

Question of the Week for next week:

**Do you think Elian Gonzalez should be sent back to his father in Cuba or be allowed to stay in the United States?**

Please send responses to the All State P.O. Box 8334. Remember to put your Name, classification, major, and phone number on all responses. We will contact you to get your picture to place next to your quote. Responses must be recieved by the Friday after the question is posted.

## Question of the week

In honor of the one year anniversary of the tornado that  
ripped through APSU. We asked students, "Where were you  
when the tornado hit and how did it affect your life?"



Scott Starley  
Sophomore  
Chemistry

"I was asleep at home. I  
woke up to news reports that  
Austin Peay was hit. My best  
friend was on campus staying  
with her sister in Emerald  
Hill. I have never been so  
worried in my life. Then I  
thought 'The campus is dead'.  
Being on SGA allowed me to  
be one of the first students  
back on campus to see the  
damage. It was horrible."



Regan Hill  
Senior  
Pre-Med.

"I was awake at home. The  
cable and electricity went out.  
I called a friend who still had  
cable and electric who told me  
about the tornado. When  
school got back in we had to  
clean glass out of the labs in  
McCord from all the busted  
windows. We also could not  
complete our experiments be-  
cause the specimens were  
ruined."



Shedrich Webster  
Senior  
Interdisciplinary  
Studies

"I was asleep and one of my  
RAs called me. Because I am  
an RHD I had to make sure  
the residents were calm and  
safe. I ended up with eight  
people in my bathroom in  
Meacham."



photos by Alicia Archuleta

"I was at work when the  
tornado hit. The lights went  
blinking on and off, which  
was really weird because I  
was really weird because I  
work for the electric company.  
It took me almost an hour to  
get to campus from work  
because of all the road blocks  
and debris on the streets, but I  
finally made it by taking sev-  
eral back roads. My family  
and I were very lucky because  
we were not without lights for  
a long period of time."

David Chapman  
Junior  
Psychology

We need to take advantage  
the opportunity before us.  
Best of all these programs  
almost always free

**THE ALL STATE  
EXPAND YOUR COLLEGE  
EXPERIENCE  
AND HELP SHAPE  
THE FACE OF APSU  
WE WANT YOU TO BE A  
PART OF OUR TEAM**

**WE'RE LOOKING FOR:**

**Assistant News Editor  
Sports Editor**

**Staff Writers  
Graphic Designers**

**Or, Anyone with skills who can contribute to  
YOUR university newspaper**

Some scholarships available or you can earn credit hours.

**FOR MORE INFORMATION**  
**Fill out an application at Student**  
**Affairs in Ellington, room 202 or**  
**call the All State at 221-7376.**