

Standing Committee Annual Report

Name of Committee or Council: Committee for Persons with Disabilities

Chair: Shirley Hagewood

Meeting Dates in Current Year: 9/19/07, 10/25/07, 11/15/07, 12/04/07, 2/28/08, 3/31/08, 4/11/08, 4/17/08

Major Actions or Accomplishments:

The members of the Committee for Persons with Disabilities (CPD) spent many hours in meetings gathering data on the status of the 1995 ADA Survey for the State of Tennessee conducted by Law Engineering, Inc. Thus, our committee requested that Mr. Manny Ballen, Interim Director of the Physical Plant, provide our members with the most recent update (Fall 2007) on the 1995 APSU campus review, including reports on our newer campus buildings not noted in the 1995 report, furnish us information on projects that have been completed or an in-progress report, provide an updated budget expenditure list for 2007-2008 and furnish a TBR list with target dates of completion to move APSU in full ADA compliance. I have attached the reports that Mr. Manny Ballen furnished.

We also dealt with the construction of sidewalk repairs scheduled for early December 2007. We asked the Physical Plant to wait to begin construction after classes ended on December 14, 2007. This request was not received in a positive manner. However, after much debate about the noise factor and disruption during final exams, Mr. Ballen did agree to wait to begin repairs during fall break approximately the middle of December, 2007. We appreciate the fact that he and the members of the Physical Plant waited to begin construction.

Several member of our committee conducted a walking tour of the APSU campus to observe handicap entrance/exit access, ramps, wheel chair lifts and elevators, sidewalk conditions and other critical disability issues. A slide presentation was given in the April 17, 2008 meeting using pictures taken from that tour. We learned numerous important facts as we toured the campus. We realized that some of the exits, ramps and walkways were obstructed with furniture, wastebaskets, and other obstacles that prevented easy access for disabled persons accessing a campus building. This leads us to propose item number 2 given below.

A list of the priorities, **APSU ADA Priority List 2007-08**, proposed by Committee for Persons with Disabilities 2007-2008 has been sent to Dr. Mitch Robinson, Vice President of Finance and Administration. It is attached.

We wish to give a special thanks to Beulah Oldham, Director of the Office of Disability Services, and her staff for presenting four outstanding events during **Disabilities Awareness Month** honoring our disabled persons on campus. Members present for the 'Kick-Off Celebration' held Monday, March 31 were Sheila Bryant, Shirley Hagewood, Kay Haralson, Danielle White, Beulah Oldham and Lynette Taylor. Also, I wish to thank President Tim Hall for his participation in the "Wheelchair, Blind, and Crutches(WBC) Challenge" held Wednesday, April 16 from Noon-2:00 pm. His performance was excellent especially in light of some knee issues. We encourage all administrators, faculty, staff and students to become involved in this important campus event.

I wish to thank all members of the Committee for Persons with Disabilities who helped formulate ideas to help APSU become a safer environment for our persons with disabilities. I would like to send a special thanks to Dr. Jim Thompson and Mr. Joe Mills who were so very instrumental in helping tirelessly research documentation from past records, formulating proposals, photography, campus tour and other very important duties assigned to the CPD.

The Committee for Persons with Disabilities would like to recommend to President Tim Hall the following items as 2007-2008 CPD completes its assignment:

1. Dr. Baker, who volunteered for the position in the April 17, 2008 meeting, be appointed chair of the Committee for Persons with Disabilities (CPD) for the next academic year, 2008-2009. Further, note that for the sake of continuity, Dr. Jim Thompson and other faculty and staff presently assigned to the committee be asked to continue serving on the CPD next year.
2. Secondly, we recommend that university policies be established to encourage awareness of both ADA compliance issues and convenience issues, above and beyond mere ADA compliance, within the university community in order that persons with disabilities who visit, attend or are employed by APSU will perceive that APSU has a genuine commitment to making the APSU campus respectful and user-friendly with regard to access, convenience, and safety in regard to ADA concerns. This would include methods to assure that staff are competent and available to operate elevators and chair lifts, that inclined walkways which lead to doors will lead to doors which can be readily opened or that provide call boxes for assistance with opening, that appropriate signage be put in place to direct persons with disabilities to safe and convenient routes around the campus and within buildings, that building coordinators be trained and be identified to the public for access, that doorways and other access points associated with ramps, lifts, elevators, etc., be intentionally kept clear of obstacles such as furniture, plant urns, wastebaskets, etc. This policy and implementation will also require the assigning of responsibilities to various units within the university to provide continual quality assurance in regard to these matters. These matters cannot be left in the hands of the CPD as CPD members have no authority, nor the time to carry out ongoing inspections for compliance in such matters.
3. The third recommendation is that the President establishes a physical repository for the annual paperwork generated by the CPD, such repository to be permanent and easily accessible to CPD members, APSU administrators, and all interested parties including the public. It is important that the history and recommendations and the implementations, when made, based on those recommendations be available in order to document good faith efforts on the part of the university, with the advisement of the CPD, to move the university in the direction of full compliance with ADA requirements as time and resources permit.

Sincerely,

Shirley Hagewood, Chair
Committee for Persons with Disabilities
Clement 104
E-Mail: hagewoods@apsu.edu
Phone: 931-221-7813
Fax: 931-221-6354 (Math Dept.)

**ADA Committee Proposal for funds
Ellington Student Services Building
Spring 2008**

Scope of proposal:

1. Make the main entrance to Ellington accessible for disabled students.

Proposal Details: (see pictures for more detail).

Picture A and D

The ADA committee proposes two (2) new concrete ramps be installed from the main sidewalk to the front doors of Ellington.

You will notice in Pictures B and C that currently the entrance does not lend itself to access with a wheelchair.

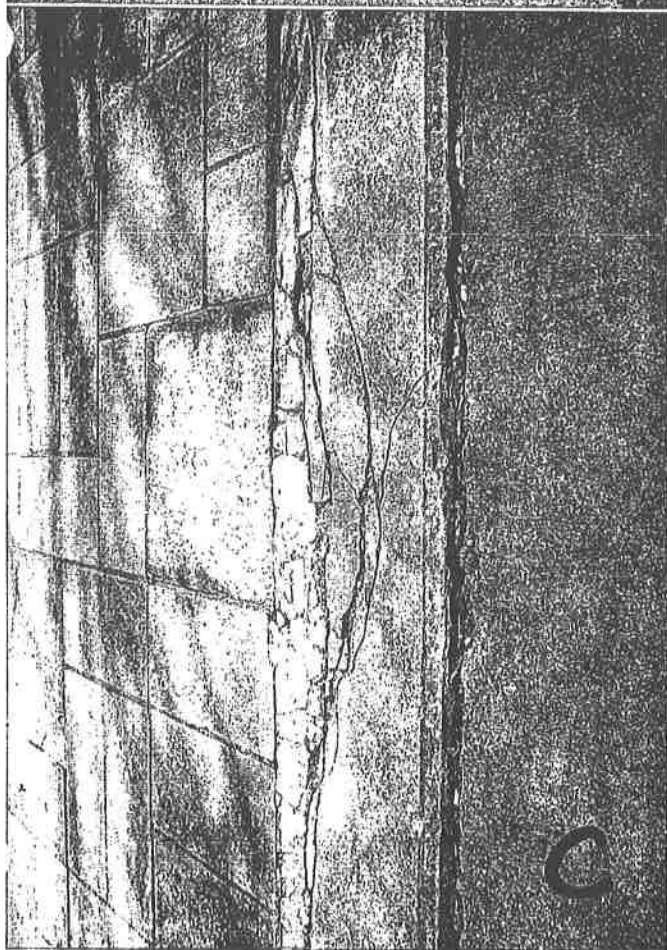
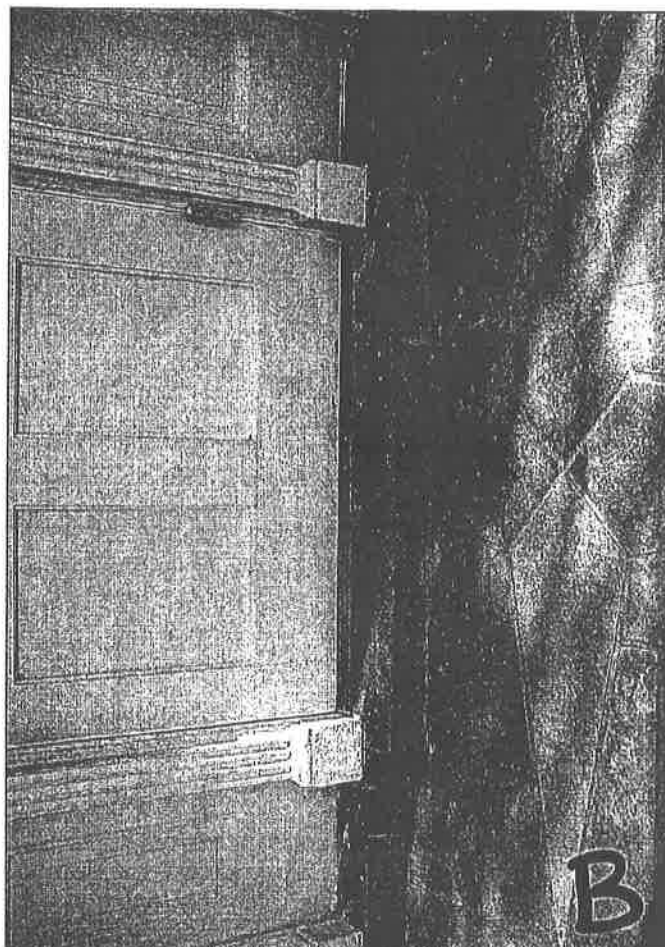
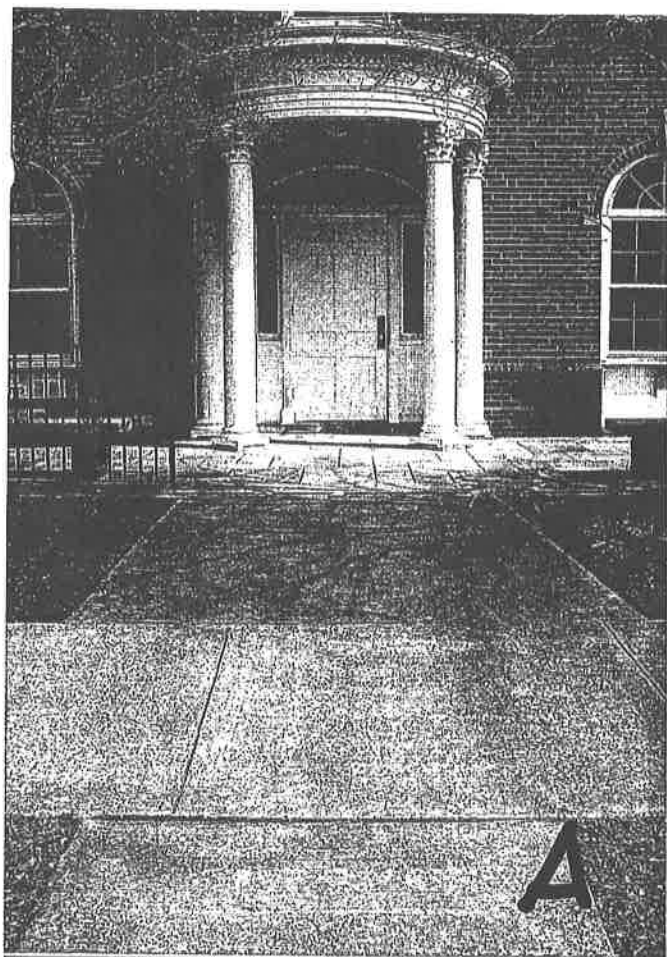
Picture D

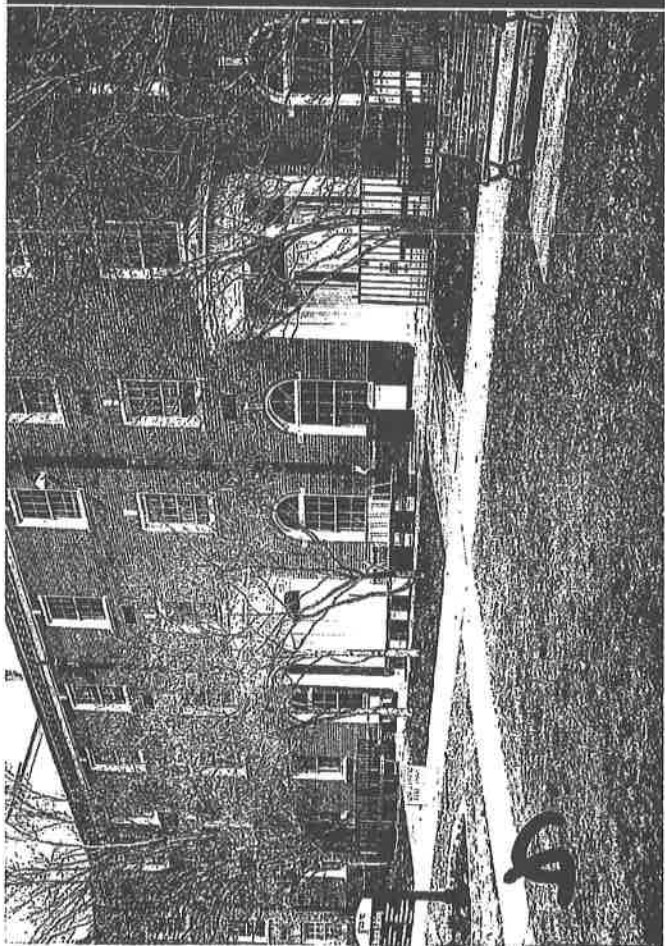
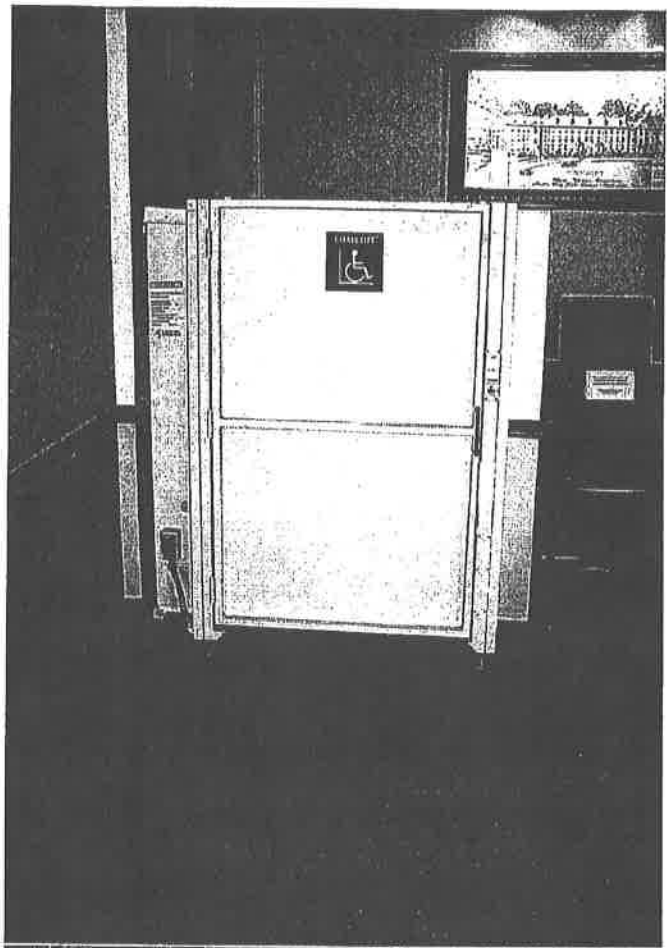
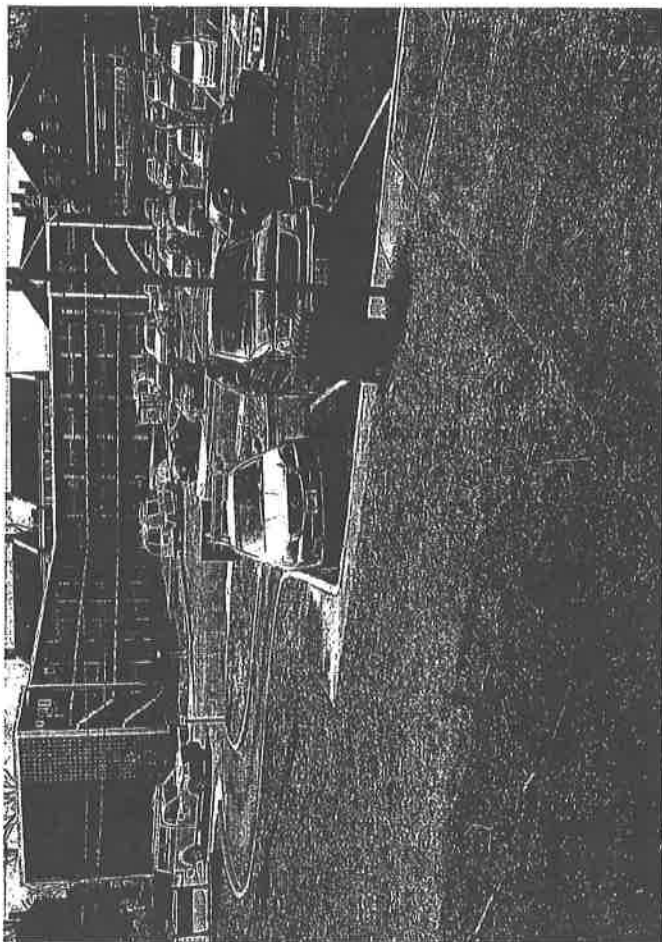
The committee also proposes that the left entrance to Ellington be considered another entrance. The mechanical ramp inside the lobby (picture E) is directly inside this door and will allow an easy transition from the door to the ramp to the main hallway.

Picture F

The committee also proposes that the current ADA spots be moved from current location on the north end of Ellington lot to the south end of Ellington lot. Currently there are no curb cuts in the Ellington parking lot and moving the spots to the southend can create space for a cutout and ramp to the main sidewalk.

Total proposal includes installation of two (2) ramps into front entrance of Ellington, movement of current ADA parking and creating a curb cut and ramp from parking lot.





On-campus Communication

MEMORANDUM

To: Ms. Shirley Hagewood, Chair
Committee for Pearson with Disabilities

From: Manny Ballen – Acting Director
Physical Plant

Subject: Committee Report

Date: April, 2008

I am happy to report that we continue making improvements to meet ADA compliance issues campus wide. I am providing an update on this information for all committee members. The improvements completed in the past are from one thru eight.

Expenditures for the past five (5) years:

1. Ellington-Memorial Health Ramps and Ellington – Interior Adaptations	\$57,268.00
2. Browning, Trahern, Clement and Ellington Wheelchair Lifts	\$64,422.00
3. Sundquist Science Building (SSC) – ADA Parking Lot and Wheelchair Ramps at Sidewalks	\$64,300.00
4. Installation of thirteen (13) Power Assist Door Operators in the SSC, the Kimbrough Building and the University Center.	\$38,000.00
5. Ellington Bathroom Renovation Project – (not ADA money)	\$565,470.00
6. Dunn Center Hand Rails (2007)	\$24,000.00
7. Trahern Bathroom on top floor - ADA (2007)	\$64,775.00
8. Dunn Center Bathrooms – (not ADA money - 2006/07)	\$286,650.00

According to TBR, from 2002 to this date, there has been \$270,158.00 spent on ADA requirements.

Update:

The following new or renovated buildings meet all ADA compliance code/regulations:
Science Building, Foy Recreation Center and McCord.

1. Building has the appropriate amount of handicap entry/exits door according to architectural design..
2. All bathrooms have correct entry door hardware.
3. Bathroom stalls meet ADA compliance.

4. Entrances to lecture halls on all three floors in the Atrium have correct electrical devices, and openings into lecture room meet required dimensions.
5. Water fountains on all three floors meet the correct height.

Ms. Shirley Hagewood

April , 2008

Page 2

Also attached, is a copy of the complete list of all deficiencies noted during a campus survey by Law Engineering, Inc., conducted on March 28, 1995. The attached shows what was previously accomplished, and what has been completed within the last two years.

It is my understanding that approximately \$200,000 is available to address outstanding issues identified in the Law Engineering report. A high priority project is the installation of an elevator in the Browning Building. Currently mobility impaired individuals have no access to the third floor and difficult access to others. My recommendation to you and the committee is that we use these funds for an elevator for Browning.

Violette Architects has been commissioned by TBR to design ADA requirements for student housing.

I would be happy to answer any questions that you or the committee has.

attachment

c: Mr. Mitch Robinson
Mr. Richard Jackson

- a. ADA curb cut-ins on the following streets: Summer, Marion and Drain performed by the City of Clarksville last summer.
- b. Ellington Hall – bathroom renovation on all three floors and water foundations replaced.
- c. Trahern – installation of new ADA bathrooms.
- d. UC ADA entrances doors to cafeteria.
- e. Dunn Center – Installation of ADA bathrooms.
- f. 322 & 400 Ford Street – ADA ramps installed.
- g. Marks Building – ADA ramp with railing.
- h. Additional Curb cuts that were completed:
 - 1. Ferris & Summer
 - 2. Foy Parking to Soccer grand stands
 - 3. Summer & Marion
 - 4. Henry & Marion
 - 5. Burt parking Lot
 - 6. Hannum & Henry
 - 7. Hannum & Summer
- i. Ellington – main entrance modified, elevator controls modified for ADA,

Improvement for 08

- a. Memorial Health
- b. McReynolds

LIST OF ALL FACILITIES ON SITE
Law Engineering Inc.
AUSTIN PEAY STATE UNIVERSITY
CLARKSVILLE, TENNESSEE
1995

Building Name

1. 219 Castle Heights

- ~~a. Refine accessible parking and install sign~~
- ~~b. Construct accessible pathway~~
- c. Install ramp
- d. Replace/add handrail
- e. Modify entrance platform and door hardware
- ~~f. Modify doorways~~
- g. Construct new toilet room

~~2. 227 Castle Heights~~

~~3. 228 Castle Heights—Demolished~~

~~4. 302 Castle Heights—Demolished~~

~~5. Archwood—Renovated and the Code Compliance Issues have been completed~~

- ~~a. Redefine parking~~
- ~~b. Install new ramp~~
- ~~c. Modify ramp at entrance and enlarge doorway~~
- ~~d. Modify doors, controls, alarms and hardware~~
- ~~e. Modify handrails~~
- ~~f. Provide accessible toilet room on each floor~~
- ~~g. Lower counter top~~

6. Blount Hall

- a. Modify handrails at steps
- b. Install new ramp
- c. Replace ~~opening hardware and~~ threshold
- d. Install signage
- e. Build wing walls
- ~~f. Replace drinking fountains~~
- g. Modify stair handrails
- h. Construct accessible bathrooms
- i. Provide accessible cabinets, counters and appliances in kitchen
- j. Lower clothes rods

7. Browning Administration

- ~~a. Redefine accessible parking—Completed~~
- ~~b. Rebuild/modify entrance ramps/steps—Completed~~

- c. Replace doors
- d. Enlarge platforms
- e. Install new elevator
- ~~f. Replace doors/hardware~~
- ~~g. Modify fountains~~
- ~~h. Add/replace ramps~~
- i. Replace railings
- j. Modify fixtures and accessories in existing toilet rooms and toilet room in basement
- k. Make cashiers counter accessible

~~8. CEH Cafeteria—The cafeteria has been moved to the new University Center and the New Bookstore project has been completed. All complaint issues have been addressed.~~

- ~~a. Widen entrance door to office and add signage~~
- ~~b. Modify fixtures and accessories in toilet rooms~~
- ~~c. Redefine parking~~
- ~~d. Rebuild patch section~~
- ~~e. Replace ramp handrails~~
- ~~f. Install sign~~

9. Claxton Building

- ~~a. Redefine parking~~
- ~~b. Rebuild sloping pathway~~
- c. Install ramp
- ~~d. Replace door at lecture hall entrance~~
- ~~e. Install signage~~
- ~~f. Modify elevator controls and signals~~
- g. Modify doors, fountains, controls and signage
- h. Replace handrails
- i. Rebuild ramp
- j. Modify toilet room doors/fixtures/accessories
- k. Install listening system in lecture hall

~~10. Clement Fine Arts—Renovated in 1999—All compliant issues have been addressed~~

- ~~a. Define parking access aisles~~
- ~~b. Build curb ramps~~
- ~~c. Rebuild ramp~~
- ~~d. Enlarge platform~~
- ~~e. Replace door~~
- ~~f. Install signs at non-accessible entrances~~
- ~~g. Modify elevator controls/signals/accessories~~
- ~~h. Modify doors/signs/controls/fountains~~
- ~~i. Modify stair handrails~~
- ~~j. Rebuild ramp~~
- ~~k. Modify toilet room doors/stalls/fixtures and accessories~~
- ~~l. Modify seating~~
- ~~m. Add listening system in auditorium~~

11. Cross Hall – *Planned for demolition*

- ~~a. Define parking~~
- ~~b. Construct curbcut/ramp~~
- ~~c. Modify ramps~~
- ~~d. Enlarge platforms~~
- ~~e. Enlarge door openings~~
- ~~f. Replace stair handrails~~
- ~~g. Provide accessible toilet, bathing, laundry, and kitchen facilities~~
- ~~h. Make clothes rods accessible~~

~~12. Dunn Center~~

- ~~a. Site accessibility~~
- ~~b. Entrance accessibility~~
- ~~c. Building accessibility~~
- ~~d. Spaces accessibility~~

~~13. E.H. Alumni Center—Renovated in 2001—All compliance issues have been completed~~

- ~~a. Build accessible parking~~
- ~~b. Build pathway to side entrance~~
- ~~c. Install ramps~~
- ~~d. Modify steps and handrails~~
- ~~e. Modify door hardware and threshold~~
- ~~f. Modify signage/stair handrails~~
- ~~g. Construct accessible toilet room~~

14. Ellington Hall

- ~~a. Redefine parking~~
- b. Rebuild ramp
- c. Modify step handrails
- d. Replace doors/hardware/thresholds
- e. Modify elevator controls and accessories
- f. Modify doors
- g. Replace handrails
- ~~h. Modify toilet room doors/fixtures and accessories~~

15. Emerald Hills 1 *through 12*

- ~~a. Provide accessible parking~~
- ~~b. Install curbcuts~~
- c. Enlarge platforms at doors
- d. Modify hardware/thresholds
- e. Enlarge door
- f. Replace stair handrails
- g. Provide accessible restrooms/kitchens and closets in accessible units
- h. Make office/laundry facilities accessible

~~16. Emerald Hills 2~~

- ~~a. Provide accessible parking~~
- ~~b. Install curbeuts~~
- ~~c. Enlarge platforms at doors~~
- ~~d. Modify hardware/thresholds~~
- ~~e. Enlarge door~~
- ~~f. Replace stair handrails~~
- ~~g. Provide accessible restrooms/kitchens and closets in accessible units~~
- ~~h. Make office/laundry facilities accessible~~

~~17. Emerald Hills 3~~

- ~~a. Provide accessible parking~~
- ~~b. Install curbeuts~~
- ~~c. Enlarge platforms at doors~~
- ~~d. Modify hardware/thresholds~~
- ~~e. Enlarge door~~
- ~~f. Replace stair handrails~~
- ~~g. Provide accessible restrooms/kitchens and closets in accessible units~~
- ~~h. Make office/laundry facilities accessible~~

~~18. Emerald Hills 4~~

- ~~a. Provide accessible parking~~
- ~~b. Install curbeuts~~
- ~~c. Enlarge platforms at doors~~
- ~~d. Modify hardware/thresholds~~
- ~~e. Enlarge door~~
- ~~f. Replace stair handrails~~
- ~~g. Provide accessible restrooms/kitchens and closets in accessible units~~
- ~~h. Make office/laundry facilities accessible~~

~~19. Emerald Hills 5~~

- ~~a. Provide accessible parking~~
- ~~b. Install curbeuts~~
- ~~c. Enlarge platforms at doors~~
- ~~d. Modify hardware/thresholds~~
- ~~e. Enlarge door~~
- ~~f. Replace stair handrails~~
- ~~g. Provide accessible restrooms/kitchens and closets in accessible units~~
- ~~h. Make office/laundry facilities accessible~~

~~20. Emerald Hills 6~~

- ~~a. Provide accessible parking~~
- ~~b. Install curbeuts~~
- ~~c. Enlarge platforms at doors~~
- ~~d. Modify hardware/thresholds~~
- ~~e. Enlarge door~~
- ~~f. Replace stair handrails~~
- ~~g. Provide accessible restrooms/kitchens and closets in accessible units~~
- ~~h. Make office/laundry facilities accessible~~

21. ~~Emerald Hills 7~~

- ~~a. Provide accessible parking~~
- ~~b. Install curbeuts~~
- ~~c. Enlarge platforms at doors~~
- ~~d. Modify hardware/thresholds~~
- ~~e. Enlarge door~~
- ~~f. Replace stair handrails~~
- ~~g. Provide accessible restrooms/kitchens and closets in accessible units~~
- ~~h. Make office/laundry facilities accessible~~

22. ~~Emerald Hills 8~~

- ~~a. Provide accessible parking~~
- ~~b. Install curbeuts~~
- ~~c. Enlarge platforms at doors~~
- ~~d. Modify hardware/thresholds~~
- ~~e. Enlarge door~~
- ~~f. Replace stair handrails~~
- ~~g. Provide accessible restrooms/kitchens and closets in accessible units~~
- ~~h. Make office/laundry facilities accessible~~

23. ~~Emerald Hills 9~~

- ~~a. Provide accessible parking~~
- ~~b. Install curbeuts~~
- ~~c. Enlarge platforms at doors~~
- ~~d. Modify hardware/thresholds~~
- ~~e. Enlarge door~~
- ~~f. Replace stair handrails~~
- ~~g. Provide accessible restrooms/kitchens and closets in accessible units~~
- ~~h. Make office/laundry facilities accessible~~

24. ~~Emerald Hills 10~~

- ~~a. Provide accessible parking~~
- ~~b. Install curbeuts~~
- ~~c. Enlarge platforms at doors~~
- ~~d. Modify hardware/thresholds~~
- ~~e. Enlarge door~~
- ~~f. Replace stair handrails~~
- ~~g. Provide accessible restrooms/kitchens and closets in accessible units~~
- ~~h. Make office/laundry facilities accessible~~

25. ~~Emerald Hills 11~~

- ~~a. Provide accessible parking~~
- ~~b. Install curbeuts~~
- ~~c. Enlarge platforms at doors~~
- ~~d. Modify hardware/thresholds~~
- ~~e. Enlarge door~~
- ~~f. Replace stair handrails~~
- ~~g. Provide accessible restrooms/kitchens and closets in accessible units~~
- ~~h. Make office/laundry facilities accessible~~

~~26. Emerald Hills 12~~

- ~~a. Provide accessible parking~~
- ~~b. Install curbcuts~~
- ~~c. Enlarge platforms at doors~~
- ~~d. Modify hardware/thresholds~~
- ~~e. Enlarge door~~
- ~~f. Replace stair handrails~~
- ~~g. Provide accessible restrooms/kitchens and closets in accessible units~~
- ~~h. Make office/laundry facilities accessible~~

~~27. Greenhouse~~

28. Harned Hall

- ~~a. Redefine parking~~
- ~~b. Install curbcut~~
- c. Install handrails at entrance ramp
- d. Replace double leaf doors
- ~~e. Install signs~~
- f. Replace existing elevator
- g. Replace doors
- h. Widen corridor sections
- i. Modify stairs/handrails
- j. Install 2 new ramps
- k. Modify toilet room fixtures/accessories
- l. Construct new men's toilet on 1st floor

~~29. Harvill Hall~~

~~30. Joe Morgan University Center—Old Facility Demolished~~

31. Killebrew Hall – Planned for demolition

- ~~a. Modify parking/pathways~~
- ~~b. Install handrails and new ramps~~
- ~~c. Enlarge doorways for accessible dorm rooms~~
- ~~d. Modify stair handrails~~
- ~~e. Provide accessible bathrooms~~
- ~~f. Provide accessible dorm rooms/lobby and laundry facility~~

32. Kimbrough

- ~~a. Install signage at parking/entrances~~
- ~~b. Install curbcut~~
- c. Construct new stairs throughout building
- d. Modify elevator controls/signals, accessories
- e. Replace doors/hardware/fountains
- f. Modify controls/signage
- g. Modify toilet room doors/fixtures and accessories
- h. Provide accessible spaces in lecture hall

33. Marks Industrial – *State Approved Renovations*

- a. ~~Resurface and redefine accessible parking~~
- b. ~~Modify pathways~~
- c. ~~Reverse door swing~~
- d. ~~Replace hardware~~
- e. ~~Modify doors/fountains/signage/controls~~
- f. ~~Modify stairs and handrails~~
- g. ~~Construct ramps~~
- h. ~~Modify doors, fixtures and accessories or construct new toilet rooms~~

34. McCord Science – *Renovation In Progress*

- a. ~~Define accessible parking spaces~~
- b. ~~Modify existing ramp~~
- c. ~~Replace doors~~
- d. ~~Modify step handrails~~
- e. ~~Replace existing elevator~~
- f. ~~Modify doors/fountains/signage~~
- g. ~~Modify handrails~~
- h. ~~Install new ramp~~
- i. ~~Modify existing toilet room doors/fixtures and accessories~~

35. McReynolds Hall – *State Approved Renovations*

- a. ~~Widen pathway~~
- b. ~~Modify entrance ramp and doorway~~
- c. ~~Construct new elevator and modify stair handrails~~
- d. ~~Modify doors, fountains, signs, controls~~
- e. ~~Install ramp/ new handrails at corridor steps~~
- f. ~~Modify or replace toilet rooms; enlarge doorways~~

36. Meacham Apartments

- a. Provide accessible stairs
- b. ~~Redefine accessible parking spaces~~, install ramp handrails
- c. Provide accessible entry into lobby and laundry room
- d. Install a front loading washer
- e. Provide accessible apartment toilet room, showers, etc.

37. Memorial Health

- a. ~~Define accessible parking, add curbeuts~~
- b. Replace door, install signage
- c. ~~Enlarge door openings~~
- d. Modify doors, fountain and signage
- e. ~~Provide accessible toilet rooms, showers, rec. room~~

38. Miller Hall

- a. ~~Modify parking and pathways~~
- b. Install railing/new ramp
- c. Provide entrance platform
- d. Modify hardware/threshold
- e. Install elevator
- f. Modify doors
- g. Install handrails/new ramp

- h. Modify toilet room/fixtures/doors and accessories
- i. Provide accessible showers/dorm rooms/laundry room/kitchen

39. Music/Mass Communications

- ~~a. Relocate accessible parking~~
- ~~b. Modify curbeuts~~
- c. Rebuild steps
- d. Modify ramp
- ~~e. Replace door closer~~
- ~~f. Install signage~~
- g. Modify elevator controls/accessories
- h. Modify doors/fountains/signage/controls
- i. Modify stair handrails
- j. Modify toilet room doors/fixtures and accessories
- k. Provide accessible spaces/listening system

~~40. Power House~~

~~41. President's Home—Dunbar Cave Road—Sold~~

42. ~~R.C.~~ Shasteen Building

- ~~a. Redefine accessible parking~~
- ~~b. Install curbcut~~
- ~~c. Replace door closer~~
- d. Install signs at inaccessible entrances
- e. Replace door hardware
- f. Install new drinking fountain
- g. Construct wing wall
- h. Modify existing toilet rooms
- i. Construct new toilet rooms

43. Rawlins Hall – *Planned for Demolition*

- ~~a. Redefine 4 accessible parking spaces and mount signs~~
- ~~b. Improve or add 4 curbcuts to pathways from park to building and building to building~~
- ~~c. Replace door opening hardware~~
- ~~d. Modify threshold~~
- ~~e. Enlarge entrance platform~~
- ~~f. Install a new elevator and shaft outside the building~~
- ~~g. Replace steps at center stairwell for end stairwells~~
- ~~h. Replace handrails~~
- ~~i. Fill in open risers~~

~~44. ROTC Armory—Facility to be Demolished in 2005~~

- ~~a. Define accessible parking~~
- ~~b. Modify curbcuts/pathways~~
- ~~c. Install ramp~~
- ~~d. Install new ramp/new handrails at steps~~
- ~~e. Replace doors~~
- ~~f. Modify doors/fountains/signage~~
- ~~g. Provide accessible toilet/shower facilities~~

45. Sevier Hall

- ~~a. Define accessible parking~~
- b. Install new ramp
- c. Modify handrails
- d. Modify hardware/threshold/signs
- e. Build elevator
- f. Modify doors/fountains/controls/signs
- g. Modify stair handrails
- h. Modify existing toilet room and showers
- i. Provide accessible clothes rods/lobby/laundry room/kitchen

46. Child Learning Center at Sexton

- ~~a. Define accessible parking~~
- ~~b. Construct drop-off~~
- ~~e. Modify curbeuts~~
- d. Replace doors
- e. Modify doors/fountain/controls/signage
- f. Modify toilet room doors/fixtures and accessories
- ~~g. Lower countertop in lobby~~

47. Stadium

- ~~a. Define accessible spaces~~
- ~~b. Install curbcut~~
- ~~e. Replace sites and install new ramps~~
- d. Install wing walls
- e. Provide accessible toilet rooms/spectator seating and ticket windows

48. Tennis Center

- ~~a. Install new sign~~
- ~~b. Install new curbcut~~
- c. Add or enlarge platform
- d. Replace door opening hardware
- e. Replace threshold
- f. Install 2 exterior signs
- g. Replace toilet
- h. Construct new shower

49. Trahern Art-Drama – *Renovations Pending State Approval*

- ~~a. Provide accessible parking and passenger loading zones~~
- ~~b. Repair automatic door opener~~
- ~~c. Replace/remove thresholds~~
- ~~d. Install signs~~
- ~~e. Replace existing elevator~~
- ~~f. Modify doors/fountains/controls/signage~~
- ~~g. Modify/add ramps~~
- ~~h. Modify handrails~~
- ~~i. Modify toilet room doors/fixtures and accessories~~
- ~~j. Install accessible showers~~
- ~~k. Provide accessible seating/listening system in auditorium~~

50. Two Rivers Apartments

- a. Modify bathroom/kitchen and closet to make one apartment accessible
- b. Enlarge door ways in apartment
- c. Replace handrails at steps
- d. Provide a ramp
- e. Modify hardware and threshold for entrance to accessible unit
- ~~f. Define accessible parking space~~

~~51. University Farm~~

52. Warehouse

- a. Construct ramp at entrance
- b. Install handrails for steps
- c. Replace hardware
- d. Construct accessible toilet room
- e. Install new fountain
- ~~f. Provide accessible parking~~

53. Woodward Library – *Renovations Pending State Approval*

- a. Replace elevator
- b. Replace drink fountains
- c. Relocate controls and signs
- d. Create accessible stalls in toilet rooms
- e. Modify accessories and fixtures
- f. Lower 36" section of check out counter

~~54. Zeigler – Demolished~~

Handicap Lift Station Information

There are a total of five (5) chair lifts on campus in the following areas:

No.	Building/Equipment	Location	Manufacturer	Capacity
1	Browning – Wheelchair Lifts	2 nd flr Cashier	Wheel O Vator	750 Lbs.
1	Clement - Stage Lift	Theater	Concord	500 Lbs.
2	Clement – Wheelchair Lift	African America Cultural Ctr.	Garaventa	495 Lbs.
3	Ellington - Wheelchair	2 nd flr Hallway	Wheel O Vator	750 Lbs.
4	Hand Village – Wheelchair	1 st flr Lobby	Wheel O Vator	750 Lbs.
5	Trahern – Wheelchair	2 nd flr Main Lobby	Wheel O Vator	750 Lbs.

Members of the Committee for Persons with Disabilities composed an **APSU ADA Priority List** that was presented to President Tim Hall on April 11, 2008. The list was discussed during the April 17, 2008 committee meeting. Members who had worked diligently on the list continued to work on it following the meeting. The Committee for Persons with Disabilities proposes that the list presented to President Hall with a few changes make up the priority list. Item # 7 was discussed in several meetings and is presented as a final request to be given priority once items 1-6 have been completed.

APSU ADA Priority List 2007-08

1. Ellington Building—complete all of the ADA compliance items for Ellington Building listed as #14 in the campus survey by Law Engineering, Inc., conducted on March 28, 1995 and given below:

14. Ellington Hall

- ~~a. Redefine parking~~
 - b. Rebuild ramp
 - c. Modify step handrails
 - d. Replace doors/hardware/thresholds
 - e. Modify elevator controls and accessories
 - f. Modify doors
 - g. Replace handrails
 - ~~h. Modify toilet room doors/fixtures and accessories~~

Members of The Committee for Persons with Disabilities wish to go on record requesting that APSU complete the list of ADA compliance items, renovate ADA items that have become outdated, obsolete or meet minimum code requirements when scheduled renovations begin on the Ellington Building in the near future. It is the belief of our committee that compliance and beautification should be top priorities for Ellington since it serves all students, parents, personnel and visitors on APSU campus. Since it is the first building that visiting students and family members usually see when they come to campus, members of our committee agree that it should be the showcase for our campus. In the February 28, 2008 meeting, Mr. Joe Mills was asked to submit a proposal and pictures detailing problem entrances/exits in the Ellington Building. Our Committee goes on record supporting his proposal (attached); we believe his suggestions will help renew out-dated ADA compliant items.

2. Help Desk/Information Technology Building on Ford Street— In view of the information given in the e-mail listed below, our Committee understands that the request for ADA compliant sidewalks and ramps from the west side of campus appears to be impossible. However, we request that when the parking lots from Eighth Street are paved that every effort should be made to construct a walkway from the Eighth Street parking lot through the fenced access to the parking lot behind the Help Desk/Information Technology Building. This may provide individuals with disabilities some access from the West side of campus depending on their disabilities.

The following quote is taken from an e-mail sent by Mitch Robinson, Vice President for Finance and Administration, Friday, April 18, 2008: *"A paving design meeting was held earlier this morning with the assigned engineering firm and TBR representative to review bid documents for our paving project planned for this summer. During this meeting we discussed your committee recommendation about providing a compliant pathway from the Eight Street parking lot to the Help Desk building at 400 Ford Street. According to our consultants, we will not be able to make this improvement. Significant elevation changes between Eight and Ford Streets and other barriers such as the security fencing were the obvious reasons, but, as pointed out by our TBR representative, the building is already accessible from the main entrance on Ford Street including ADA parking."*

Regardless, we will continue to explore providing Help Desk assistance in the University center which will certainly be more convenient for our mobility impaired students. I have already mentioned this to Jeff Walton and he is eager to provide that service for our students, faculty, staff, and visitors."

3. Relocate ADA access from North campus in front of the bowl between Woodward Library and University Student Center onto the Clement Building handicap ramp. In the Committee meeting April 17, 2008, pictures were provided that detailed the shortest distance between the sidewalk leading from Woodward Library and the Northeast corner of the Clement Building. Pictures are attached for your review. Recommendations were made that signage and street painting should be addressed appropriately for that area. Please be reminded of the huge drainage problem in that area during heavy rainfall.
4. Claxton Building—as ADA funds become available, complete the ADA compliance items for the Claxton Building listed as #9 in the campus survey by Law Engineering, Inc., conducted on March 28, 1995 and given below:

9. Claxton Building

- a. ~~Redefine parking~~
- b. ~~Rebuild sloping pathway~~
- c. Install ramp
- d. ~~Replace door at lecture hall entrance~~
- e. ~~Install signage~~
- f. ~~Modify elevator controls and signals~~
- g. Modify doors, fountains, controls and signage
- h. Replace handrails
- i. Rebuild ramp
- j. Modify toilet room doors/fixtures/accessories
- k. Install listening system in lecture hall

It is the concern of members of this Committee that the elevator requested for Browning Building was actually mistakenly identified and was the one that was discussed for the Claxton Building. The Claxton Building has one of the highest volumes of student traffic on the second and third floors of any building on campus. Since before 2004-2005, the Claxton elevator has been a constant topic of discussion by The Committee for Persons with Disabilities and minutes can be produced to support that fact. The elevator in Claxton has had many days and weeks of down time, has had excessive repairs and has stranded many students and staff on the second and third floors. Thus, it is the concern of this committee that request for ADA funds to install a new elevator in Browning Building was mistakenly identified and has not been approved previously by this committee. Therefore, to spend \$200,000.00 in ADA funds on the Browning elevator for a low volume of traffic is not a wise use of ADA funds. Members of the 2007-08 Committee for Persons with Disabilities request a copy of the minutes of the meeting of the Committee for Persons with Disabilities approving \$200,000.00 in ADA funds for installing a new elevator in Browning Building.

5. Repair the sidewalk damage and misalignment on the North side of the Woodward Library.
6. Bathroom facilities and other ADA access provided at the Hand Baseball Field and other athletic facilities located on campus remains a priority.
7. Music/Mass Communications—as ADA funds become available, complete the ADA compliance items for the Music/Mass Building listed as #39 in the campus survey by Law Engineering, Inc., conducted on March 28, 1995 and given below:

39. Music/Mass Communications

- a. ~~Relocate accessible parking~~
- b. ~~Modify curb cuts~~
- c. Rebuild steps
- d. Modify ramp

~~e. Replace door closer~~

~~f. Install signage~~

g. Modify elevator controls/accessories

h. Modify doors/fountains/signage/controls

i. Modify stair handrails

j. Modify toilet room doors/fixtures and accessories

k. Provide accessible spaces/listening system

- a. ADA curb cut-ins on the following streets: Summer, Marion and Drain performed by the City of Clarksville last summer.
- b. Ellington Hall – bathroom renovation on all three floors.
- c. Trahern – installation of new ADA bathrooms.
- d. UC ADA entrances doors to cafeteria.
- e. Dunn Center – Installation of ADA bathrooms.
- f. 322 & 400 Ford Street – ADA ramps installed.