



Brian Nelson

**LET'S GO PEAY** — The Governors win over UT Martin kept the partisan crowd on its feet most of the time. Austin Peay fans estimated at 600 watched the Gova dump the Pacers 21-14.

## Security gone at Austin Peay

By Billy Fields  
editor

There is no longer a security force at Austin Peay, but the campus is still protected, the Department of Public Safety is the agency which protects the student body and the campus.

The change is in name and occurred over the summer when the security department and the administration decided just the officers could have better public relations and assume a more active role in law enforcement.

Under a safety and security organization the law enforcement role was last, and the university police officers were looked upon as "security guards" with no police ability or authority. This resulted in crimes not being reported and little action taking place after the crime was committed. The changing of the security image to a police oriented department along with the employment of trained police officers is expected to give the department a better self-image as well as reduce crimes by a large percent.

The new department of Public Safety will be divided into Units with each unit headed by a Police Sergeant except the Detective Unit which is headed by a Lieutenant. All activities handled by a unit are supervised and coordinated by the unit chief who is then

responsible for its being brought before the Director of Public Safety.

The Detective Unit is responsible for investigative support, evidence and property control, crime laboratory referrals, criminal records and uniform crime reports and their preparation.

The Crime Prevention unit is headed by a watch sergeant who is responsible for the duty shift assignments. General crime prevention is given to this unit as well as publicity about the new programs to prevent crime. "Operation ID" is under this unit while community relations are also handled through this unit. The training of officers is also given in this unit.

The Selective Enforcement Unit is basically responsible for crime analysis. Special operations are handled by this unit as well as target selection.

One of the most important units is the one dealing with safety. OSHA/TOSHA Administrations operations are exercised by this unit to keep Austin Peay in line with federal ordinances. Safety inspections are a prime concern of this special unit.

Another important unit to the campus is the Traffic Enforcement Unit which is designed to enforce traffic rules on the campus and the surround-

austin peay state university

# the all state

Monday morning  
Sept. 18, 1978  
20 pages  
VOL. 40-NO. 1

## ROTC ranks first in nation

Austin Peay's ROTC has been notified that it ranks first in the nation in physical training among 280 competing colleges and universities.

Nineteen APSU cadets averaged 472 points out of a maximum of 500. The competition took place at Ft. Lewis in Washington during a six week training session this past summer.

Some 6000 Army ROTC cadets across the nation

participated in the six week Advanced ROTC Camp at Ft. Bragg, N.C., Ft. Riley, Kan. and Ft. Lewis as a part of their preparation for commissioning as Army officers upon graduation from college.

Mitch Sertain was one of few cadets to finish with a perfect score. The events which made up the test included a horizontal ladder climb, a run, dodge

and jump event, a two mile run, an inverted crawl and a one minute of sit ups.

Austin Peay took the title from Washington State which won the title last year. Previous winners include several other large northwestern universities as well as some southwestern schools.

"The notification is an indication of the tremendous personal efforts of the cadets," Fred DeBolt, professor of military science commented.

"Also," DeBolt continued, "the success is shared by the hard-working faculty and staff as well as the administration who helped identify the quality students for ROTC. It simply adds up to a quality program."



**BIG BRASS** — Dr. Robert O. Riggs accepts the first place trophy from Mitchell Sertain which was won by Austin Peay's ROTC unit after taking top honors in summer camp. Cadet commander Kenneth Russell (left) and Cadet Polly Marcieski look on.

Gerald Tinsley

(cont. on page 2)

## Clift succeeds Morgan

Sherwin Clift, director of public information at Austin Peay State University, has been named president of the Tennessee College Public Relations Association for 1978-79.

Clift succeeds Bob Morgan, who was previously affiliated with the Tennessee Higher Education Commission. Morgan is now in college relations capacity with Mercy College of Detroit.

Assuming the role of presidency at the annual meeting of TCPRA held at George Peabody College recently, Clift served as president elect and chairman of the membership committee during 1977-78.

In the past year institution memberships in TCPRA jumped from 23 to a record 51 under Clift's leadership.

Other officers elected at the meeting are John Clark, UT—Knoxville, president elect, Joel Fryer, THEC, former editor of *The All State*, secretary; and Doug Stone, Tennessee Tech, treasurer.

Board of directors elected are Dan Coleman, UT—Nashville; Bill Hiles, Peabody; Doug Norman, UT—System; Stan Pearson, Motlow State; Rich Rhoda, State Board of Regents; Loyce Winfield, Christian Brothers; and Yvonne Wood, THEC.

Austin Echols, Lee College and a past

president, will serve with the officers and directors, which comprise the executive committee.

Purpose of the TCPRA is to support the improvement of higher education through the development of the professional practice of public relations in all facets of higher education in Tennessee.

## Endowment for Lit. program

Austin Peay State University has received \$1,000 support from the Literary Program of the Arts, according to Dr. Robert O. Riggs, president.

The money will be used for the "Residences for Writers" program, which is directed by Malcolm Glass, associate professor of English and the university's poet-in-residence.

"The program is an ongoing one that Austin Peay has continued on

reading and residences for writers," Dr. Wayne Stamper, coordinator of external grants, said. "This program involves the \$1,000 to be matched with \$1,000 of university funds."

The program will involve young writers within the community, and some outstanding writers within the state of Tennessee and surrounding states, according to Stamper.

A schedule for the 1978-79 academic year will be forthcoming from Glass.



Just sign here

Robert Smith

Student Affairs catches most problems relating to students and tries to alleviate them. This student is receiving information about a refrigerator.

## Security

(cont. from page 1)

ing streets. The engineering aspect of the traffic situation at the university is maintained by this unit.

Since communications is such an important part of police operations a special unit designed to coordinate such actions has been established. The Communications Unit is in charge of all radio communications as well as those made by telephone. The Criminal Justice Complex is linked into the Austin Peay campus through the Central Network while the National Crime Information Center

(NCIC) network is also a part of the new organization. The NCIC Network is used to help in the recovery of stolen property, gaining information on wanted persons, etc.

The last of the new units is the Administration Unit which handles the office work to a large degree. Departmental files, payroll for the department as well as citations and warrants are handled by this unit. Another responsibility is key control which establishes what person on campus has proper keys and who does not.

A new departmental mission has been established and is summed up by the department as "To provide an atmosphere of safety in which the academic endeavors of the university can be realized."

Any person who applies for a position with the department must meet all the minimum standards outlined in the Police Standards Manual which was established by the Tennessee Law Enforcement Planning Committee. All officers must attend the academy within the first year of employment.



Make  
'15 Weekly  
'65 Monthly

Plasma Donors Needed

Call us for information

431-4500

Bring in a friend

Hours

Tues.-Wed.-Fri. 12-7

Sat. 9-4

Contest

Sept 5 - Oct 14

Give Away \*215 Prizes

\*100 1st Place

Plasma Center

2855 Ft. Campbell Blvd.

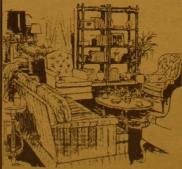
Between Gates 2 & 3

"Clarksville's Leading  
Home Furnishings For 58 years"

BRENNER'S

Colonial . . .  
Traditional . . .  
Contemporary

Also  
Custom Drapery,  
Wallpaper  
and Carpeting



Whether you need one small decorative piece or a Whole Household, You'll find just the right Furniture and Accessories at Brenner's. Best of All, most items are in stock for immediate delivery. Everything we show must meet these requirements: Good Taste, Style and Good Dollar Value. Do us a favor, visiting Clarksville families have done for 58 years. Always Shop Brenner's when you want Fine Furnishings for Your Home.

Phone 648-0628  
105-110-115 Franklin  
Downtown Clarksville



Robert French

THE WINNER AND STILL...Tim Stephens spoons in one last bite of ice cream to win first place in the second annual "offense versus the defense Ice Cream Eating Contest." Stephens led the defense to their first win in the two year series.

### Who's Who

## Applications available

Seniors eligible for listing in "Who's Who Among Students in American Universities and Colleges" for 1978-79, an annual recognition of outstanding students, should apply immediately at the office of the Vice President for Student Affairs, September 29, 1978 is the deadline.

Eligible students will meet the following requirements: (1) Be a candidate for the Bachelor's Degree in June or August 1979; (2) have an overall grade point average of at least 3.0000 on all college credit in all colleges and universities attended; (3) show evidence of participation in Austin Peay State

University campus organizations through (a) having served as an elected officer in a University recognized organization, or (b) having secured at least one award through a University organization, or (c) having been active in at least two University organizations.

Applicants who meet the above requirements will be ranked by the faculty and the highest 38-40 will be nominated

for recognition in "Who's Who Among Students in American Universities and Colleges."

Seniors who have already filed for their degree in June or August 1979, and who have a 3.0000 grade point average have been mailed applications. Additional applications are available at the office of the Vice President for Student Affairs through Friday September 29, 1978. No applications can be accepted after that date.

### COUPON

Plaza Rexall Drugs  
Clarksville Plaza  
Next to Montgomery Wards

Buy one get the second one for 1/2 price on any Revlon or Max Factor product. Mix or Match. APSU Students only.

Good thru 9-23-78

### Kitty Lynn's Hair Designers

\$12 for Shampoo

Cut  
Style

\$2 off

\$30 perm - \$4 off

Show APSU I.D.

303 Riverside Drive



## BANK OF CLARKSVILLE

502 Madison Street

*Join the fastest growing bank in town and become eligible for our special student program.*

MASTER  
CHARGE

MEMBER F.D.I.C.

VISA

# The All State offers new approach

As the student newspaper of Austin Peay State University, *The All State* serves the campus community as a news gathering organization which disseminates news in a weekly publication. The executive staff has set four areas as patterns for producing this paper, which are coverage, integrity, professionalism and fairness. By adhering to these ideals, we (the executive staff) feel that the 1978-79 *All State* will be good as, if not better than before.

Last year (according to the responses of students in the Letters to the Editor section) marked a low level for coverage in *The All State*. This area is crucial to the success of a newspaper not only on the college level, but on all other levels as well. One reason for some of the problems encountered by last year's *All State* was a lack of interest on the part of students, faculty and administrators at Austin Peay. At this point, *The All*

*State* has been swamped by requests from people who wish to be a part of *The All State* staff. This enthusiasm is a key to an improvement in coverage. If the student body and faculty as well as the administration will work with *The All State*, this year will be one of the finest ever. Through better coverage the staff hopes to merit this support.

*The All State* will take upon itself the task of raising its integrity to its highest level ever. As a staff, we feel that this is a true measure of the worth of a newspaper. Its value in terms of success are immeasurable since success and integrity go hand in hand. This will not be a simple assignment. Only through accuracy, honesty, and impartiality will *The All State* raise the level of integrity. This will be an indicator of *The All State's* desire to be a true leader on the Austin Peay campus.

A newspaper which lacks professionalism is one which is unacceptable by modern standards. In years past, a college newspaper could forego the idea of acting as a responsible member of the journalistic world, but not any more. If this high degree of professionalism is not achieved, then the paper is never truly accepted as a reliable source. At times, ridicule may be aimed at *The All State* for an attempt at professionalism, but if the campus community will allow this newspaper a period of indulgence then a "new feeling" will be felt.



This professionalism will only be equaled by this staff determination to act as journalists.

*The All State* will be as fair and unbiased as possible. Objectivity in newspapers is stressed, and according to most experts in the field of journalism, impossible to achieve. This newspaper will make every attempt to present all sides of a story and to give the readers an opportunity to form an opinion. We will not invade the privacy of anyone unless that person has done something as a private citizen which warrants public scrutiny. If *The All State* makes a mistake, we will make a proper correction as soon as possible. We will give all people the opportunity to respond in writing to any change leveled or to any comment entered into the newspaper.

We will work as long and hard as we can. Do not jump to conclusions without fairly examining the content of the news or editorials in the paper. Give us the chance to prove to you that *The All State* is a big part of the campus which can have a positive effect on all those concerned.

## Letter to the editor policy established

The staff of *The All State* realizes that sometime during the school year you, the students, faculty, and staff might strongly agree or disagree with some of the stories or editorials that will appear in this newspaper. Letters to the editor has been provided for those who wish to inform the entire population of Austin Peay of various opinions.

Naturally, there are rules which must be followed in order to have the letter published. Letters are not to exceed 300 words and must be legible and free of obscene or libelous material. Letters must be signed, with address or phone number included. No letter will be published unless it has been verified. The name of the writer will be withheld upon request.

A letter to the editor will not be

published if it can be interpreted in anyway as a form of advertising for a profit making organization.

If the editor deems it worthy, a letter exceeding 300 words in length will be published.

*The All State* wants and needs to hear from the student body. If you feel strongly about a subject that the readers of this newspaper need to know, write a letter. Mail it to Box 8334, Austin Peay State University, Clarksville, TN 37040, or bring it by *The All State* office in 110 Ellington Hall. All letters must be received no later than noon on Thursdays for publishing the next Wednesday.

*The All State* is concerned with and about what the student body is thinking. There is an open invitation to be heard and read through *The All State*.



## Editor's first comments

After many weeks (and years) the day I have waited for has arrived. Whether it is good or bad, it is here anyway.

Anxiety has become a daily occurrence. I feel, at times, that my energy level has tripled while at other times, I feel like I had better hide. Being the editor of a college paper is a lot harder than I once thought.

When the letter of appointment finally came, about one ton of pressure fell on my shoulders. It is impossible to describe the sensation of being named editor of a college paper.

I guess the tough parts realizing that now everyone is ready to see my staff. There is no more time to train, plan and study, the deadline has finally come.

Preparedness is the key. If a person does not understand the job, the job will take the person apart-piece by piece. First, the stomach goes, then the hair and finally the mind. This is the schedule of my demise according to a palm-reader I went to for words of wisdom.

I talked to editors of other papers seeking the key to appeasing 6,000 readers, but their answer was not forthcoming. The answer was to wait and I'd learn. So today, my lesson begins.

After 15 years of education, I have to go back to school to learn the business—that is—the basics about college students and papers.

My independent study over the summer covered page after page about newspapers. The past issues of *The All State* served as my bedtime stories. My dreams were often filled with the terror in the paper office. Its hard to imagine being a sacrifice to 6,000 people. I just hope the natives don't get restless.

Colleges and universities set new records in 1978-79 as bachelor degree recipients reach 1 million.

The future is uncertain. I will be as good as editor as I can. I stand to be judged by the readers and myself. I will try to live up to the standards set for me by my professors. Jan, Joel, Ken and Jeff really left big shoes to fill. I am the Editor of *The All State* and the student body of Austin Peay. I am looking forward to the relationship.

## SGA President outlines year

### Fellow Students,

For those of you here for the first time, congratulations on choosing Austin Peay to continue your education, for everyone else, welcome back!

This year promises to be a year of change. No doubt you have already seen the changes in several campus buildings. Dorm residents will find that many changes have occurred as well.

I have investigated certain ideas and will be bringing the following proposals to the senate this quarter.

• **A student discount card**—This will be a card that will enable APSU students to receive a price discount at many area businesses. I have already won the endorsement of the Clarksville Area Chamber of Commerce through my position as a member.

• **Spirit Program**—This will center around spirit competition among all organizations for a large trophy, as well as "disco rallies" before big games.

The first rally will be September 28, before our first home football game.

• **Day Care Center**—Kathy Dial, the Secretary of Student Relations, has already done a great deal of research on this. If we receive senate approval, we will jump immediately into the massive task of organizing such a project.

• **Austin Peay Week**—We will be working hard to expand the week long celebration. Hopefully, there will be even more activities than last year.

• **Drug Awareness**

WELL, HERE I AM BACK AT COLLEGE. I WONDER IF ANYONE REMEMBERS ME.



OUTTA MY WAY, SERK!



YEAH THEY STILL REMEMBER ME.



SOLES 7-12

Week—We are planning a week long series of demonstrations, seminars and professional lectures to help all of us become more aware of the complexities of drug usage/abuse. There are many things a person needs to know to protect themselves from rip-off drug dealers. Similarly, a thorough knowledge of our right and responsibilities under the law could prevent a long, unnecessary fall term. If the project gains senate approval, I feel it would be highly beneficial.

• **Class Description Handbook**—If the senate approves, we will produce a handbook that gives a detailed description of each class offered. The instructors attendance requirements and grading practices as well as number and frequency of test, papers and textbooks requirements will be included to help you plan your schedule. This project will take a lot of work, so if you are interested in doing something like this please let me know.

• **We will also**, the senate willing, establish a women's affairs and a minority affairs director. The job of these people would be to handle and investigate the problems unique to these two groups. They will also organize projects directed at these groups.

• **Greek Council**—I will bring to the senate a bill establishing a Greek Council, composed of representatives from all social greek organizations. This body would

represent greek interest to the SGA and the university administration as well as organize greek activities. I will be talking with the greek organization presidents about this very soon.

• **Student organizations**—The organizations committee will take a very active role this year in helping all organizations with their problems.

• **SGA Bookstore**—In an effort to make more usable paperbacks available to you we will be expanding the bookstore inventory. If you have paperbacks you know are still used in classes please sell them to us.

• **Entertainment**—The University Social Activities Board chairman Kenny Hall and Board Advisor, Mike Carrier, will be providing more and better entertainment than ever before. Bowl concerts, block parties, movies and dances will supplement the two or three big name concerts during the year. The USAB will also have a few surprises for us.

• **Residence Hall Council**—Now facing its first full year of existence, the RHC will be making great strides toward improving dormitory life. Dorm entertainment is the number one priority along with handling the problems of dorm residents.

All in all, I have a busy year ahead of me; however, I am blessed with a highly competent cabinet and executive officers as well as a competent senate.

Now all I need is you.

The SGA "Bitch Box" will be available again. Along with the recommendation forms. Please don't hesitate to let us know how you feel about anything. I personally will investigate your recommendation and then answer your letter.

Make sure you use this year, after all, we are working for you.

Have a great year.  
Yours for a Greater  
Austin Peay,  
David C. Mason  
SGA President

### Dear Students:

It is a pleasure for me to welcome you to the 1978-79 academic year at Austin Peay State University. For those of you who are returning to our campus I am sure that you will find that the summer has brought many improvements and much progress on campus.

Let me particularly call your attention to the renovations of the Cafeteria, the University Center and the Clement Building. In addition, you will notice on the front

campus the installation of sidewalk lights is well underway.

Additionally, there have been many academic improvements including the development of a Master of Business Administration Degree, a Master of Arts in Reading and the establishment of the new Austin Peay State University/Fort Campbell Center. Other academic proposals are being submitted for a Bachelor Degree in Nursing and a Bachelor of Science Degree in Computer Science.

For those of you who are new to our campus I want to welcome you and to urge you to become involved in a wide range of campus activities during your first days at Austin Peay. You will find that APSU has a friendly and relaxed campus atmosphere and it will be easy for you to develop new friends and close associations with your faculty. You will find also that our athletic program and recreational and

(cont. on page 6)

## the all state

editor in chief

billy dale

advertising manager

james hugh

associate editor

keith beckett

managing editor

billy joon

editorial editor

sak hinkle

The All State is the official student newspaper of Austin Peay State University. It is published every Wednesday of the academic year except for examination periods and holidays by students of this university. Opinions expressed are not necessarily those of the APSU administration.

The paper is printed at the Kentucky News Box in Hopkinsville, Ky. News information should be brought to 115 Ellington Hall or mailed to The All State, Box 1004, APSU, Clarksville, TN 37040.

Member Associated College Press, National Newspaper Service, Tennessee College Press Association, sponsored for national advertising by National Educational Advertising and C&M for national news by College Press Service. Entered as second class matter at Clarksville, TN.

## 'Heart' to play in Nashville

Heart, The Seattle-based rock sextet, headlines at the Municipal Auditorium on September 7 at 8 p.m.

Heart's current release is the controversial "Magazine" LP, which was withheld from release for months because of legal complications.

"Dreamboat Annie," the group's debut album, earned platinum status in both the United States and Canada as well as a gold disc in Australia.

Three songs from that album "Crazy on You," "Magic Man," and "Dreamboat Annie"—became major international hits providing the foundation for a triumphant concert career.

Heart's international appeal was confirmed in 1976 when the Canadian Academy of Recording Arts and Sciences honored the band with two prestigious Juno Awards—one for Best Group, the other for Best

Producer (Michael Flicker).

Heart originated in the Seattle/Vancouver area in 1972. In a few short years they have become a headline act drawing raves from both their fast-growing legion of fans and national rock critics.

### music

Last year, the group signed with Portrait Records and became members of the CBS family of music. Their debut Portrait album "Little Queen," produced by Flicker, includes "Love Alive," "Sylvan Song," "Dream of the Archer," "Cry To Me," and the hit single "Barracuda."

The group is guided by the vocals and stage leadership of Ann Wilson, who composes most of Heart's music with her sister, Nancy. In addition to the Wilson sisters, the sextet includes lead guitarist Roger Fisher, one of the founding members; bassist Steve Fossen, who has been playing in bands with Fisher since they were teenagers; percussionist Michael Derosier; and keyboard and guitar specialist Howard Leese.

Tickets (3,000 limited advance \$7, remaining \$8) go on sale September 11 at all Centra/Tik outlets. The concert is presented by Sound Seventy Productions, Inc.



Heart

## Band to appear

The Mission Mountain Wood Band will bring its diversified show to Austin Peay Monday September 25 for a Bowl Concert sponsored by the University Social Activities Board.

Mission Mountain Wood Band plays a variety of songs ranging from folk to country western sprinkled with rock. Some of the songs are a little old fashion, but this tends to add to the band's charm.

This will be the Mission Mountain Wood Band's second appearance at the Peay as they were here last spring for another bowl concert.

The band likes to spice their set with pixilating stories about acquaintances and travel as well as improbable CB talk. The group is capable of

getting down to solid rock through exceptional musicianship.

Kurt Bergeron is the lead guitarist, but plays the mandolin equally well. Rob Quist also plays the guitar, but switches to the pedal steel and the banjo. Terry Robinson moves from the acoustic guitar to the harmonica while drummer Greg Reichenberg establishes solid rock percussion.

The Mission Mountain Wood Band's latest album is "In Without Knocking". The best cuts from the LP are "Showboat", "Sweet Marie", and "Dancin' in Dancin'".

As one of the most traveled groups in America, the Mission Mountain Wood Band has appeared on stage with the Charlie Daniels Band, Jimmy Buffet, Heart, Edgar Winter and Bonnie Milsap.

Every show by the Mission Mountain Wood Band draws wide acclaim and several ovations from the audiences which are generally collage age.

## COLLINS MUSIC STORE

315 COMMERCIAL STREET CLARKSVILLE, TN 37040  
(615) 552-6448



MAKE COLLINS MUSIC STORE YOUR  
HEADQUARTERS FOR ALL YOUR  
MUSICAL NEEDS

## coming up

Monday, Sept. 18

Gl Eagle 7:30 p.m.

Tuesday, Sept. 19

"Hallalujah" Dance in front of Cafeteria 5 p.m.

Wednesday, Sept. 20

Bowl Concert featuring "Lickity Split" 11 a.m.

Movie "The Deep" Clement Auditorium 6:45 p.m. and 9:45 p.m. \$1.

Monday, Sept. 25

Bowl Concert featuring the return of "Mission Mountain Woodband" 11 a.m.

Wednesday, Sept. 27

Movie "Oh God" Clement Auditorium 6 p.m. and 9 p.m. \$1.

My  
Mother's  
Place

## COME PARTY WITH US

5 p.m. - 2 a.m.

Tuesday - Sunday

## COMING SOON

My Mother's Place  
Restaurant

## Letters

(cont. from page 5)

cultural opportunities are most positive. Please use every opportunity to avail yourself of these activities.

Again, to all of our students I want to extend my welcome and best wishes for a successful academic year.

With warmest personal regards.

Sincerely,  
Robert O. Rags  
President

# Hypnotist to entertain at the Peay

The USAB will present The Gil Eagles Show—demonstration of E.S.P. and hypnosis on Monday, September 8 at 7:30 p.m. in the Clement Auditorium free.

Gil Eagles is known as the entertaining psychic and the worlds fastest hypnotist. This dynamic showman will have an exhibition by demonstrating his incredible abilities of E.S.P. and hypnosis.

The veteran performer has appeared on more than 300 college and university campuses throughout the United States and Canada. He has also baffled countless thousands on four other continents. Now through recent tv and concert-platform appearances, he has established himself as America's foremost entertainer and lecturer in the field of E.S.P. and hypnosis.

Gil Eagles thrilling "One Man Show" uses total audience partici-

pation without confusion or collusion. This compelling and dynamic showman will skillfully and tastefully guide his audience through the amazing and fascinating possibilities of the mind. Names, numbers, innermost thoughts, and personal questions will be revealed and answered, are those actually held in the minds of the audience—all strangers to him. With miraculous speed and unsurpassed timing Gil Eagles will unleash his hypnotized subjects inhibitions, resulting in a laugh

provoking—side splitting hilarious event. Good taste and respect for the privacy and dignity of his audience always prevails.



**Gil Eagles**

Gil Eagles was born and raised in Tanganyika, East Africa and

educated in London and moved to the U.S.A. in 1960. It was while in Africa at the early age of thirteen that Gil Eagles first realized his sensitivity with clairvoyance and he practiced with the local natives (he speaks Swahili fluently). For over twelve years Mr. Eagles has been a serious and avid exponent of hypnotherapy as it applies to the medical and psychiatric professions. Mr. Eagles self-hypnosis and mind control seminar-workshops are now receiving national acclaim.

Gil Eagles has received

outstanding reviews from hundreds of sources including: "Fuzzling in nature, memorable in entertainment. A masterful presentation." "according to the late Ed Sullivan in the New York Daily News; Eagles is

unquestionably entertaining", says Variety, and "He works in a low key, relaxed, humorous style."

"The most fascinating and hilarious show I have ever seen," is the opinion of Brian Sheridan in the London Evening News.

**"I don't do miracles.  
They're too flashy."**

**"Oh, God!"**



GIORGIO ARMANI JOHN DENVER "OH GOD" TONY LAURENCE  
THE BEATLES BOB DYLAN BOB MARLEY BOB ROBERTSON  
BOB WOODWARD BOB WOODWARD BOB WOODWARD  
BOB WOODWARD BOB WOODWARD BOB WOODWARD

6 & 9

Clement Auditorium  
Sept. 27

\$1

**The Sound Shop**  
Everything in Records  
and Sound Equipment  
open daily til 9 p.m.  
Two Rivers Mall  
647-7703

# THE SOUND MACHINE

RESTAURANT & LOUNGE

**The Gong Show  
Bigger and Better  
Than Ever**

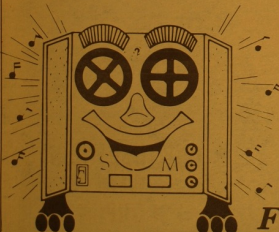
1st Prize \$50

2nd Prize \$25

Most Outrageous \$10

**First Gong Show—  
Monday, September 25**

552-3084



# Harvard Lampoon presents 'Book Awards'

To promote shamelessly the publication of their new book and to mark the decline of every other product in the literary marketplace, *The Harvard Lampoon* presented its First Annual "Bad Book Awards" at a freeloader-studded gala party in the Doubleday Suite on September 14th. Dolphin Books of Double day and Co., Inc., publisher of the sure-to-be-plugged *Harvard Lampoon Big Book of College Life* (pub. date September 1, \$5.95) hosted the cocktail klatch and awards ceremony.

*The Lampoon*, America's oldest humor magazine, has presented the well-known "Movie Worst" since 1945, and the "Bad Book Awards" were dispensed in the same malevolent spirit. *The Lampoon* chose to take on the publishing industry as a result of its dramatic voyage through

the sleazy seas of commercial publishing which resulted in the *Big Book Of College Life*.

In presenting the accolades for 1978, the *Lampoon* hopes to combat the current decline in both literary and moral standards of what it calls, "books we didn't like or couldn't afford." The awards

known containing the winners' names. *The Lampoon* editors provided discreet cash-laden "press releases" for reviewers and pony rides for any reviewers' children. There was also a greyhound race, although no wagering was con-

ducted.

*The Lampoon* announced the winners of some of the lesser prizes, which were awarded:

"The Grand Mal Prix was presented to James Fixx, author of the best-

selling "The Complete Book of Running" for the most embarrassing exploitation of a peer-pressure dad. Mr. Fixx made remarks and discussed his new books, *The Complete Book of Sitting* and *The Complete Book of Falling*.

written to promote a line of carpets and sofa cushions designed by Mrs. Fixx.

Memorial services immediately followed the reception which also featured a nude disco dance lesson.

## books

recognized "books we wouldn't be caught dead reading, although we would buy them for sick relatives and glance through them when we came to visit."

The reception itself featured an explanation of the arbitrary and haphazard voting process, the reading of the names and titles of nominees and the dramatic opening of enve-

Is anything  
worth the terror of

THE  
DEEP



A Columbia/EMI Presentation  
The Casablanca Filmworks Production

A Peter Yates Film

ROBERT SHAW • JACQUELINE BISSET • NICK NOLTE

"THE DEEP" LOUIS GOSSETT and ELI WALLACH

Based on the novel by Peter Benchley

Screenplay by Peter Benchley and Tracy Keenan Wynn

Produced by Peter Guber • Directed by Peter Yates

Music by John Barry

MPAA Rating: PG-13

Clement Auditorium  
8:45 & 9:45 Sept. 20 \$1

U.S. POSTAL SERVICE STATEMENT OF OWNERSHIP, MANAGEMENT AND CIRCULATION (Required by 39 U.S.C. 3685)			
1. TITLE OF PUBLICATION <b>THE ALL STATE</b>		2. PUBLICATION DATE <b>Sept. 8, 1978</b>	
3. FREQUENCY OF ISSUE <b>Weekly</b>		4. NO. OF ISSUES PUBLISHED ANNUALLY <b>28</b>	
5. LOCATION OF HEADQUARTERS OR GENERAL BUSINESS OFFICES OF THE PUBLISHERS (Not printing)		6. ANNUAL SUBSCRIPTION PRICE <b>\$1.50</b>	
7. LOCATION OF THE HEADQUARTERS OF GENERAL BUSINESS OFFICES OF THE PUBLISHERS (Not printing)			
8. NAMES AND COMPLETE TITLES OF PUBLISHER, EDITOR, AND MANAGING EDITOR			
PUBLISHER (Name and Address) <b>Austin Peay State University, Clarksville, Tennessee 37040</b>			
EDITOR (Name and Address) <b>Billy Fields, Austin Peay State University, Clarksville, Tennessee 37040</b>			
MANAGING EDITOR (Name and Address) <b>Bobby Jones, Austin Peay State University, Clarksville, Tennessee 37040</b>			
9. OWNER (If owned by a corporation, its name and address must be stated and immediately thereunder the names and addresses of stockholders owning or holding 1 percent or more of total amount of stock. If not owned by a corporation, the names and addresses of the individual owners must be given. If owned by a partnership or other unincorporated firm, its name and address, as well as that of each individual must be given.)			
NAME ADDRESS <b>Austin Peay State University College Street, Clarksville, Tennessee 37040</b>			
10. KNOWN BONDHOLDERS, MORTGAGEES, AND OTHER SECURITY HOLDERS OWNING 1 PERCENT OR MORE OF TOTAL AMOUNT OF BOND, MORTGAGES OR OTHER SECURITIES OF THIS OR ANY ISSUE			
NAME ADDRESS			
11. FOR CIRCULATION BY NONPROFIT ORGANIZATIONS AUTHORIZED TO MAIL AT SPECIAL RATES (Section 110.122, PM) The purpose, function, and nonprofit status of this organization and the exempt status for Federal income tax purposes (Check one)			
<input type="checkbox"/> HAVE NOT CHANGED DURING PRECEDING 12 MONTHS <input type="checkbox"/> HAVE CHANGED DURING PRECEDING 12 MONTHS (If changed, publisher must submit explanation of change with this statement.)			
12. EXTENT AND NATURE OF CIRCULATION		13. AVERAGE NO. COPIES EACH ISSUE DURING PRECEDING 12 MONTHS	
A. TOTAL NO. COPIES PRINTED (Net Press Run)		ACTUAL NO. COPIES OF SINGLE ISSUE PUBLISHED NEAREST TO FILING DATE	
B. PAID CIRCULATION 1. SALES THROUGH DEALERS AND CARRIERS STREET VENDORS AND COUNTER SALES		6,000	
2. MAIL SUBSCRIPTIONS		4,130	
C. TOTAL PAID CIRCULATION (Sum of 12B.1 and 12B.2)		1,420	
D. FREE DISTRIBUTION BY MAIL, CARRIER OR OTHER MEANS SAMPLER, COMPLIMENTARY, AND OTHER FREE COPIES		5,550	
E. TOTAL DISTRIBUTION (Sum of 12C.1 and 12C.2)		400	
F. COPIES NOT DISTRIBUTED OFFER OR LEFT OVER, UNACCOUNTED, SPOILED AFTER PRINTING		5,950	
G. RETURNS FROM NEWS AGENTS		50	
H. TOTAL (Sum of 12D.1 and 12D.2. It will equal the net press run shown in 12A.)		6,000	
14. I certify that the statements made by me above are correct and complete.			
SIGNATURE AND TITLE OF EDITOR, PUBLISHER, BUSINESS MANAGER, OR OWNER <b>Patsy Littleton, Advisor</b>		SIGNATURE AND TITLE OF EDITOR, PUBLISHER, BUSINESS MANAGER, OR OWNER <b>Billy Fields, Editor-in-Chief</b>	
15. FOR COMPLETION BY PUBLISHERS MAILING AT THE REGULAR RATE (Section 110.122, Postal Service Manual) By U.S. C. 110.122 (Section 110.122, PM) (If printed and mailed by first-class mail, attach label "FIRST CLASS" to the front of the publication.) 1. I am a member of the National Association of Publishers (NAP) and I am authorized to mail this publication at the special rate. 2. I am a member of the National Association of Publishers (NAP) and I am authorized to mail this publication at the special rate. 3. I am a member of the National Association of Publishers (NAP) and I am authorized to mail this publication at the special rate. 4. I am a member of the National Association of Publishers (NAP) and I am authorized to mail this publication at the special rate. 5. I am a member of the National Association of Publishers (NAP) and I am authorized to mail this publication at the special rate. 6. I am a member of the National Association of Publishers (NAP) and I am authorized to mail this publication at the special rate. 7. I am a member of the National Association of Publishers (NAP) and I am authorized to mail this publication at the special rate. 8. I am a member of the National Association of Publishers (NAP) and I am authorized to mail this publication at the special rate. 9. I am a member of the National Association of Publishers (NAP) and I am authorized to mail this publication at the special rate. 10. I am a member of the National Association of Publishers (NAP) and I am authorized to mail this publication at the special rate. 11. I am a member of the National Association of Publishers (NAP) and I am authorized to mail this publication at the special rate. 12. I am a member of the National Association of Publishers (NAP) and I am authorized to mail this publication at the special rate. 13. I am a member of the National Association of Publishers (NAP) and I am authorized to mail this publication at the special rate. 14. I am a member of the National Association of Publishers (NAP) and I am authorized to mail this publication at the special rate. 15. I am a member of the National Association of Publishers (NAP) and I am authorized to mail this publication at the special rate. 16. I am a member of the National Association of Publishers (NAP) and I am authorized to mail this publication at the special rate. 17. I am a member of the National Association of Publishers (NAP) and I am authorized to mail this publication at the special rate. 18. I am a member of the National Association of Publishers (NAP) and I am authorized to mail this publication at the special rate. 19. I am a member of the National Association of Publishers (NAP) and I am authorized to mail this publication at the special rate. 20. I am a member of the National Association of Publishers (NAP) and I am authorized to mail this publication at the special rate. 21. I am a member of the National Association of Publishers (NAP) and I am authorized to mail this publication at the special rate. 22. I am a member of the National Association of Publishers (NAP) and I am authorized to mail this publication at the special rate. 23. I am a member of the National Association of Publishers (NAP) and I am authorized to mail this publication at the special rate. 24. I am a member of the National Association of Publishers (NAP) and I am authorized to mail this publication at the special rate. 25. I am a member of the National Association of Publishers (NAP) and I am authorized to mail this publication at the special rate. 26. I am a member of the National Association of Publishers (NAP) and I am authorized to mail this publication at the special rate. 27. I am a member of the National Association of Publishers (NAP) and I am authorized to mail this publication at the special rate. 28. I am a member of the National Association of Publishers (NAP) and I am authorized to mail this publication at the special rate. 29. I am a member of the National Association of Publishers (NAP) and I am authorized to mail this publication at the special rate. 30. I am a member of the National Association of Publishers (NAP) and I am authorized to mail this publication at the special rate. 31. I am a member of the National Association of Publishers (NAP) and I am authorized to mail this publication at the special rate. 32. I am a member of the National Association of Publishers (NAP) and I am authorized to mail this publication at the special rate. 33. I am a member of the National Association of Publishers (NAP) and I am authorized to mail this publication at the special rate. 34. I am a member of the National Association of Publishers (NAP) and I am authorized to mail this publication at the special rate. 35. I am a member of the National Association of Publishers (NAP) and I am authorized to mail this publication at the special rate. 36. I am a member of the National Association of Publishers (NAP) and I am authorized to mail this publication at the special rate. 37. I am a member of the National Association of Publishers (NAP) and I am authorized to mail this publication at the special rate. 38. I am a member of the National Association of Publishers (NAP) and I am authorized to mail this publication at the special rate. 39. I am a member of the National Association of Publishers (NAP) and I am authorized to mail this publication at the special rate. 40. I am a member of the National Association of Publishers (NAP) and I am authorized to mail this publication at the special rate. 41. I am a member of the National Association of Publishers (NAP) and I am authorized to mail this publication at the special rate. 42. I am a member of the National Association of Publishers (NAP) and I am authorized to mail this publication at the special rate. 43. I am a member of the National Association of Publishers (NAP) and I am authorized to mail this publication at the special rate. 44. I am a member of the National Association of Publishers (NAP) and I am authorized to mail this publication at the special rate. 45. I am a member of the National Association of Publishers (NAP) and I am authorized to mail this publication at the special rate. 46. I am a member of the National Association of Publishers (NAP) and I am authorized to mail this publication at the special rate. 47. I am a member of the National Association of Publishers (NAP) and I am authorized to mail this publication at the special rate. 48. I am a member of the National Association of Publishers (NAP) and I am authorized to mail this publication at the special rate. 49. I am a member of the National Association of Publishers (NAP) and I am authorized to mail this publication at the special rate. 50. I am a member of the National Association of Publishers (NAP) and I am authorized to mail this publication at the special rate. 51. I am a member of the National Association of Publishers (NAP) and I am authorized to mail this publication at the special rate. 52. I am a member of the National Association of Publishers (NAP) and I am authorized to mail this publication at the special rate. 53. I am a member of the National Association of Publishers (NAP) and I am authorized to mail this publication at the special rate. 54. I am a member of the National Association of Publishers (NAP) and I am authorized to mail this publication at the special rate. 55. I am a member of the National Association of Publishers (NAP) and I am authorized to mail this publication at the special rate. 56. I am a member of the National Association of Publishers (NAP) and I am authorized to mail this publication at the special rate. 57. I am a member of the National Association of Publishers (NAP) and I am authorized to mail this publication at the special rate. 58. I am a member of the National Association of Publishers (NAP) and I am authorized to mail this publication at the special rate. 59. I am a member of the National Association of Publishers (NAP) and I am authorized to mail this publication at the special rate. 60. I am a member of the National Association of Publishers (NAP) and I am authorized to mail this publication at the special rate. 61. I am a member of the National Association of Publishers (NAP) and I am authorized to mail this publication at the special rate. 62. I am a member of the National Association of Publishers (NAP) and I am authorized to mail this publication at the special rate. 63. I am a member of the National Association of Publishers (NAP) and I am authorized to mail this publication at the special rate. 64. I am a member of the National Association of Publishers (NAP) and I am authorized to mail this publication at the special rate. 65. I am a member of the National Association of Publishers (NAP) and I am authorized to mail this publication at the special rate. 66. I am a member of the National Association of Publishers (NAP) and I am authorized to mail this publication at the special rate. 67. I am a member of the National Association of Publishers (NAP) and I am authorized to mail this publication at the special rate. 68. I am a member of the National Association of Publishers (NAP) and I am authorized to mail this publication at the special rate. 69. I am a member of the National Association of Publishers (NAP) and I am authorized to mail this publication at the special rate. 70. I am a member of the National Association of Publishers (NAP) and I am authorized to mail this publication at the special rate. 71. I am a member of the National Association of Publishers (NAP) and I am authorized to mail this publication at the special rate. 72. I am a member of the National Association of Publishers (NAP) and I am authorized to mail this publication at the special rate. 73. I am a member of the National Association of Publishers (NAP) and I am authorized to mail this publication at the special rate. 74. I am a member of the National Association of Publishers (NAP) and I am authorized to mail this publication at the special rate. 75. I am a member of the National Association of Publishers (NAP) and I am authorized to mail this publication at the special rate. 76. I am a member of the National Association of Publishers (NAP) and I am authorized to mail this publication at the special rate. 77. I am a member of the National Association of Publishers (NAP) and I am authorized to mail this publication at the special rate. 78. I am a member of the National Association of Publishers (NAP) and I am authorized to mail this publication at the special rate. 79. I am a member of the National Association of Publishers (NAP) and I am authorized to mail this publication at the special rate. 80. I am a member of the National Association of Publishers (NAP) and I am authorized to mail this publication at the special rate. 81. I am a member of the National Association of Publishers (NAP) and I am authorized to mail this publication at the special rate. 82. I am a member of the National Association of Publishers (NAP) and I am authorized to mail this publication at the special rate. 83. I am a member of the National Association of Publishers (NAP) and I am authorized to mail this publication at the special rate. 84. I am a member of the National Association of Publishers (NAP) and I am authorized to mail this publication at the special rate. 85. I am a member of the National Association of Publishers (NAP) and I am authorized to mail this publication at the special rate. 86. I am a member of the National Association of Publishers (NAP) and I am authorized to mail this publication at the special rate. 87. I am a member of the National Association of Publishers (NAP) and I am authorized to mail this publication at the special rate. 88. I am a member of the National Association of Publishers (NAP) and I am authorized to mail this publication at the special rate. 89. I am a member of the National Association of Publishers (NAP) and I am authorized to mail this publication at the special rate. 90. I am a member of the National Association of Publishers (NAP) and I am authorized to mail this publication at the special rate. 91. I am a member of the National Association of Publishers (NAP) and I am authorized to mail this publication at the special rate. 92. I am a member of the National Association of Publishers (NAP) and I am authorized to mail this publication at the special rate. 93. I am a member of the National Association of Publishers (NAP) and I am authorized to mail this publication at the special rate. 94. I am a member of the National Association of Publishers (NAP) and I am authorized to mail this publication at the special rate. 95. I am a member of the National Association of Publishers (NAP) and I am authorized to mail this publication at the special rate. 96. I am a member of the National Association of Publishers (NAP) and I am authorized to mail this publication at the special rate. 97. I am a member of the National Association of Publishers (NAP) and I am authorized to mail this publication at the special rate. 98. I am a member of the National Association of Publishers (NAP) and I am authorized to mail this publication at the special rate. 99. I am a member of the National Association of Publishers (NAP) and I am authorized to mail this publication at the special rate. 100. I am a member of the National Association of Publishers (NAP) and I am authorized to mail this publication at the special rate.			

The All State as required to print a copy of our Statement of Ownership, Management and Circulation in our first issue in order to circulate our paper through the Postal Service. Copies of *The All State* are distributed to APSU alumni, advertisers and other persons through the mail.





# HEY APSU STUDENTS!

GET A 10% DISCOUNT AT



on all our tires and servicing to be done  
with ID card

Highway 41A North  
between gates 2 & 3  
Fort Campbell



Phone  
431-5202

## -OUR SERVICES-

We have a Snap On Dignostic Machine.

— SPECIAL THIS WEEK —

Tune up:

**\$33.95**

*Most Cars*

Plugs, points  
Condenser and labor

Brakework:

Disc **\$61.95**

Drum **\$37.95**

2 front and turn rotors.  
2 wheels and turn drums

Parts & labor  
Repack front bearing

Alignment:

**\$12.95**

most American cars

High speed balance: **\$3.50** reg.  
wheel

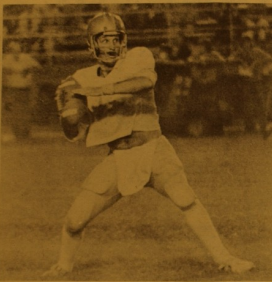
**\$5** mags with stick  
on wgt.

Oil change, filter and lube

**\$10.95**

Weekend matchup

# Governors square off with Western



Robert Smith

HERE IT COMES—Rudy Christophel with surprised look on his face gets ready to win a long pass. Christophel led Austin Peay to an opening game win 21-14 over UT Martin.

## Preferably alive

### Wanted: dead or alive

This will be the first and last time I write this sports column IF (and that is a big if) a sports editor appears in *The All State* office. For this reason, the first "Instant Replay" will be basically devoted to sports writers on campus.



## instant replay

By Billy Fields  
editor

The responsibilities which are attached to being sports editor of this paper are very easily defined—to coordinate and cover intercollegiate as well as intramural sports at Austin Peay. The sports editor will have an assistant and several reporters to help in this coverage.

Qualifications are also easily defined. The sports editor can be either male or female who has an interest in sports and wants to be a

part of a fast-paced world. Typing skills are fundamental to the job. A person willing to go out and meet people usually makes the best sports editor. This person will need to have previous experience in writing.

There are fringe benefits which go with the job. As the former sports editor, I know the good things which happen to sports editors. The biggest benefit is the travel to the sporting events. This person will travel around the state as well as the region to cover the Governors and the Lady Governors. The connections and friendships made will last a lifetime. There is also a performance scholarship of \$200 per quarter attached to the job.

There are headaches as well. This position comes under fire more than anyone, other than the editor. The job is filled with controversy to say the least.

Somewhere out on Austin Peay's campus, the next sports editor is lurking. Anyone who wants to inquire about the job should come to *The All State* office and see me. This may be a big opportunity.

When the Gove take the field Saturday against Western Kentucky, they could be in for the fight of a lifetime if the "Toppers" have their way.

The Hilltoppers are a weathered bunch of veterans who have seen the bottom of the barrel and are now trying to get out. Last season Western Kentucky went 1-8-1 which was one of their worst records ever. Their team was composed mainly of freshmen and sophomores. Now those youngsters are "grown up" and ready to get down to some serious football.

Last season the Toppers went away from the "T" formation which had been so good to them in the past. The coaching staff opted for a twin-back offense to help mix up their game strategy. It did not work. Western Kentucky has gone back

to the "T" and tailback Jimmy Woods is made for the offense.

Woods is a "home town boy" from Clarksville who slipped away from the Peay to play in Bowling Green. Since, joining Western Kentucky, Woods has become the franchise to a large degree. During his three year career, he has rolled up over 2100 yards rushing and has scored 17 touchdowns. During 1977 Woods averaged over 90 yards per game.

John Hall calls the signals for the Toppers. A 6-0 sophomore, Hall has proven to be versatile from the quarterback position. As a freshman, Hall completed 50 percent of his passes and threw two for touchdowns.

Leading the Hilltopper defense is Reginald Hayden who will play at

bandit back. Hayden was moved from defensive tackle after being named second team All-OVC. Considered an excellent pass rusher, Hayden was elected captain by his teammates in the spring.

Rumors have filled the air on the Hill at Western Kentucky about the future of coach Jimmy Feix who had led the Toppers into national prominence. Some say that this will be his last year while others tend to think that this year will turn around the recent Western Kentucky woes.

Western Kentucky is coming off a big win over Illinois State where the Hilltoppers took them 28-6.

The Toppers are big and quick, and determined to improve on the 1977 finish. Game time is 1 p.m. in Bowling Green at L.T. Smith Stadium.

## Student involvement urged

By Kim Suddeth

The intramural program, under the direction of Buddy Bumgarner, is expected to be better than ever with many events to promote involvement.

More emphasis is being placed on student use of the available facilities and student participation in the various team sports.

The activities range from flag football in the fall quarter to basketball teams and contests in the winter quarter. Volleyball, tennis, softball and track will be featured during the spring. Fraternities, sororities and dormitory groups are invited to form teams and enter competition.

As an ideal alternative for students who enjoy playing sports but do not enjoy the fierce competition of athletic programs, APSU intramurals play a big part in campus life.

"Friendship first, competition second" is the intramural philosophy

which holds throughout the rules of each game as well as the activities themselves.

The classification of teams falls into three categories: Men's league, women's league and co-recreational (men and women) league. The co-rec league, in accordance with Title IX, gives men and women more opportunity to get together and fight it out. The rules have been modified slightly to allow everyone a fair chance in the game, whether it be football, basketball or volleyball. Those who are on athletic teams are prohibited from playing on a team sport which is similar to their own.

Another part of the intramural program is the recreation aspect, which allows students to enjoy the facilities without being on a team.

The swimming pool is open Monday through Thursday from 6 p.m. until 9 p.m. and on Saturday and Sunday from 3 until 5 p.m.

There are twelve

repaired tennis courts, four racquetball courts, the gym court and a weight room which are open year-round for student use. The Rec-Check Counter offers different pieces of equipment to check out and use in these facilities.

Bumgarner commended President Riggs for his support of this program and his interest in the students. The \$1.5 million to renovate the Memorial Gym and the \$65,000 used to build the racquetball courts are evidence of Dr. Riggs's support.

The full-time graduate assistant, Rick Wilcock is a part of the "year of expansion" that Bumgarner has been looking forward to. In years past, the personnel growth rate fell behind the rate of growth in the program and caused some problems due to the lack of staff. This assistant was added to alleviate the problems.

Anyone wishing information should check the Intramural Office located in the Memorial Health Building.

# Thompson holds first coaches clinic

Austin Peay Head Basketball Coach Ed Thompson can be proud of the staff he has put together for his first annual clinic September 23.

The five coaches who will be speaking at Winfield Dunn Center from 9 a.m. until mid-afternoon that day are all proven winners.

They include Nashville Bellevue Coach Charles Anderson, Memphis Melrose Coach Dorsey Simons, Christian County (Ky.): Coach Lynn Dunbar, University of Louisville; Assistant Jerry Jones and new Auburn University Head Coach Sonny Smith.

In 16 years of coaching at Bellevue and Stratford in Nashville, Anderson has averaged 20-plus wins per year and never had a losing team with the exception of his first, which contained only freshmen and sophomores. His teams have

participated in Tennessee state tourney competition eight times, they've been Nashville Interscholastic League champions six times and he's coached eight all-staters.

An equally successful high school coach, at Scottsville, Mayeville and Christian County Dunbar has won 20 or more games 10 out of the last 12 years. In 1976, he directed Christian County all the way to the state finals before losing to Edmondson County and last year, he took an all junior team to the quarter-finals.

But when it comes to successful high school coaching, Sims may have them all topped. Included among his accomplishments while at Chattanooga Riverside and Melrose is the longest winning streak in Tennessee prep history (66), back-to-back state championships in 1968 and 1969 and the Class AAA state title a year ago. In

four years at Melrose, his teams have produced a 129-15 record, four league titles, two city championships, four district and two regional titles.

Jones was another successful high school coach before he joined the collegiate ranks at Pepperdine and two years later at Louisville. His combined high school coaching record was 19-62. The former David Lipscomb College star has also been a main cog in Louisville's frequent

trips to the NCAA tournament the last five years.

There is a good chance Auburn will be going places now that Smith has assumed the reins. Ohio Valley Conference fans became aware of his talents last year, when he directed East Tennessee to a share of the league title in his second season with the Buccaneers. The Roan Mountain native established a 126-87 record during 11 years of high school coaching

before going on to assistant coaching positions at William and Mary, Pepperdine and Virginia Tech.

The clinic will begin with registration at 8:30 and a 10-minute introduction and welcome period. That will be followed by three 50 to 60 minute sessions, lunch in the university cafeteria and

two more one-hour sessions.

Anyone wishing to have an announcement broadcast over the public address system at 1978 Austin Peay home football games must have that announcement cleared through the sports information office by the Thursday before each game.

## OVC Predictions

### Football

#### Coach's

1. Tennessee Tech
2. Eastern Kentucky
3. Austin Peay
4. Murray State
5. Western Kentucky
6. Morehead State
7. Middle Tennessee

#### The All State's

1. Tennessee Tech
2. Austin Peay
3. Eastern Kentucky
4. Western Kentucky
5. Murray State
6. Morehead State
7. Middle Tennessee

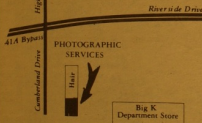


## One Hour Martinizing Cleaners

### Fast Service

615 Riverside Drive

## To Give Better & Faster Service PHOTOGRAPHIC SERVICES OF CLARKSVILLE



Has moved to a New Building—to the right of Big K in the Clarksville Square Shopping Center, adjacent to Hair Barber Shop.

### Come and See Our:

- **SHOWROOM**...for Cameras, Film (Color & BW), Processing, Developing & Printing Equipment and Supplies, Lenses, Filters, Bags, Tripods, etc.
- **STUDIO**...For the best in Portraits, Passports, Application Mugs, etc. And Our
- **OFFICE**...To make appointments for Weddings, Home or Outdoor Portraits, Aerials.

## And ALL YOUR PHOTOGRAPHIC NEEDS

Gerald Tenney's  
Photographic Services of Clarksville  
1050 1/2 Riverside Dr. Phone: 552-2771

## FOOTBALL IS ALIVE

AUSTIN PEAY

VS

EASTERN KENTUCKY

ON

Sept. 30 1:30 p.m.

## Fill the Stadium

## 1978 Lady Gobs Volleyball

September 25	Lambeth College Fred Hardeman	(A)	6:30
September 29 & 30	Tennessee Tech Invitational	(A)	
October 2	Pick University	(A)	6:30
October 5	Trevoce College	(H)	6:30
October 6 & 7	UT--Martin Invitational	(A)	
October 8	Lambeth College	(H)	6:30
October 12	Middle Tennessee State University	(A)	6:30
October 16	Murray Kentucky	(A)	6:30
October 19	Trevoce College	(A)	6:30
October 23	Pick University Murray Kentucky	(H)	6:30
October 24	Tennessee Tech	(A)	
October 27 & 28	The University of Tennessee-Chattanooga Invitational	(A)	
October 31	University of Tennessee Martin	(A)	6:30
November 3 & 4	Austin Peay State University Invitational		
November 9, 10, 11	TCWST State Tournament at Austin Peay State University		
November 16, 17, 18	Southern Region II Tournament Florence, South Carolina	(A)	

## Golf team divides

The APSU men's golf team will divide into two squads and play in separate tournaments this week.

Six players will participate in the 19-team Hart Invitational, hosted by Southern Benedictine College, Cullman, Ala., Thursday and Friday, Sept. 21-22.

Five Governors will play in the 14th annual Murray State Intercollegiate at Murray, Ky., Friday and Saturday, Sept. 22-23.

Head coach Sherwin Cliff will accompany the squad to the sixth annual Hart Invitational play consisting of 18 holes each day.

Assistant coach Sy Mandie, a two-time All-OVC golfer for the Gobs, will trek with the team for 36 holes on Friday and 18 on Saturday at Murray.

Participating schools in the Hart Invitational include Southern Mississippi, UT-Chattanooga, Troy State, Columbus College, North Alabama, Jacksonville State, Tennessee Tech, Carson-Newman, Sewanee, David Lipscomb, Montevallo, Tennessee Wesleyan, Shorter, West Georgia, Union, Southwestern, Leandera, APSU and hosting Southern Benedictine.

The Murray affair

includes defending champion Middle Tennessee, Kentucky, Southern Illinois, Eastern Kentucky, Western Kentucky, Tennessee Tech, Indiana State, Evansville, host Murray State and APSU.

Following the two opening tournaments, the Governors will have some practice time to determine the top-notch players from a roster of 16 eligible student-athletes.

Returning lettermen include juniors Bill Holzman, Ottawa, Canada; Jim Linklater, Birmingham, Mich.; Jim Mandie, Clarksville; and Richard Smith, Paris.

## 1978 Fall Golf

Date	Event	Site	Holes
Sept. 21-22	Hart Invitational	Cullman, Ala.	18-18-36
Sept. 22-23	Murray State Intercollegiate	Murray, Ky.	36-18-54
Oct. 9-10	Opryland Collegiate Classic	Naashville, Tenn.	18-18-36
Oct. 14-15	Eastern Kentucky Fall Invitational	Richmond, Ky.	36-18-54
Nov. 3	Alumni-Varsity Match	Clarksville, Tenn.	18

# Parks & Belk

Your Happy Shopping Store

### Run The Campus Jog In Stride

Look great while you keep in shape. Super absorbent 100% Polyester Warm-Up Suit comes in flashy colors including spirited red and peppy green. S-XL usually . . . \$16

## \$14.88



## Leather Moccasins

Long time sailing and campus favorite! True barefoot moccasin comfort. Elk-tanned cowhide designed for repeated wearings. Rugged look, flexible, long-wearing.



Ladies'  
Sizes 5 1/2-10 S-M  
\$38

Men's  
Sizes 7 1/2-13  
Widths S-W  
\$38

Country Cobbler  
FASHION SHOES  
CLARKSVILLE  
TWO RIVERS MALL



# BIG SAVINGS

## FOR BACK TO SCHOOL



BIKE LOCK & PADLOCK



LAMP



DESK LAMP



FLUORESCENT LAMP



ROTARY FILE



FILE



STACKING CHAIR



PAIR OF SCISSORS



CLEAR TAPE



STAPLER



PASTE



TAPES



PUNCH



PENCIL SHARPENER



STENO NOTEBOOKS



ENVELOPES

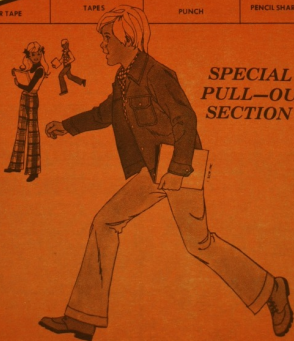


PENCILS



CRAYONS

**the all state**  
BACK TO SCHOOL SPECIAL



**SPECIAL  
PULL-OUT  
SECTION**

**BACK-to-SCHOOL  
VALUES**

## Numbers to remember

Admissions questions  
Emergency (any type other than fire)  
Entertainment (movies, etc. on campus)  
Financial Aid  
Football Tickets (for others)  
Game Room (pool, foosball, pinball)  
Housing (including complaints)  
Long distance phone calls

Meals  
Medical attention  
Part-time employment  
Phone numbers on campus  
Recreation  
Refrigerators  
Repairs of dorm room  
Sorority/Fraternity Information  
Student Publications (*The All State*, *Farewell* and *Hail, The Tower*)  
Supplies  
Textbook Sales and Rentals

Office of Admissions - 7661  
Campus Police - 7786  
Student Center - USAB bulletin boards  
Student Financial Aid Office - 7907  
Ticket Office - 7761  
Basement of Student Center  
Ken Mosley - Housing Office - 7452  
South Central Bell on Madison Street \*  
\*A special card is required for charging long distance calls to your phone in the dorm.  
University cafeteria/Gov's Grill  
Health Services - 7107  
Placement Office - 7896  
Operator - 7011  
Memorial Health - 7564  
Student Development - 7451  
Your dorm supervisor  
Mildred Deason - 7451  
Betsy Littleton - 7341

University Store - 7655  
Bookstore, Memorial Health Building - 7462

## ACT offered

Persons desiring to take the American College Test (ACT) on October 21 on the Austin Peay State University campus must meet the September 22 deadline. Jane Southard, APSU testing program coordinator, said today.

Service (ETS) of Princeton, N.J., are required by most colleges and universities across the country for admission or counseling purposes.

Bulletins of information describing registration procedures and registration forms may be obtained from the APSU Testing Center, 125 McReynolds Hall.

## Littleton named advisor

Betsy Littleton has been named Coordinator of Student Publications for Austin Peay State University.

As coordinator, Littleton will serve as the advisor to *The All State*, the *Farewell* and *Hail* as

well as the *Tower*.

A 1972 graduate of Austin Peay, Littleton has had a wide variety of experience in publications as well as related fields. Her initial experience came while still in college where she served as Assistant Editor to the *Tower*. She became an instructor at Hopkinsville Community College assigned to Eagle University. From there she went to Josten's/American Yearbook as a publication consultant.

A mother of two, she is the wife of Dick Littleton, Director of Admissions, for Austin Peay State University.

"I am looking forward to working with the editorial staff. I feel the experience of the staff members of the yearbook and the newspaper will enable them to produce quality publications," Littleton stated.

Littleton replaces Sherwin Clift, Director of Public Information, who resigned to devote more time to his department as well as the men's golf team which he now coaches.

## Saga food services get atmosphere

"I think we can finally offer the students a good meal with a comfortable atmosphere," said Paul Knight, director of Saga Food Service. "This meal will be a way of improving the standard of living on campus."

This comment came after an impressive summer of work and planning which was aimed at improving the food service at Austin

Peay, Knight pointed out many new things which have taken place.

The most notable of the new moves is the remodeling of the Catherine E. Harvill Cafeteria as the building took on a new look inside and outside.

The kitchen area was the biggest improvement as new equipment in almost every area of food

production was brought in to give a better service to the university.

The new cafeteria hours were developed to help accommodate more students. Breakfast times have been increased by one half hour to let students have more sleep time. In addition to that a continental breakfast will be served until 10 a.m. Lunch will be served from 11 a.m. until 1 p.m. with a continental lunch being served until 3 p.m. Dinner time will be 5 p.m. until 8:30.

The meal ticket situation remains about the

same with Knight stressing the fact that a meal ticket will save the students money. The price of a ticket is up about 8 percent, but Knight stated that this was two percent less than the inflation index listed by the government.

If a 19 meal ticket plan is purchased by the student, the average day of meals would cost \$3.12 while the 15 meal plan would run \$3.08 per day. Knight went on to say that the 21 meal plan is no longer offered since the food service combined breakfast and lunch on

the weekend for a two hour brunch.

The special activities will still be held as October will be highlighted by a Halloween party for the campus while Thanksgiving will be celebrated by a big dinner on that particular day. Christmas will be another big event for Saga during the fall quarter.

"We have had so little for so long," Knight concluded. "We have so much now that it is a real nice feeling."

Saga will have the new meal ticket plans on sale at various places on campus for the first few weeks of classes; however, there is a deadline for the purchase of meal tickets for the fall.

Why go to the library for the  
**Clarksville Leaf-Chronicle**  
when you can have it delivered for only  
\$3.90/month.



Clarksville Leaf Chronicle  
552-1808

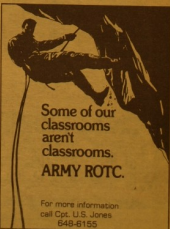
## Inn-troducing the new Super Salad Bar.

Pizza Inn features the new Super Salad Bar. Try it... We've got a feeling you're gonna like it.



1068 Riverside Drive  
648-1106

**Pizza inn.**  
"We've got a feeling you're gonna like us."



Some of our classrooms aren't classrooms.  
**ARMY ROTC.**

For more information call Cpt. U.S. Jones  
648-6155

## Fall rush

The Austin Peay Panhellenic Council kicked off this year's Fall Formal Rush on Sunday evening with the traditional Greek Tea hosted at Archwood, by the president's residence, by Mrs. Judy Riggs.

Mrs. Kathy Williams, an alumnae member of Alpha Gamma Delta Fraternity, spoke to the sisters and rushers at the meeting preceding the Tea.

First round parties begin tonight, September 18. Any girl interested in joining the rush activities who did not meet with Mrs. Phyllis Virnum, panhellenic adviser, tonight at 5:30 p.m. in the lobby of Harward Hall.

The sisters of Alpha Phi, Chi Omega and Kappa Delta want all interested female students interested in the Greek system to join in the rush.

## TM lecture

Austin Peay's chapter of Students' International Meditation Society will conduct introductory lectures after registration.

On September 25, the organization of student practitioners of the Transcendental Meditation technique operates differently from most campus groups. It offers a popular mental technique to improve one's health and mental potential.

Four-day courses of instruction are offered regularly and result in ongoing membership status at any college or TMI center. There are no quarterly or yearly dues, only the one-time course fee for those not already instructed.

Meetings provide a format for discussion of experiences and answers to questions about the mechanics of TM and the process of growth. Taped lectures by Maharishi Mahesh Yogi, founder of the TM program and Science of Creative Intelligence, often highlight these advanced lectures.

The first lecture will be held in the library basement in Room 38. This meeting is open to anyone at the university.

## Master of Arts

A master of arts in education degree with a major in reading has been approved for Austin Peay State University by the Tennessee Higher Education Commission.

This program begins at the outset of the upcoming fall quarter. Registration is scheduled for Wednesday, September 20.

Applications will be received until September 22, however, and late registration will be Wednesday, September 27.

The new degree program will prepare reading specialists for public schools and for community college and junior college teaching positions.

Competencies in developmental reading instruction, diagnosis of reading difficulties, diagnostic and clinical teaching of reading, supervision of public school reading program and critical analysis of reading research will be stressed to coincide with the guidelines of the International Reading Association.

Positive results of a regional survey for the need of and interest in

such a program helped bring about the initiation of the program.

Applications may be secured from the Graduate Office.

## Center named

The student union building at Austin Peay State University was officially named The Joe Morgan University Center by action of the State Board of Regents at its regular meeting June 30, at Cleveland State Community College.

Dr. Morgan served as president of AFSU from January 1, 1963 until January 12, 1978.

The regents approved the request of the university that the

structure, opened in February 1968, bear Morgan's name.

A three-story, marble-chip building, the Joe Morgan University Center was built at a cost of \$1.1 million. The center is the hub of activity for the university's 5,000 students.

## Grad school

All persons planning to complete the requirements for any degree by the end of the summer of 1979 should make the required application now. Undergraduate applications are available in Office of Admissions and Records; graduate applications are available in

the Graduate School.

Comprehensive Evaluations will be given October 20 - November 2. Final checkouts for those graduating this quarter are due no later than September 29.

Evaluations of transfer credit and armed service records will be given October 30 - November 15.

## Homecoming

Get out your saddle shoes, slick back your hair, put on your long skirts and get that Saturday night fever and "Start Planning Now to Get Involved in Homecoming 1978." This year's theme is a "Rocking and Rolling Homecoming." The

parade entries, the residence hall decorations and the general atmosphere on campus will be one of "Rock and Roll." More information, entry forms and directions for all activities will be sent later. Suggestions and questions should be directed to Mildred Deason, Office of Student Life (7451).

## ads

Last items may be claimed at the information desk at the University Center. Pairs of glasses and articles of clothing have been turned in.

IMPROVE YOUR GRADES Now! In your 200-page, read-and-understand of College Grade Research, 10,000 hours based. Prompt Delivery Box 20007-R, Los Angeles, Calif. 90028. (213) 477-0238.

**60 MINUTES**

**That's a lot of long distance talking for only \$7.50 a month.**

South Central Bell's new budget plan Tel A Thrift gives you a full hour of long distance calling every month, anywhere within Tennessee, for a monthly rate of only \$7.50. And additional 6 minute periods are only 75¢ each.

You can use Tel A Thrift for as few long calls each month or as many as 60 one minute calls. One minute is the minimum. It's a great way to check up on lots of friends. And check in with your parents, too.

Tel A Thrift is available with your residence phone if you live off campus, or with your dorm phone if you have a STAN account. The plan applies to calls you dial 1 + any night between 11 pm and 8 am, anytime Saturdays and Sundays till 5 pm. It's ideal for calling forty or more miles away, the farther away you call the more you save. In fact, Tel A Thrift can help you save as much as one half the already low night and weekend rates.

Call the South Central Bell Business Office and ask about Tel A Thrift. It's the bargain way to keep up with the times with Tennessee family and friends.

## NEED A HOME?

**HARRIS REALTY has Rentals -- furnished and unfurnished.**

**For more information, call - or visit - a HARRIS office.**

**Ft Campbell Blvd  
647-8342  
1500 Madison St.  
647-2338**

**harris**  
REALTY

**HEADQUARTERS FOR HOUSING**

## TELA-THRIFT

THE BUDGET PLAN FOR LONG DISTANCE CALLING WITHIN TENNESSEE



**South Central Bell**

# Woodward Library: Introducing a

Newcomers to Austin Peay State University will learn that the Felix G. Woodward Library is a necessity for successful and serious study. In order that maximum use may be made of the facility, the staff of the Woodward Library has compiled this brief guide to answer questions which may arise sometime during the school year.

## New Library Arrangement

During the summer interim, the library staff has been busy relocating materials, particularly on the first floor. These changes occurred because of a need to provide more space for rapidly growing collections (such as periodicals).

Materials were arranged awkwardly and a change was needed to create a more functional library.

While the new arrangement is not the best of all possible worlds, one will find the library easier to use, more responsive to one's needs for assistance, and quieter. These

changes should be the last major ones before an additional floor is occupied.

While it might be easier to see the changes by strolling around the library, it would be easier to summarize the changes and refer you to the diagrams. More information on the changes discussed here is provided in the alphabetical section that follows.

1. The Reference Collection and the Information Desk are now located in the middle of the first floor.

2. Current issues of periodicals (except for the Browning Periodical Collection) have been placed on the shelf with the bound volumes of the same title in the back of the first floor.

3. Microform (microfilm, microfiche and microcard) has been moved along with the microform readers to two locations in the back third of the first floor.

4. The Tennessee Room at the top of the main stairs on the second floor has held the bulk of its collection removed to the regular book shelves on

the second floor.

5. The separate Government Publications Collection is located at the front on the second floor.

6. Periodical indexes and abstracts have been located between the Reference And Periodical Collections on the first floor.

7. The photocopies have been brought together in the Browning Area near the library entrance.

8. Typewriters are now checked out at the Reserve Desk on the first floor and space for typing has been moved to the room adjacent to the Browning Area on the first floor.

9. Some sections of book shelving have been moved into line with the other main shelving rows on the second floor.

## Browsing Area

This area near the library entrance is designed for taking breaks from studying. It is the only area on the first floor where smoking is permitted. Located within the area is lounge furniture as well as these Newspapers (current

issues), current acquisitions, contemporary reading, and browsing periodicals. The library's photocopies are located on the wall bordering the browsing area.

## Browsing Periodicals

Current issues of approximately 125 popular magazines, such as *Newsweek*, *Punch*, or *Ms.* are located in the middle of the browsing area on the first floor. Bound issues of these periodicals are housed in the regular periodicals collection in the back third of the first floor. If a student should have difficulty locating a particular issue he should check at the periodicals or Information Desk.

## Card Catalog

The card catalog, located near the library entrance between the Reserve and Information Desks, is the index to the book and media collection. This library tool allows material to be located by author, title, or subject and provides the call number which is the material's "address" within the library. The card catalog is not always an easy library tool to use, so students are encouraged to ask for assistance at the Information Desk if any difficulties should arise.

## Checking Materials Out

If one wants to take some library material out of the library, one must check it out at the Circulation Desk, located near the exit. A validated identification card should be presented to the circulation staff member and who will record this on the check out card and stamp the book in the back with the date it is due back. If reference material or periodicals are needed overnight or for class use, get a loan slip approved at the Information Desk before bringing the material to the Reserve Desk.

Books from the general book collection, located on the second floor, may be borrowed for three weeks. Items from the Media Collection may be

borrowed, records for one day, filmstrips for three days, and special arrangements may be made to borrow films.

Overnight loans of reference materials or periodicals may occur during the hour before closing and are due an hour after opening the next working day. Reserve materials and Government Publications may be borrowed.

Failure to return materials on time will result in overdue book fines of five cents a day for regular loans and ten cents an hour for Media or periodical materials. Materials may be returned at the Reserve Desk or at either of the book drops located on the exterior of the library. If a book is lost, report it at once to the Circulation Department to prevent overdue fines from being added to the replacement charge. Failure to pay overdue fines or replacement charges may result in turning the matter over to the Business Office for collection.

## Circulation Desk

The Circulation Desk is located at the library exit to facilitate checking materials out and to determine that materials are properly changed out before leaving the building. Since the Circulation and Reserve Desks are located together and are staffed by the same group of staff members, questions may be asked about checking out procedures, date due, whether a book has already been checked out or for assistance in locating some material from anyone at either desk.

## Computer Searches

Because many periodical indexes and abstracts are produced by computer, their data base is machine searchable. In cooperation with the North Carolina Science and Technology Research Center, the Woodward Library is offering a low-cost computer search for students of these data bases: Educational Resource Information Center (ERIC), "Resource in Education" and "Current Index to Journals in Education".

National Technical Information Service (NTIS: "Government Reports Abstracts and Index"), and National Aeronautics and Space Administration (NASA).

These searches are prepared by the library staff, submitted to NC/STRC for processing and the completed bibliography is mailed to the library for distribution. In addition, a student can request a search of most of the other major data bases: "Chemical Abstracts", GEOREF, "America: History and Life; Science Citation Index"; "Psychological Abstracts," etc. Interested students in either type of search should contact a staff member at the Information Desk.

## Information Desk

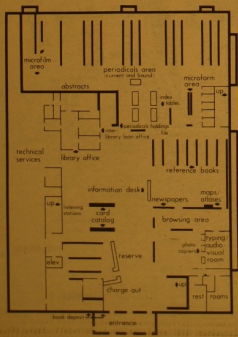
This desk, located in the middle of the first floor, is staffed with people whose purpose is to provide or help find the information needed. If difficulties occur with any library tool (such as the card catalog, periodical indexes, etc.) or with and library resource, as for assistance at the Information Desk. Trained, and experienced workers usually will allow students to wake time when saving time in the library.

## Interlibrary Loan

Serious research requires a vast amount of material. If a vital book or article is not available at Woodward Library, the staff may be able to borrow the item from another library. This form of interlibrary cooperation is available for APSU faculty and students upon filling out a loan application, available at the Information Desk. The library should be given two and a half weeks to get the material.

Some materials cannot be borrowed, but may be available as photocopies or microfilm. Costs for the service change by the lending library and the responsibility of the individual borrower. Once material has arrived, the borrower is notified and it is available in the Interlibrary Loan office.

## first floor





# new look and feeling for Austin Peay

near the middle of the first floor.

## Map Collection

The library is starting a map collection by bringing together maps which previously have been in several locations. In addition to this, the library designated a U.S. Geological Survey map depository so their maps can be received as they are published. The map cases are located between the browsing area and the Reference Collection on the first floor. Assistance using maps may be found at the Information Desk.

## Media Materials

The library has an extensive audio-visual collection consisting of records, cassette tapes, films, filmloops, filmstrips, transparencies as well as the equipment to use the media. All of this is available for use at the Reserve Desk near the library entrance. The Reserve staff has printed bibliographies of media materials or one can locate them through the card catalog. If assistance is needed locating or using media materials, ask at the Reserve Desk.

## Microform Collection

The library has extensive holdings in reels of microfilm, sheets of microfiche, and even a few microcards which collectively are called microform. These materials share the fact that original printed material is reproduced in reduced size so that a mechanical reader is necessary to use the material. The library purchases microform when it is the only way to keep material (such as newspapers), when a periodical title takes considerable shelf space or when rare material is too expensive to acquire any other way. A reader-printer is available at the Reserve Desk which can make paper copies of microform material for ten cents a page.

Periodical and newspaper microfilms and microfiches have been moved, along with two microfilm readers, to the space near the

beginning of the Periodical Collection in the back third of the first floor. Other microform, including the ERIC microfiche collection, is housed between the Reference and Periodical Collections on the first floor. Adjacent to this collection are individual rooms where microform readers are available. Assistance with the microform collection is available at the Information or Periodical Desks.

## Newspapers

The library subscribes to a number of Tennessee, other American and foreign newspapers. Current issues are located in the browsing area, a number of which are retained until the microform arrives. Newspaper indexes we have are located in the index area between Periodicals and Reference Collections on the first floor.

## Restrictions

While it shouldn't be necessary to remind users that things such as food, noise, smoking or vandalism must be controlled within the library, there are a substantial number of users that haven't gotten the word. This section will be as brief as possible.

1. There is no place in the library where consumption of food or drink is allowed.

2. Please avoid disturbing others, by reserving a study room if you need to talk quietly when you study, or by adjoining to the University Center.

3. Smoking is only allowed in the browsing area on the first floor and in the lounge and group study rooms on the second floor.

4. Ripping out pages from library books and periodicals not only decreases the usefulness of the library collection but also frustrates the next user, and is expensive to remedy.

## Periodicals

A substantial portion of any library's holdings is its periodicals collection. Woodward Library receives over 1700 journals and magazines most of

which are retained permanently in bound volumes or in microfilm. Both current issues and bound volumes are located together in volume number order, with the exception of the magazines kept in the browsing periodical collection. The Periodical Collection is located in the back of the first floor arranged alphabetically by title.

To determine if the library subscribes to a particular periodical or have a particular issue, consult the periodical holding file, located near the Index Table Area. This file will not only answer the questions mentioned above, but also indicate what holdings are in microform and what are unavailable due to binding.

## Photocopies

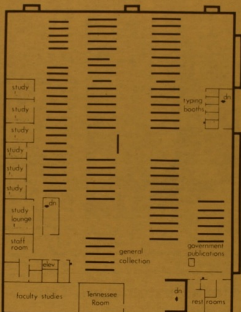
The library's photocopiers are located in the browsing area near the library entrance. The copiers make either regular size (8 1/2" x 11") or legal size (8 1/2" x 14") copies for five cents each. The machines are coin-operated and can make change, but if you need to make a large number of copies you should ask at the Reserve Desk for a copier meter and pay for the copies after you have finished. Paper cutters and a collating table are available adjacent to the photocopiers.

## Reserve

The Reserve Collection, located near the library entrance, is designed to make materials which faculty members have selected available for shorter periods of time than would be possible with regular loans. There is a file on the Reserve Desk listing materials held on reserve (arranged by academic department) and books placed on reserve are marked with black overlays in the card catalog. Items need to be requested and a staff member will retrieve it.

The charge out period for reserve materials varies. There are hourly loans (to be used within the library), on day loans, three day loans, and

## second floor



seven day loans. The staff member that checks the reserve material out will indicate when it is due and stamp a colored due slip. The fine for returning Reserve materials late is ten cents an hour. If you have any questions about these materials, ask at the Reserve Desk.

## Telephone Information Service

Many people are apparently unaware that short, quick-answer questions may be asked by telephone. The telephone number is 648-7346 and the password is "Reference." Information Desk staff will try to answer if possible within a few minutes.

## Tennessee Room

Most of the material that people traditionally have checked out from the Tennessee Room has been moved to the regular stacks. What remains are university archives, special collections, and rare and/or irreplaceable materials on Tennessee history. All of the material that is indexed in

the card catalog has the special location stamp "Tenn." The Tennessee Room is locked to protect these materials, and assistance with the Tennessee Room collection is available at the Information Desk. Tennessee Room materials are to be used in the library.

## Typewriters

The typewriters available for student use, including a few electric, have been moved to the Reserve Desk. To use a typewriter, a student must present a valid ID card and a Reserve staff member will check it out for in-library use. The typing booths on the second floor have not been changed, but there is a new typing area on the first floor, near the browsing area. Difficulties with the machines must be reported.

## Group Study Room

If one needs to study with some classmates and discuss the subject, go to the Reserve Desk and ask to use a group study room. These rooms on the

second floor, are available on a first-come-first-served basis unless previously reserved. The group study rooms are not designed for regular classes or meetings of clubs, they are for group meeting a place to study.

The library can be a large part of a college education. Students can use the facility as often as needed. This house of learning has an unlimited supply of knowledge.

## Contemporary Reading Collection

Recognizing that library users may occasionally want a break from class-oriented reading, there is a collection of approximately 300 popular fiction and non-fiction books for recreational reading located in the browsing area. Since there is a rapid turnover in this collection's use, books may be checked out for up to three weeks with no renewals. The check out procedure is the same as for regular books, and if a certain popular book is out, the Reserve staff will

(cont. on page 7a)



MOVING IN — Gail Gilmer is assisted by her mother, Jean, as she moves into the dorm for the first time.

Robert Smith

## Registration explained

The Office of Admissions has recently been flooded with persons with questions concerning preregistration and late applications for admission to the university, according to Ellen Murphy, Assistant Director of Admissions at Austin Peay State University.

Any student wishing to change the schedule he prepared at summer preregistration may do so on the day of registration. Any card which was picked up during summer preregistration but which will not be used should be returned to the card bank. At the same time, new course cards may be picked up for classes the student wishes to add to his schedule.

Any student who preregistered during Spring quarter and wishes to change his schedule should follow the instructions for Group II in the Schedule of Classes—Fall of 1978.

New students who filed an application for

admission to the University after August 31 are classified as late applicants and must follow special instructions for registration. All late applicants are encouraged to have their trial schedules approved by an advisor, receive an advisor's card and pick up course cards between 8:15 a.m. and 6 p.m., Wednesday, September 20 in the

Dunn Center.

All students are to begin attending classes on Thursday, September 21.

The Office of Admissions will continue accepting applications for admission through Friday, September 22, at 4:30 p.m. If class cards are not picked up on September 20, they may be picked up in the academic department's September 21

through September 27. The student should begin attending classes immediately after securing class cards and should complete registration on Wednesday, September 27.

Questions concerning registration or admission to the university should be directed to the Office of Admissions at Austin Peay.

## Counseling session forming

Offered to you by the staff of the APSU Counseling Center each Tuesday and Thursday of Fall quarter in the Joe Morgan University Center. Everyone is invited to attend any or all of the program.

Tuesday, September 26, 11:30 a.m.—Human Sexuality Part I: Attitudes of College Students, film "The Sexually Mature Adult", and discussion for mature audience only.  
Thursday, September 28, 11:30 a.m.—Human Sexuality Part II: Contraception, film and discussion with counselors from the Family Planning program of the County Health Department, for mature audience only.

Tuesday, October 3, 11:30 a.m.—Human Sexuality Part III: Venereal Disease, film and discussion with members of the Venereal Disease Clinic, for mature audience only.  
Thursday, October 5, 11:30 a.m.—Undecided About College Goals? We

can help.

Tuesday, October 10, 11:30 a.m.—How to Live with Your Roommate.

Thursday, October 12, 11:30 a.m.—How to Live with Your Parents While Going to College.

Tuesday, October 17, 11:30 a.m.—College Depression and Suicide: Maintaining a healthy attitude and helping your friends.

Tuesday, October 31, 11:30 a.m.—Drugs and the College Student.

Thursday, November 2, 11:30 a.m.—Drinking and the College Student.

Tuesday, November 7, 11:30 a.m.—Being Married While in College: Conflicts and Issues.

Tuesday, November 14, 11:00-1:00—Job Hunting Workshop.

Thursday, November 16, 11:00-1:00—Job Hunting Workshop.

Tuesday and Thursday, November 28 and 30, 11:30 a.m.—How to Study for Finals.

### Kim's Custom Auto Trim

Complete Auto & Boat Upholstery

1180 Ft. Campbell Blvd.  
Clarksville, TN 37040

Kim Smith, Owner

PH: (615) 552-3012



used paperbacks

supply limited

half price



Want to avoid the long lines?  
check the

**SGA BOOKSTORE**

for used paperback books

Ellington Hall • Open 8-5

**Chi Omega**  
**WELCOMES**  
**Incoming Freshmen**

Panhellenic Council invites you to

**GO GREEK**

Sign up September 18

**Harned Hall Lobby**

5:30 P.M.

Monday, Sept. 18, 1978



Delicate Woodwork

**TIMBERRRR...** When bookshelves start falling there is no way to stop the "domino effect" from occurring. The Woodward Library was the scene of this "minor" catastrophe.

## Woodward

place the student's name on the waiting list.

### Reference Collection

To enable the staff at the Information Desk to provide assistance to the library users there is a special collection of non-

circulating materials near the middle of the first floor. All books in the Reference Collection are identified in the card catalog with a "Ref" over the call number and these may not be checked out except for overnight or

class use, with the approval of a Reference staff member. The Reference Collection is arranged by call number and for assistance in the use of reference materials ask at the Information Desk.

(cont. from page 5a)

## WHO'S WHO IN WOODWARD

Library Director  
Reference  
Circulation  
Periodical  
Acquisitions  
Cataloging  
Media Center

Robert H. Simmons  
William O. Van Arsdale  
Joe Hines  
Carol Kientzelman  
Mrs. Janie Gentry  
Elnor McMahon  
Dr. T. David Seiber

## I'M HUNGRY

MAIL OR DELIVER THIS COUPON RIGHT NOW

To: Please check payable to Saga Food Service, Attn: Payee, State University, Campus, Lawrence, 37040. Fill out coupon below and mail with check.

From: Name \_\_\_\_\_  
Address \_\_\_\_\_  
Class: Fr \_\_\_\_\_ Soph \_\_\_\_\_ J \_\_\_\_\_ Sr \_\_\_\_\_

10 MEAL DEAL 10 meals over 7 days	\$27.94 plus tax (\$8.32)	\$36.26
10 MEAL DEAL 10 meals over 7 days	\$27.94 plus tax (\$8.32)	\$36.26
10 MEAL DEAL 10 meals over 7 days	\$27.94 plus tax (\$8.32)	\$36.26
Coupons Book all 10	\$22.80 plus tax (\$8.32)	\$31.12

## LIBRARY SCHEDULE, 1978-79

Regular library hours, in effect while classes are being held, are as follows:

7:30 a.m. - 10:00 p.m.  
Monday-Thursday  
7:30 a.m. - 5:00 p.m.  
Friday  
10:00 a.m. - 5:00 p.m.  
Saturday  
3:00 p.m. - 10:00 p.m.  
Sunday

Notice of changes will be prominently posted whenever they occur. Library hours will be reduced during between-quarter breaks, as follows:

Monday-Friday  
8:00 a.m. - 4:30 p.m.

The library also closes for all official holiday, with the exception of the Sundays at the end of the Thanksgiving and Easter vacations.

### Fall Quarter

September 21 Thursday  
November 4 Saturday  
November 22 Wednesday  
November 23-25 Thursday-Saturday  
November 26 Sunday  
December 14 January 3

Regular library hours  
Closed for Homecoming  
Closing time 4:30 p.m.  
Closed for Thanksgiving  
Open regular Sunday hours  
Reduced hours during between-quarter break, except closed for December 25-29 (Christmas) and January 1 (New Year's Day)

### Spring Quarter

March 22 Thursday  
April 12 Thursday  
April 13-14 Friday-Saturday  
April 15 Sunday  
May 31-June 14

Regular library hours being  
Closing time 8:00 p.m.  
Closed for Good Friday-Easter  
Open regular Sunday hours  
Reduced hours during between-quarter break

### Winter Quarter

January 4 Thursday  
March 15-21 Thursday-Wednesday

Regular library hours begin  
Reduced hours during between-quarter break

## If you don't always cook when you're cooking.



LET US DO IT FOR YOU!  
BUY A MEAL PLAN FOR NEXT SEMESTER. YOU'LL SAVE TIME AND MONEY — PLUS YOU CAN GO BACK AS OFTEN AS YOU LIKE FOR SECONDS ON SALADS, MILK, DESSERTS AND MOST ENTIRE MEAL PLANS ARE NOW AVAILABLE TO EVERY STUDENT — WHETHER YOU LIVE ON OR OFF CAMPUS. CHOOSE A 15 MEALS A WEEK PLAN, OR THE REG. 24 MEAL PLAN. THIS WAY, YOUR MEALS WILL COST YOU AS LITTLE AS \$1.15 EACH SO, BE GOOD TO YOURSELF NEXT SEMESTER. SIGN UP AND DISCOVER.

Saga Food Service

## Have we got a Meal for YOU!

# "LAUNDROMATS"



## YOUR TIME IS VALUABLE

## WASH AND DRY YOUR WHOLE WEEK'S LAUNDRY IN LESS THAN AN HOUR

THIS WEEK'S SPECIAL 2 LOADS FOR THE PRICE OF 1

### 7 LOCATIONS

#### Riverside Drive

1043 Riverside Drive (In Front of Big K)

#### Hilldale

313 Drinkards (Behind Eastgate Bowling Lanes)

—OPEN 24 HOURS—

#### New Providence

206 Walnut (Behind People's Oil Company)

—OPEN 24 HOURS—

#### St. Bethlehem

Highway 79 (Next to Bunny Bread)

—OPEN 24 HOURS—

#### St. Bethlehem Plaza

Highway 79 (Behind Kelly's Restaurant)

#### Commerce Street

(Behind Dalton World of Carpets)

#### 9th Street

(Behind Kelly's Food Market)

## BRING YOUR ROOMMATE

**ONE FREE WASH  
WITH  
COUPON**

Must Show APSU ID

Limit 1

## DOLLAR BILL CHANGERS ATTENDANT ON DUTY