

# Table of Contents

<b>Executive Summary .....</b>	<b>1</b>
Summary of Recommendations.....	1
Current System Problems.....	1
Approved System Objectives .....	2
Report Contents .....	2
<b>Detailed Hierarchy Chart .....</b>	<b>4</b>
Hierarchy Chart .....	5
Hierarchy Chart Description .....	27
<b>Entity Relationship Diagram .....</b>	<b>31</b>
<b>Detailed Table Descriptions .....</b>	<b>35</b>
Rapid Response Database Tables.....	36
Detailed Table Descriptions .....	38
<b>Detailed Screen Layouts.....</b>	<b>57</b>
<b>Detailed Report Descriptions.....</b>	<b>185</b>
<b>Appendix .....</b>	<b>202</b>
Memorandum .....	203
Questions and Answers from Contact Meeting.....	205
Task Assignment List .....	210
Design Phase Meetings.....	214

# EXECUTIVE SUMMARY

## Summary of Recommendations

After Rapid Response Auto Service accepted the proposal of JK Designs we are now moving forward to the Design Phase of the project. The new system will allow the company to keep up to the minute records on each customer, their vehicle/vehicles, the work performed on the vehicle/vehicles, product supply and demand, and payments received from the customers. The approved system will also allow Rapid Response Auto Service to keep accurate records of current discounts along with each discount's expiration date. The approved system will improve not only the time that is currently spent servicing the vehicles but will also improve the daily operation of the business. The members of JK Designs are confident that the system we are designing will continue to support the present and future needs of Rapid Response Auto Service.

## Current System Problems

- With the current system, there is no way for the company to effectively keep a record of the discounts that are offered and the expiration dates of each.
- The company is unable to keep updated records of the customers and their vehicle/vehicles to notify the customer of recommended manufacturer services at specified mileage points.
- The company's current method of ordering needed items is not effective.
- The amount of time spent servicing a vehicle is unacceptable.

## Approved System Objectives

- The proposed system will improve record-keeping on not only the customers but also the employees. Business related issues such as discounts, employee workload, and part replacement will also be addressed.
- The new system will give the company employees the ability to service the vehicles in a more efficient and timely manner.
- The new system will allow the company to stay stocked with needed items so that they can operate smoothly on a daily basis without the worry of running out of replacement parts.

Since the company does not have any particular up-to-date system in place, the opportunities for this project are limitless. JK Designs is dedicated to designing a system that will not only address each of the company's current problems but to also creating a system that is highly functional and easy to learn and operate.

## Report Contents

- Detailed Table Descriptions

The detailed table descriptions will explain each table that is being used in our system. The field name will provide the name of each field while the description will give a more detailed explanation of the purpose of each field name. This section also includes the Entity Relationship Diagram (ERD) that explains how the tables are connected.

- Detailed Hierarchy Chart

The hierarchy chart shows the tasks of the system. Our system is designed based on the hierarchy chart that is included.

- Detailed Screen Layouts

The detailed screen layouts will show each interface that is included in the system. A description will be provided describing how each field causes the program to react given the input from the user. This section also shows the correlation between the forms and the tables.

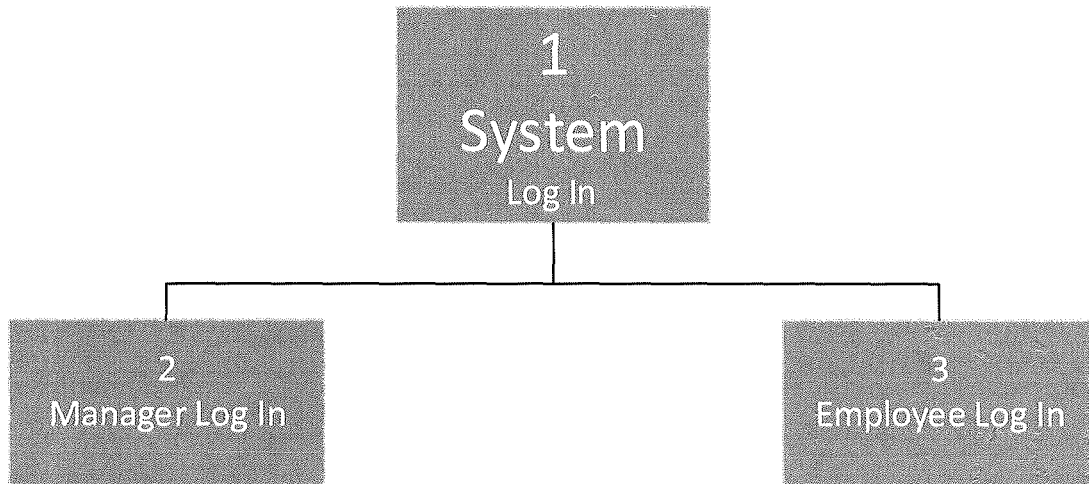
- Detailed Report Descriptions

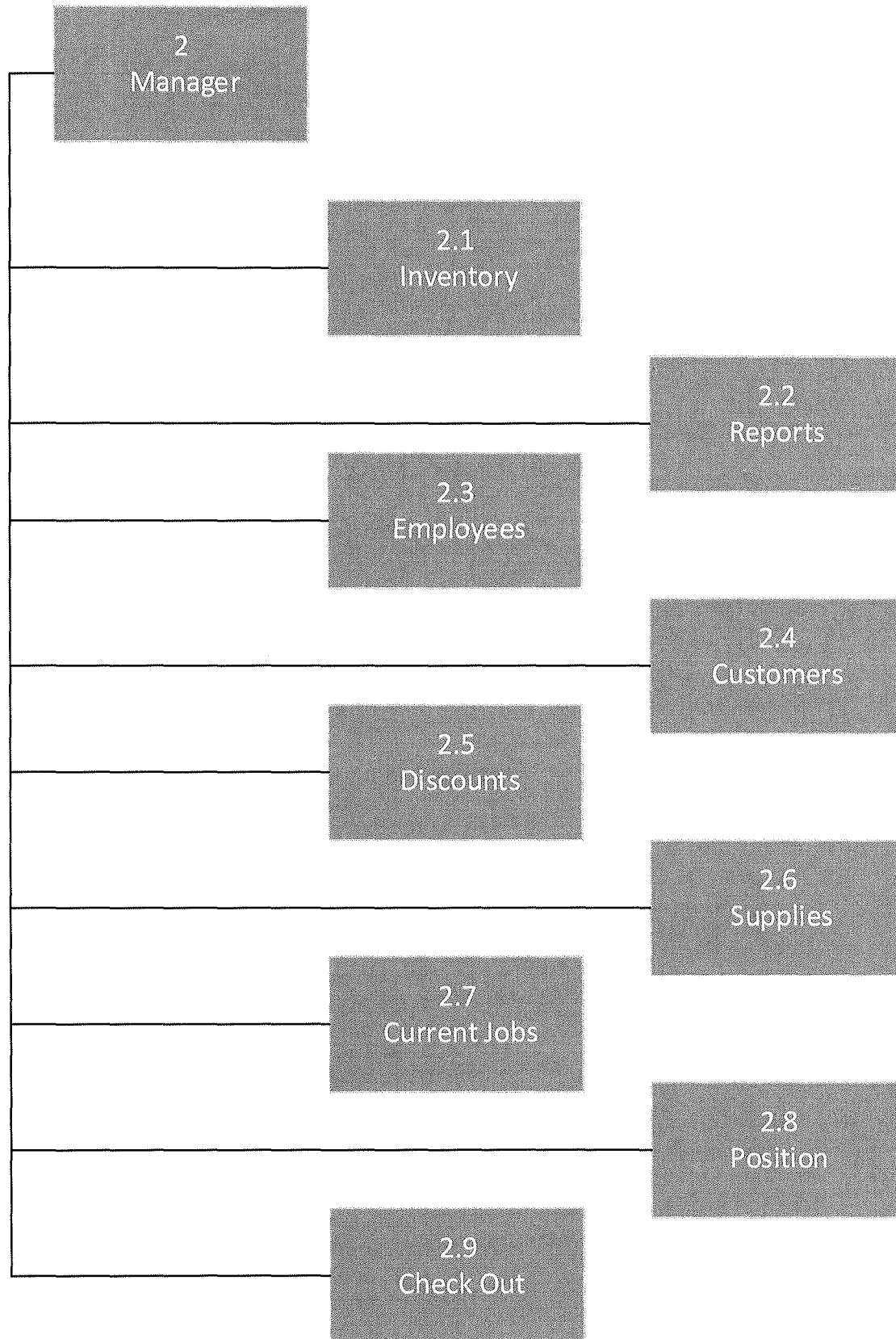
The detailed report descriptions show the information that has been inputted from the user. Daily, Weekly, Monthly, and Yearly Reports are included. These will show how well the company is performing at certain intervals.

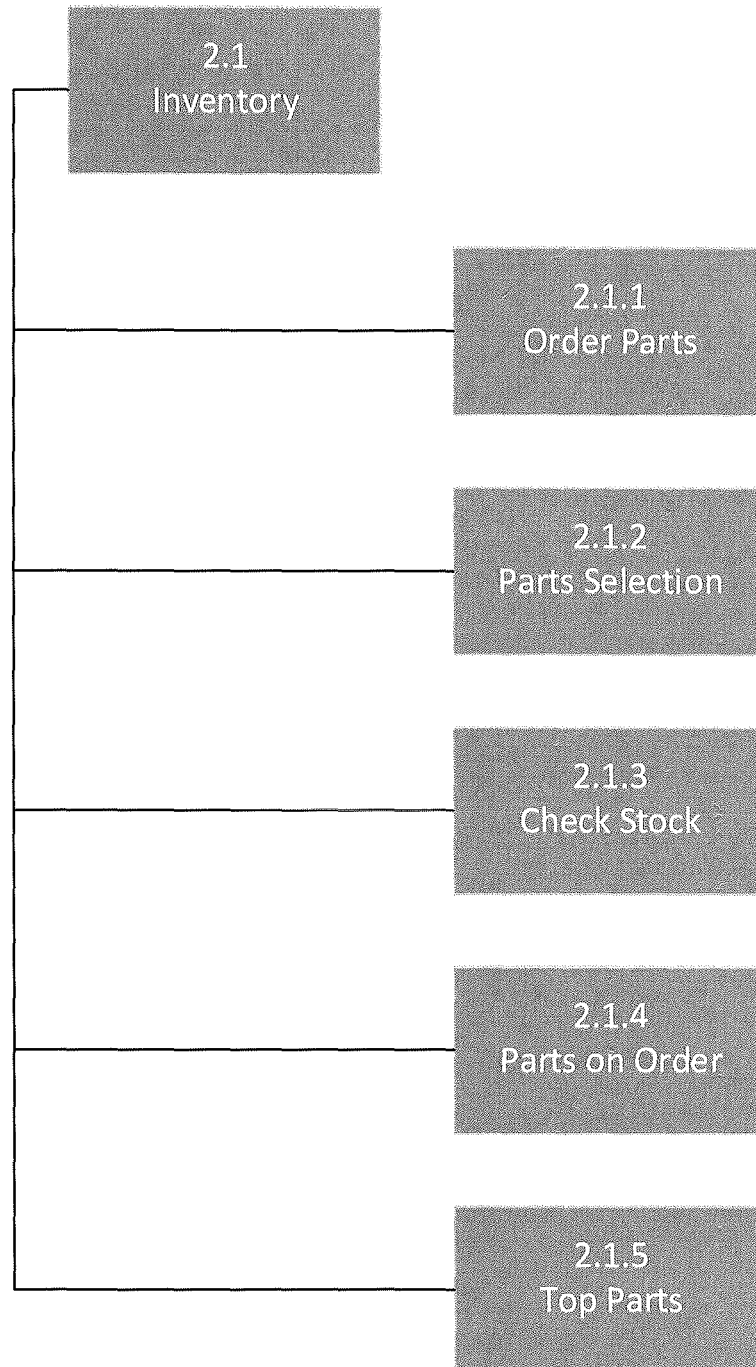
- Appendix

The appendix contains the original Memorandum from Rapid Response Auto Service. Also included is the assigned task list of all team members. The meeting dates, times, and places for this phase is also included.

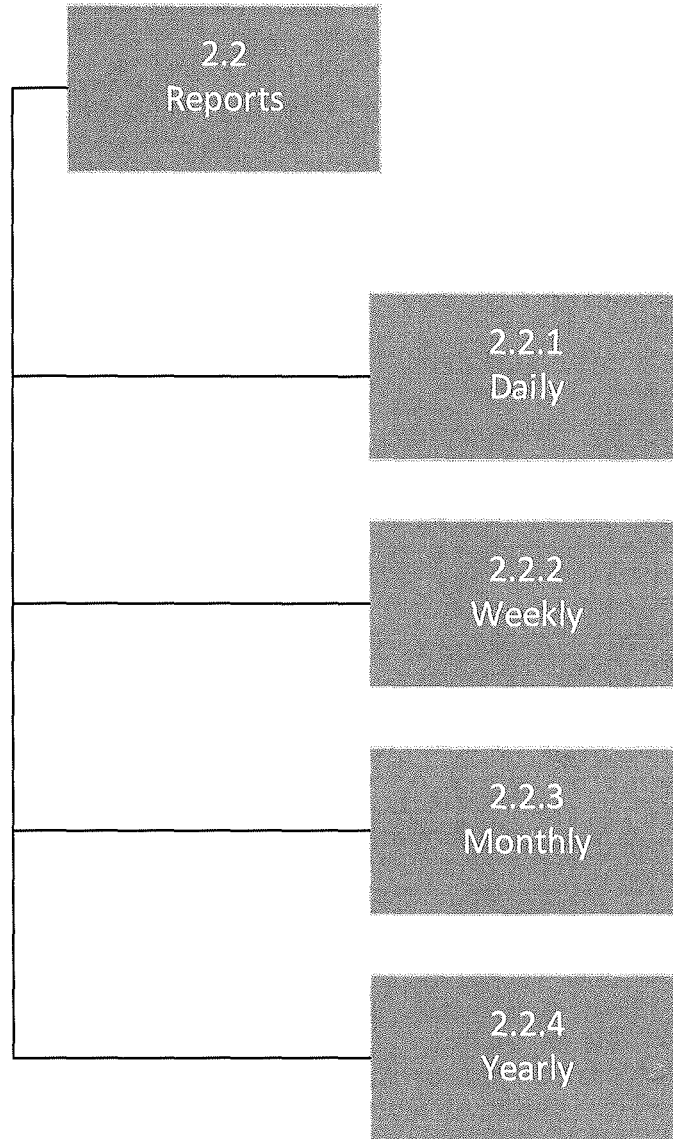
# DETAILED HIERARCHY CHART

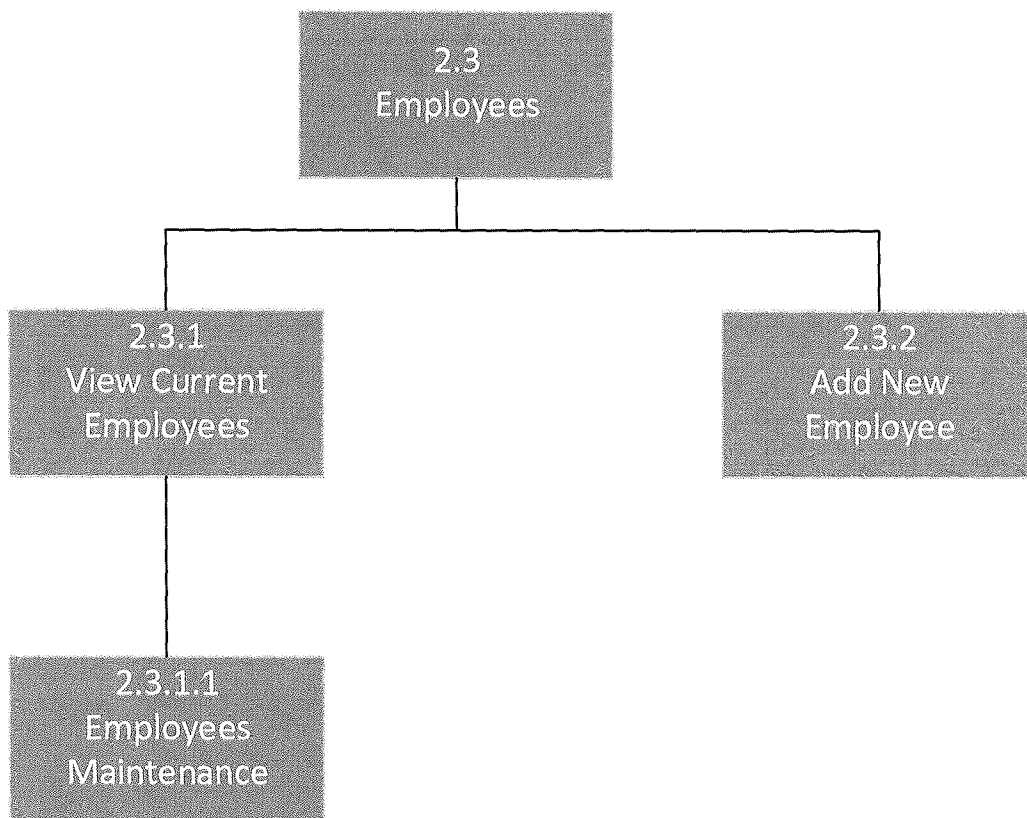


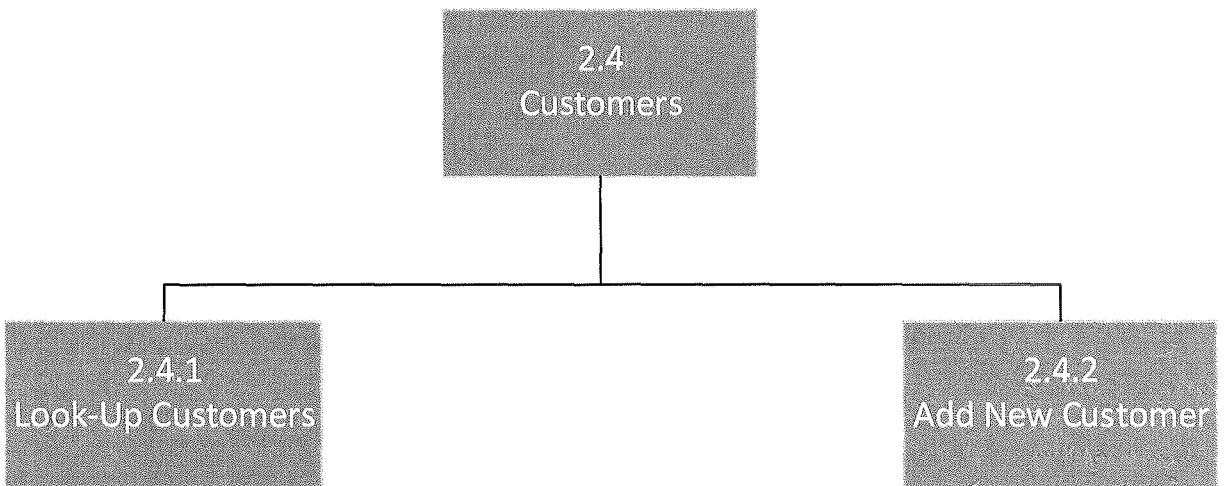


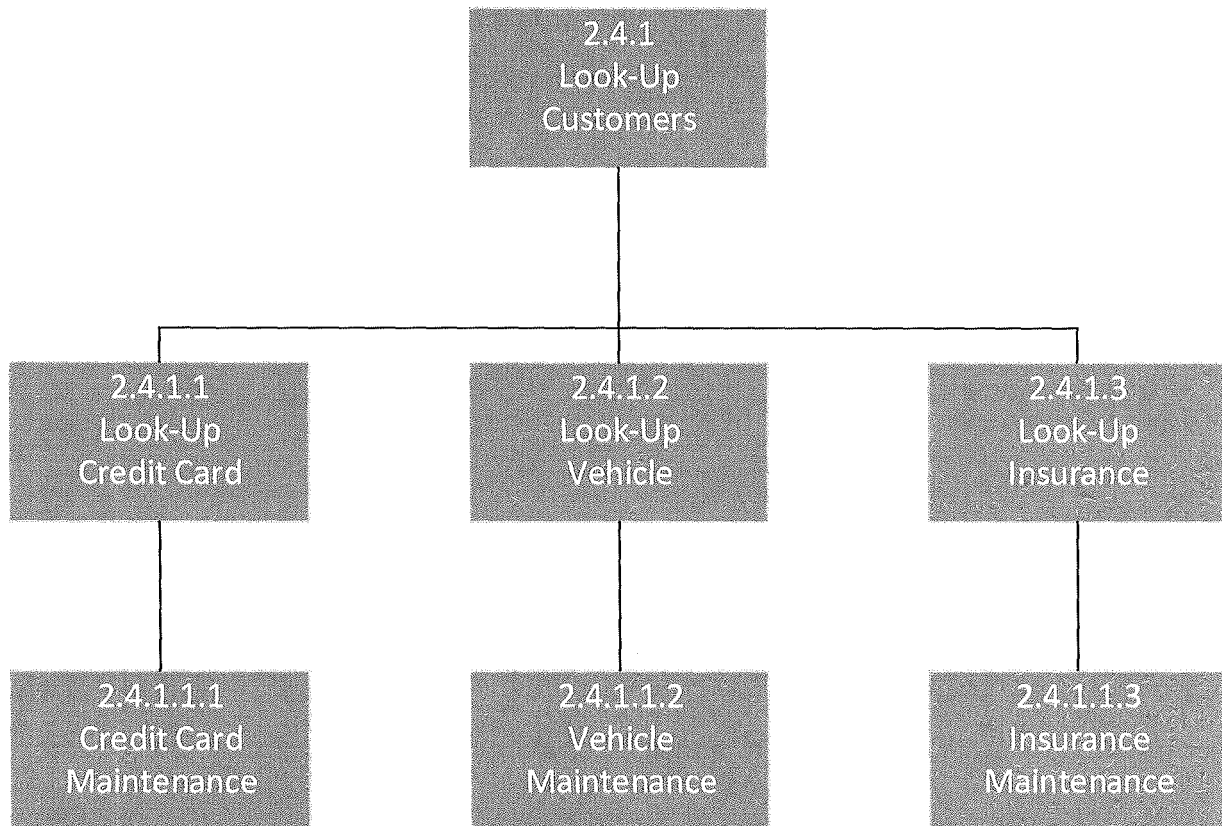


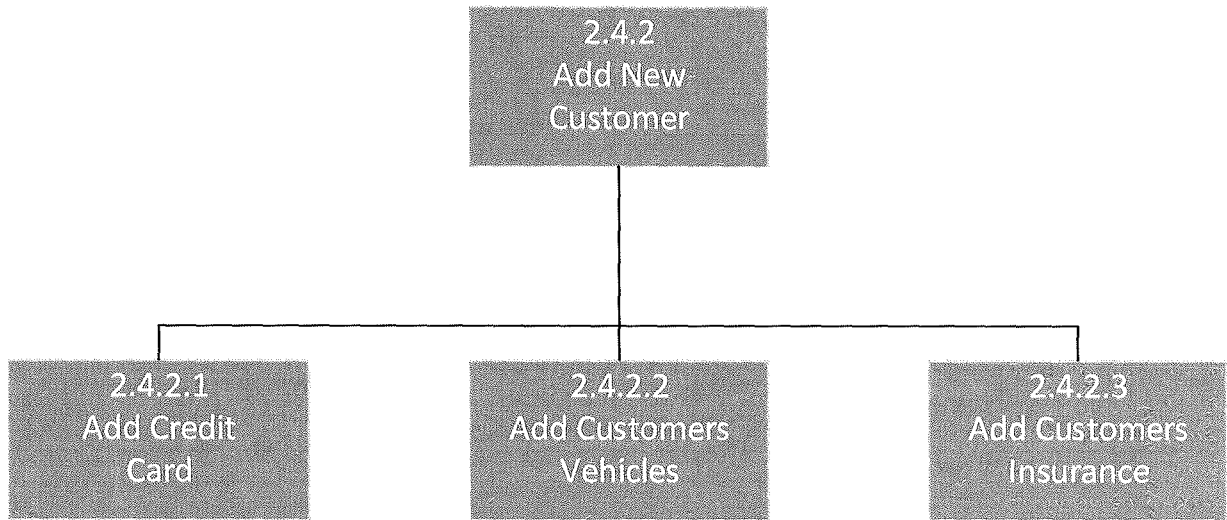


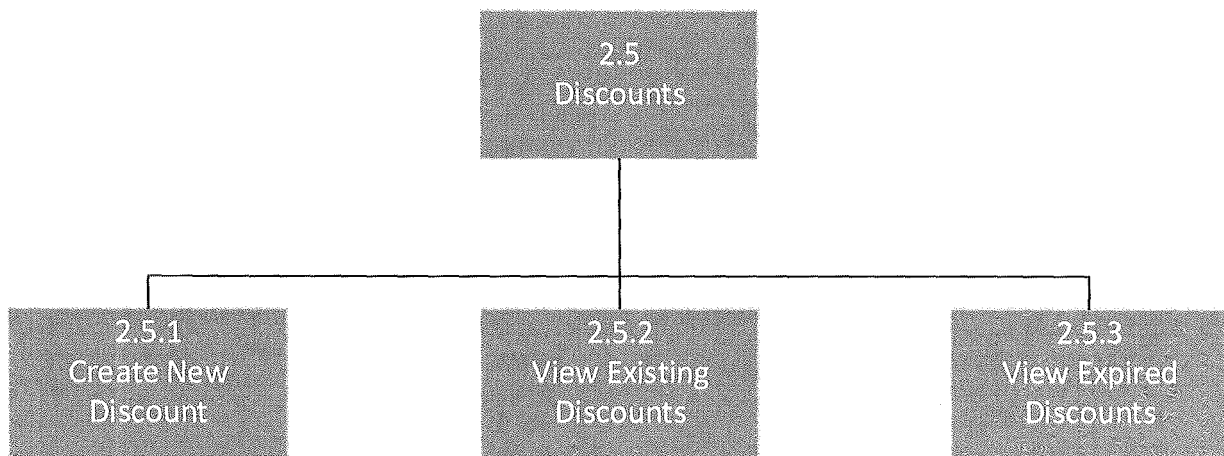


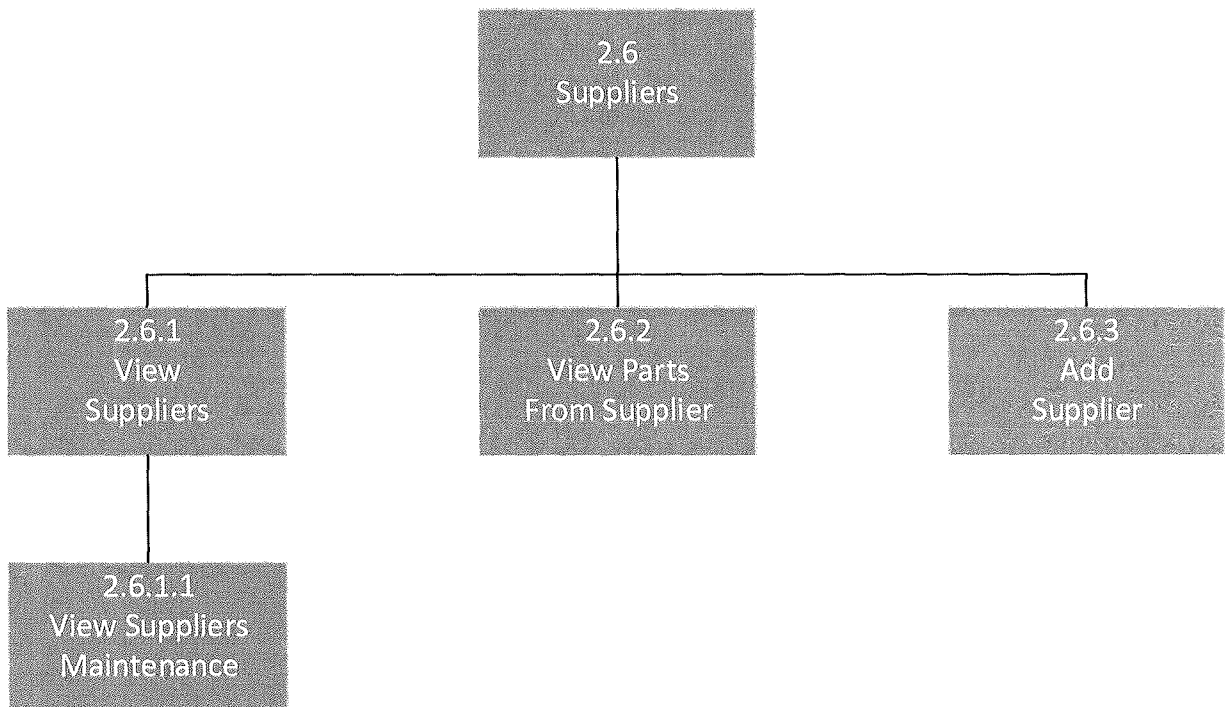










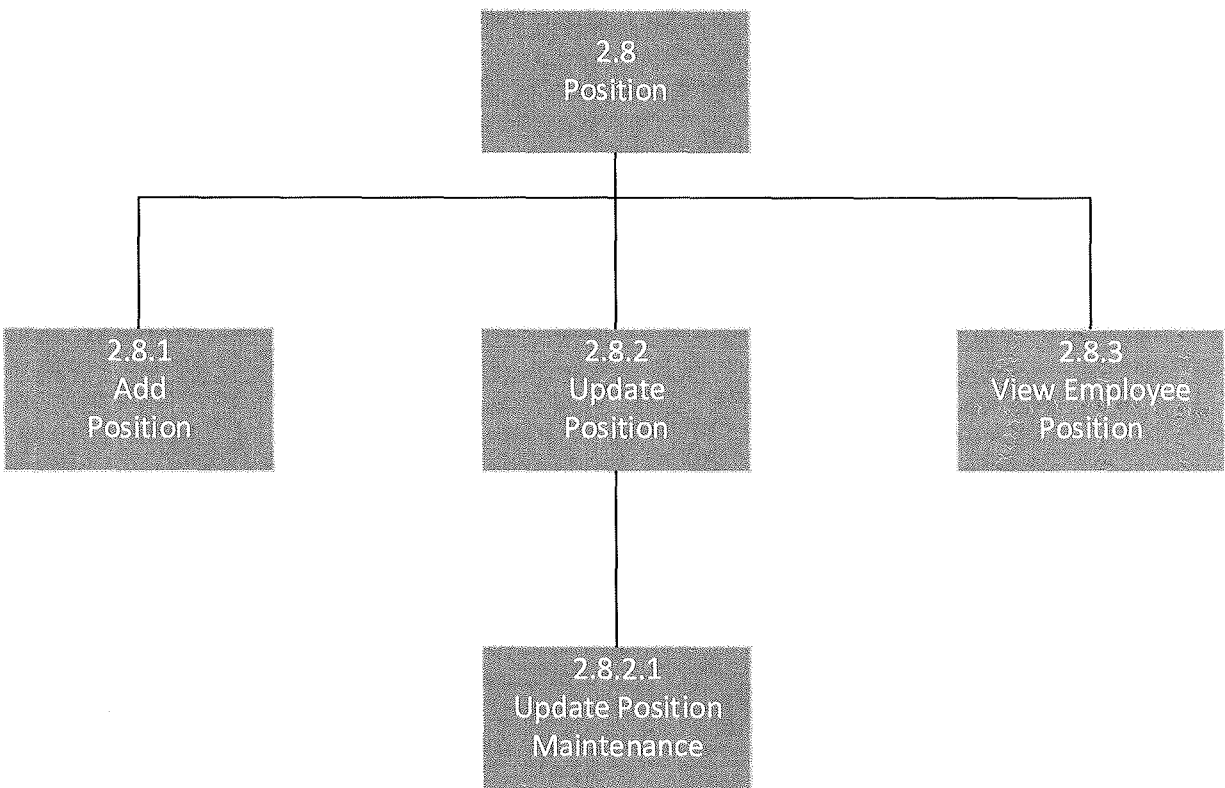


2.7  
Current Jobs

2.7.1  
Load Jobs

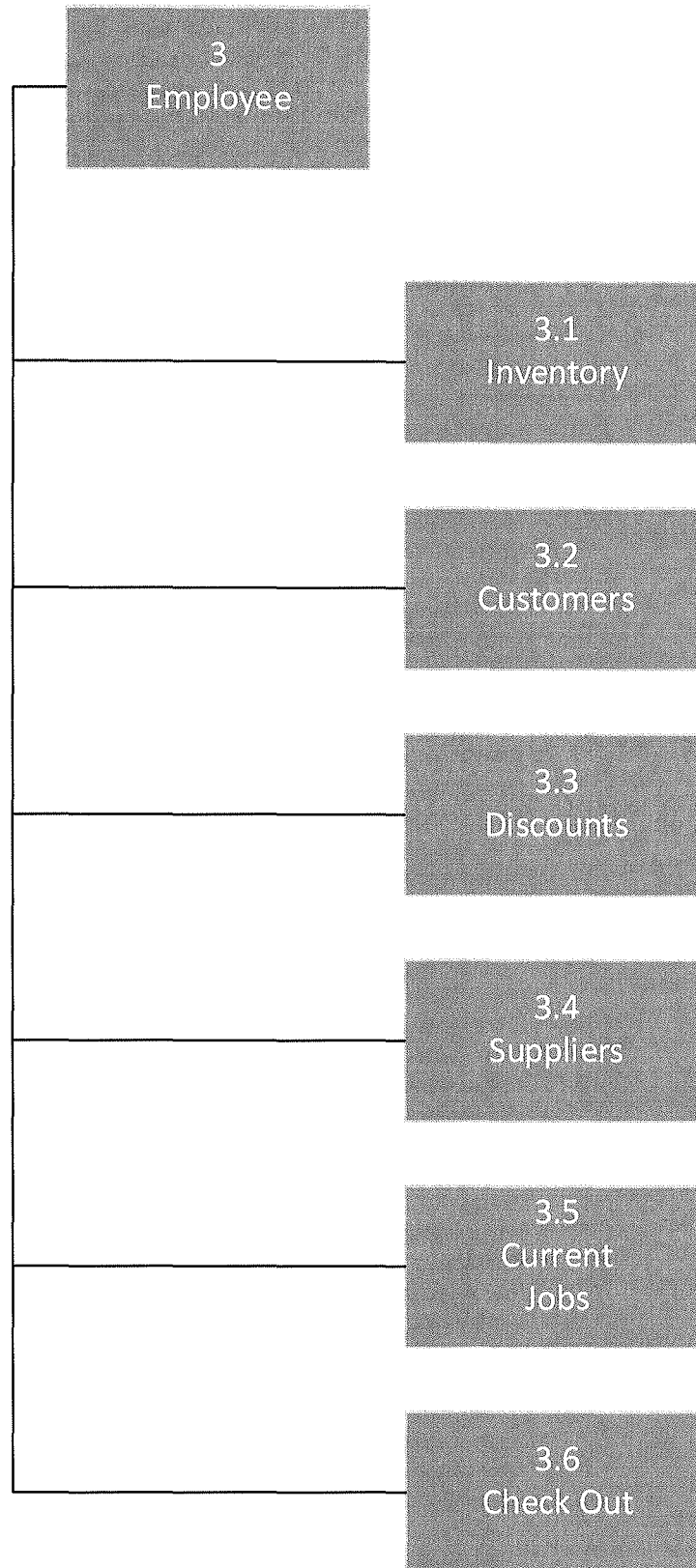
2.7.1.1  
Load Jobs  
Maintenance

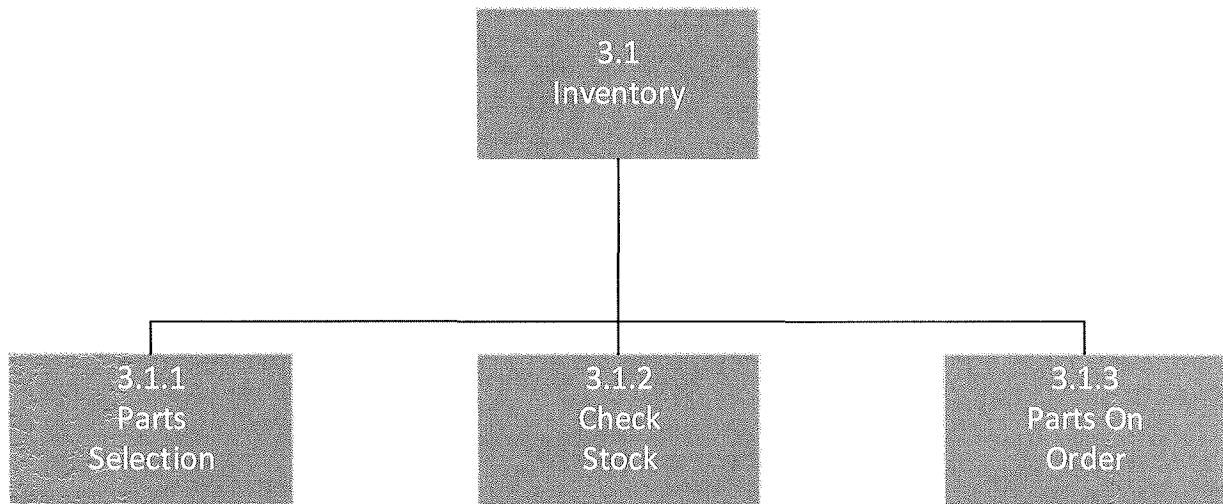


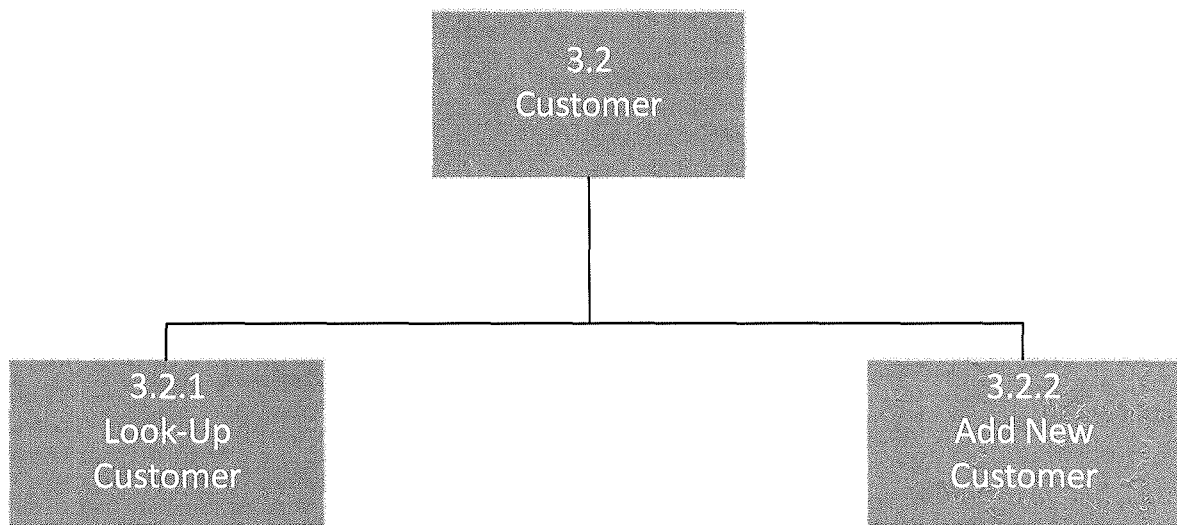


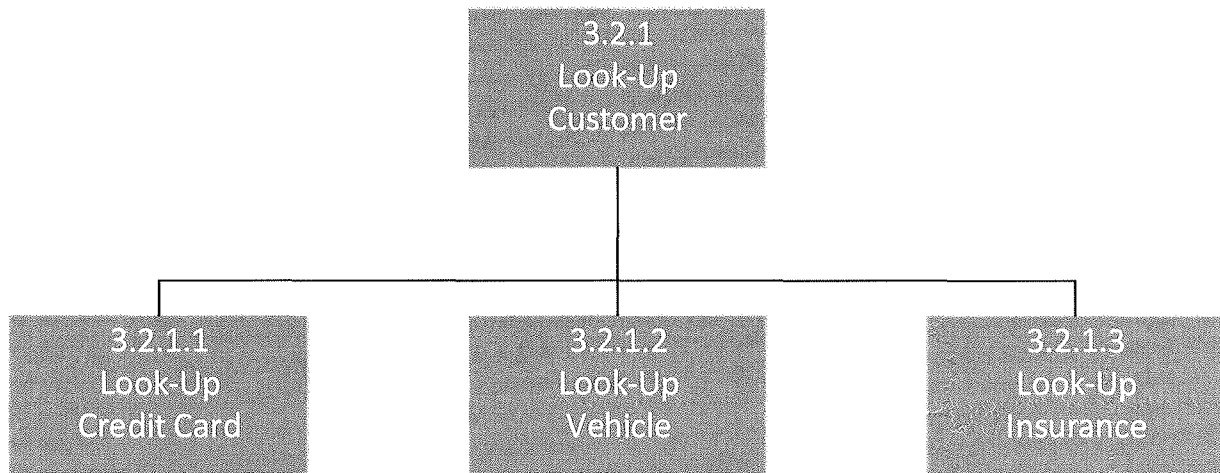
## 2.9 Check Out

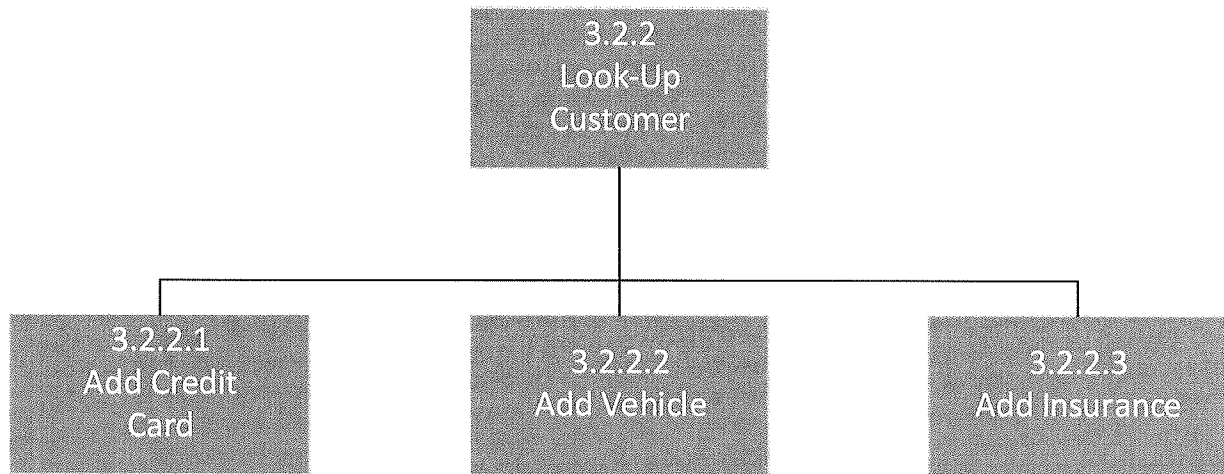
### 2.9.1 Get Customer Bill

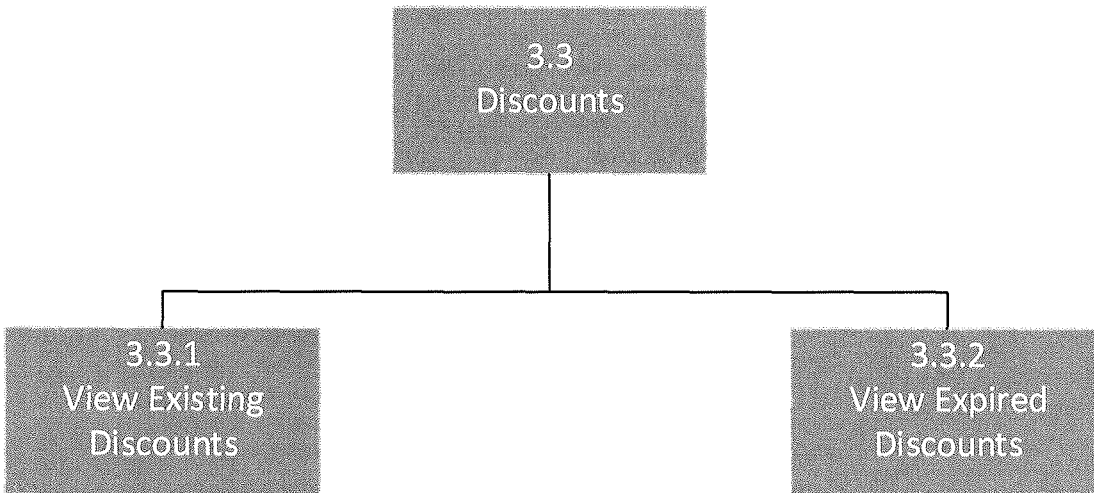




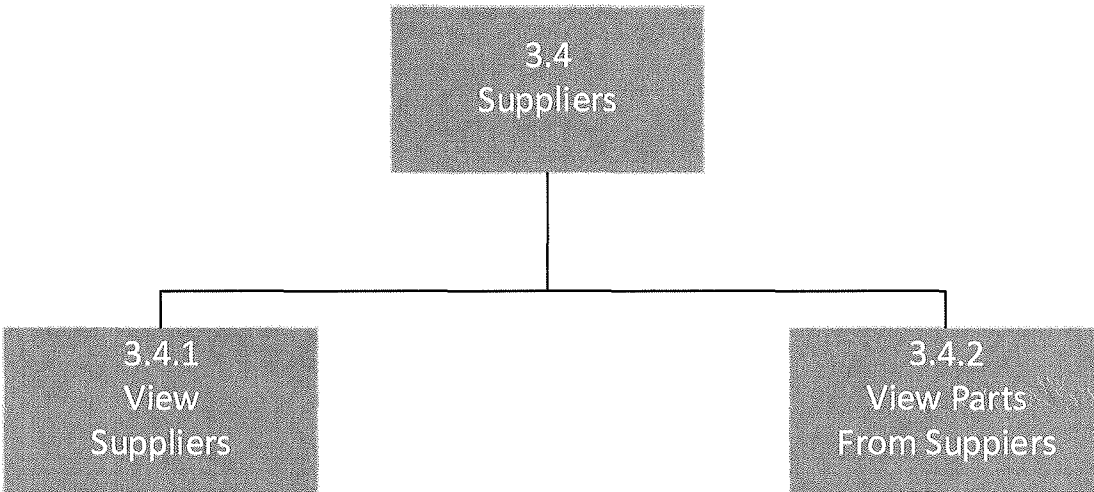












### 3.5 Current Jobs

#### 3.5.1 Look-Up Current Jobs

3.6  
Check Out

3.6.1  
Get Customer  
Bill

## **Task 1 - Employee Log in**

The first task in the system is to require the user to login in. This task allows there to be different levels of security. Task 0 will initiate tasks 1 and task 2. Task 1 is a process that is initiated in the event that a manager level employee logs on. Task 2 is a process that is initiated in the event that a lower level employee logs on.

## **Task 2 - Manager Menu**

Task 2 is a process that pulls up the menu for manager level employees only. Task 2 includes a sub process that deals with the inventory needs of Rapid Response Auto Service. The sub processes that deal with the Inventory subtask are as follows:

- 2.1.1 - Order Parts: Process that handles that ordering of new parts.
- 2.1.2 - Parts Selection: Process that allows the user to see a complete list of parts sold in
- 2.1.3 - Check Stock: Process that allows the user to manually see the quantity of items in
- 2.1.4 - Parts on Order: Process that allows the user to see that parts that are currently being ordered to restock inventory.
- 2.1.5 - Top Parts: Process that allows the user to see what parts have be sold the most given a specific time period.

A sub process for reports to visually see the inner workings of Rapid Response Auto Service. The reports generated by the report subtask are as followed:

- 2.2.1 - Daily: Process that gives the user a report on the business' daily progress.
- 2.2.2 - Weekly: Process that gives the user a report on the business' weekly progress.
- 2.2.3 - Monthly: Process that gives the user a report on the business' monthly progress.
- 2.2.4 - Yearly: Process that gives the user a report on the business' monthly progress.

Subtask that handles all the process dealing with the employees. The processes initiated by the Employee subtask are as followed:

- 2.3.1 - View Current Employees
- 2.3.1 - Employees Maintenance: process that handles the insert, update and deletion of company employees.
- 2.3.2 - Add New Employee: process for quickly adding an employee.

Subtask that handle all the processes that deal with the company's' costumers. The sub processes that are initiated by the Customers subtasks are as followed:

- 2.4.1 - Look-up Customers: Process to look up all existing customers of Rapid Response
- 2.4.1.1 - Look-up Credit Card: Process that allows the user to view credit cards belonging to the selected customer.
- 2.4.1.1.1 Credit Card Maintenance: Allows for insert, update and deletion of customer credit cards.
- 2.4.1.2 - Look-up Vehicle: Process that allows the user to view the vehicles brought in by the customer.
- 2.4.1.1.2 - Vehicle Maintenance: Allows for insert, update, and deletion of customer vehicle.
- 2.4.1.3 - Look-up Insurance: Process that allows the user to view the insurance the customer has for a vehicle.
- 2.4.1.1.3 - Insurance Maintenance: Allows for insert, update, and deletion of customer car insurance information.
- 2.4.2 - Adder New Customer: Process for adding a new customer
- 2.4.2.1 Add Credit Card: Process for adding a credit card for the new customer.
- 2.4.2.2 Add Customer Vehicles: Process for adding vehicles for the new
- 2.4.2.3 Add Customers Insurance: Process for adding the new customers care

Subtask that initiates all the processes that handle discounts available and those that are not available to the customer. The sub processes initiated by the discount subtask are as follows:

- 2.5.1 - Create New Discount: Process that allows the user to add a new discount.
- 2.5.2 - View Existing Discount: Process that allows the user to view all existing discounts.
- 2.5.3 - View Expired Discount: Process that allows the user to view all expired discounts.

Subtask that initiates all the processes that handle information dealing with suppliers. The sub processes initiated by the supplier subtask are as follows:

- 2.6.1 - View Suppliers: Process that allows the user to see all suppliers for the company.
- 2.6.11 - Supplies Maintenance: Allows for insert, update, and deletion of
- 2.6.2 View Parts From Supplier: Process that allows the user to see all parts sold to the company by a given supplier.

- 2.6.3 - Add Supplier: Process to quickly add a new supplier for the company.

Subtask that initiates all the processes that handle information dealing with current vehicle jobs. The sub processes initiated by the current job subtask are as follows:

- 2.7.1 - Load Jobs: Process that allows the user to view all the current jobs being
- 2.7.1.1 - Load Jobs Maintenance: Allows for the insert, update and deletion of

Subtask that initiates all the processes that handle information dealing with employee positions. The sub processes initiated by the position subtask are as follows:

- 2.8.1 - Add Position: Process for adding an employee position.
- 2.8.2 - Update Position: Process for updating an employee position.
- 2.8.3 - View Employee: Process that allows the user to see all possible positions an

Subtask that initiates all the processes that handle customer check out transactions. The sub process initiated by the checkout subtask is as follows:

- 2.9.1 - Get Customer Bill: process that calculates the bill for the customers. Include the services done on the vehicle and the parts purchase, if any.

### **Task 3 - Employee Menu**

Task 3 is a process that pulls up the menu for lower level employees. Task 3 includes the a sub process that deals with the inventory needs of Rapid Response Auto Service. The sub processes that deal with the Inventory subtask are as follows:

- 3.1.1 - Parts Selection: Process that allows the user to see a complete list of parts sold in
- 3.1.2 - Check Stock: Process that allows the user to manually see the quantity of items in
- 3.1.3 - Parts on Order: Process that allows the user to see that parts that are currently being ordered to restock inventory.

Subtask that handle all the processes that deal with the company's' costumers. The sub processes that are initiated by the Customers subtasks are as followed:

- 3.2.1 - Look-up Customers: Process to look up all existing customers of Rapid Response
- 3.2.1.1 - Look-up Credit Card: Process that allows the user to view credit cards belonging to the selected customer.

- 3.2.1.2 - Look-up Vehicle: Process that allows the user to view the vehicles brought in by the customer.
- 3.2.1.3 - Look-up Insurance: Process that allows the user to view the insurance the customer has for a vehicle.
- 3.2.2 - Adder New Customer: Process for adding a new customer
- 2.4.2.1 Add Credit Card: Process for adding a credit card for the new customer.
- 2.4.2.2 Add Customer Vehicles: Process for adding vehicles for the new
- 2.4.2.3 Add Customers Insurance: Process for adding the new customers care

Subtask that initiates all the processes that handle discounts available and those that are not available to the customer. The sub processes initiated by the discount subtask are as follows:

- 3.3.1 - View Existing Discount: Process that allows the user to view all existing discounts.
- 3.3.2 - View Expired Discount: Process that allows the user to view all expired discounts.

Subtask that initiates all the processes that handle information dealing with suppliers. The sub processes initiated by the supplier subtask are as follows:

- 3.4.1 - View Suppliers: Process that allows the user to see all suppliers for the company.
- 3.4.2 View Parts From Supplier: Process that allows the user to see all parts sold to the company by a given supplier.

Subtask that initiates all the processes that handle information dealing with current vehicle jobs. The sub processes initiated by the current job subtask are as follows:

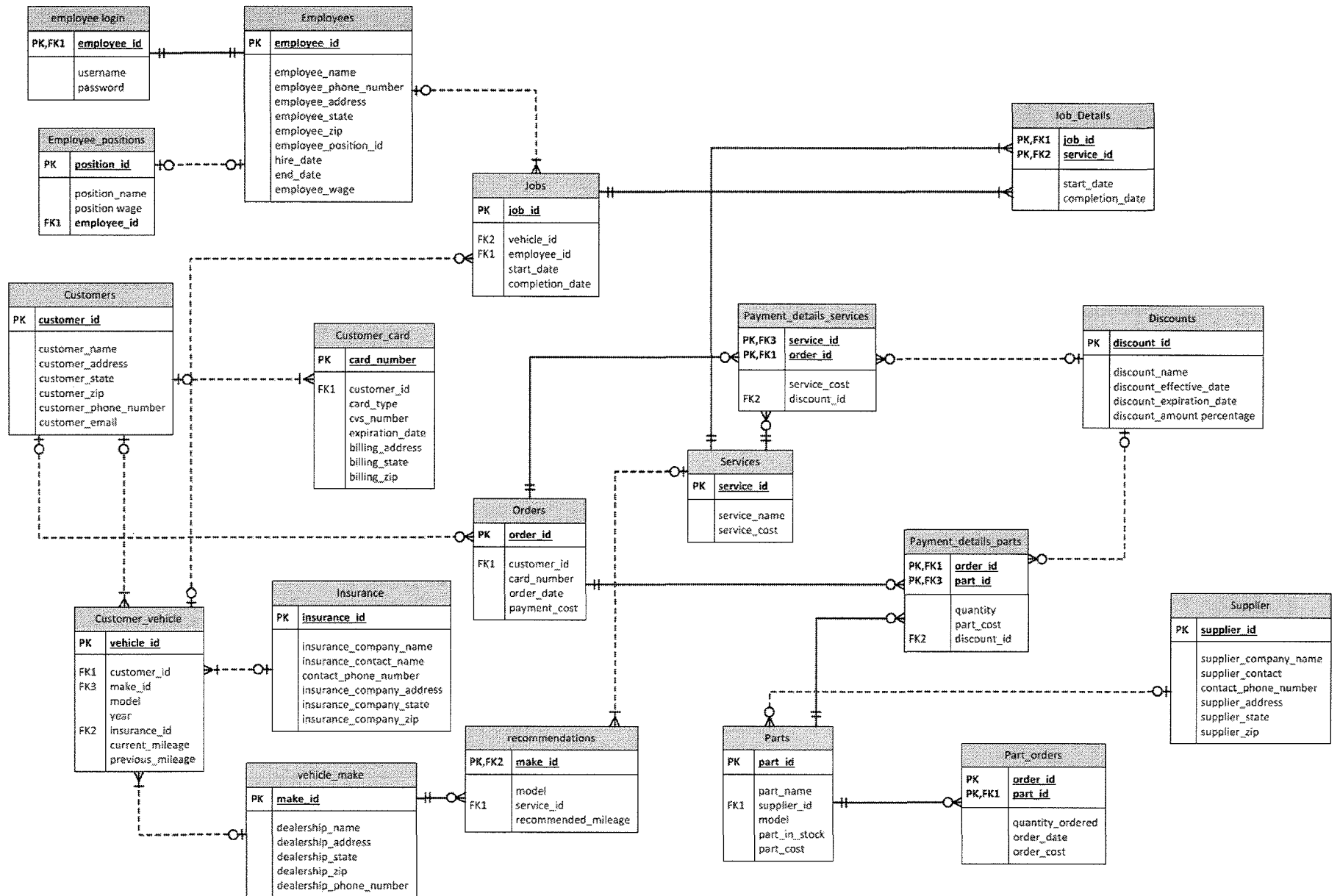
- 3.5.1 - Look-up Current Jobs: Process that allows the user to view al the current jobs

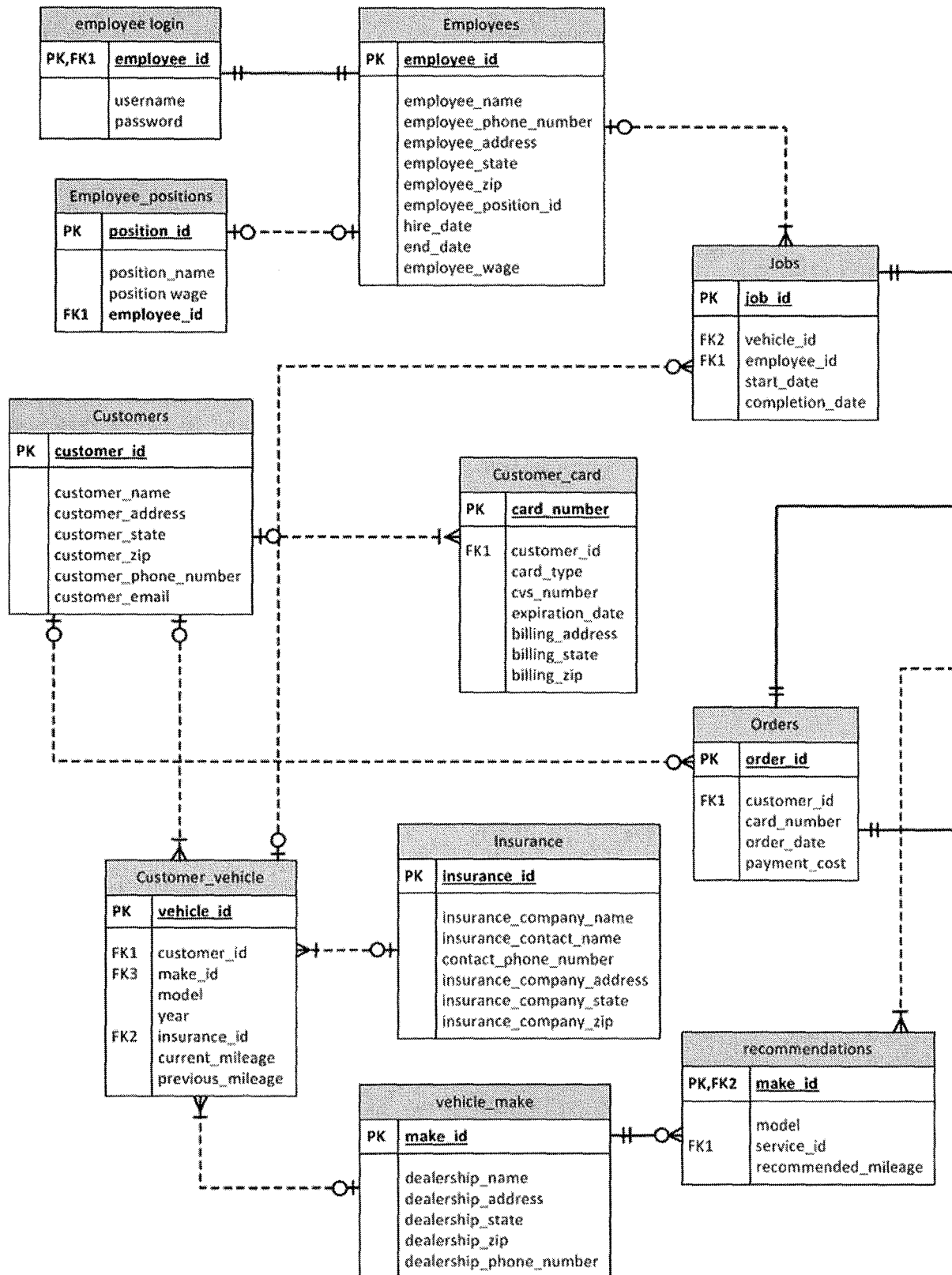
Subtask that initiates all the processes that handle customer check out transactions. The sub process initiated by the checkout subtask is as follows:

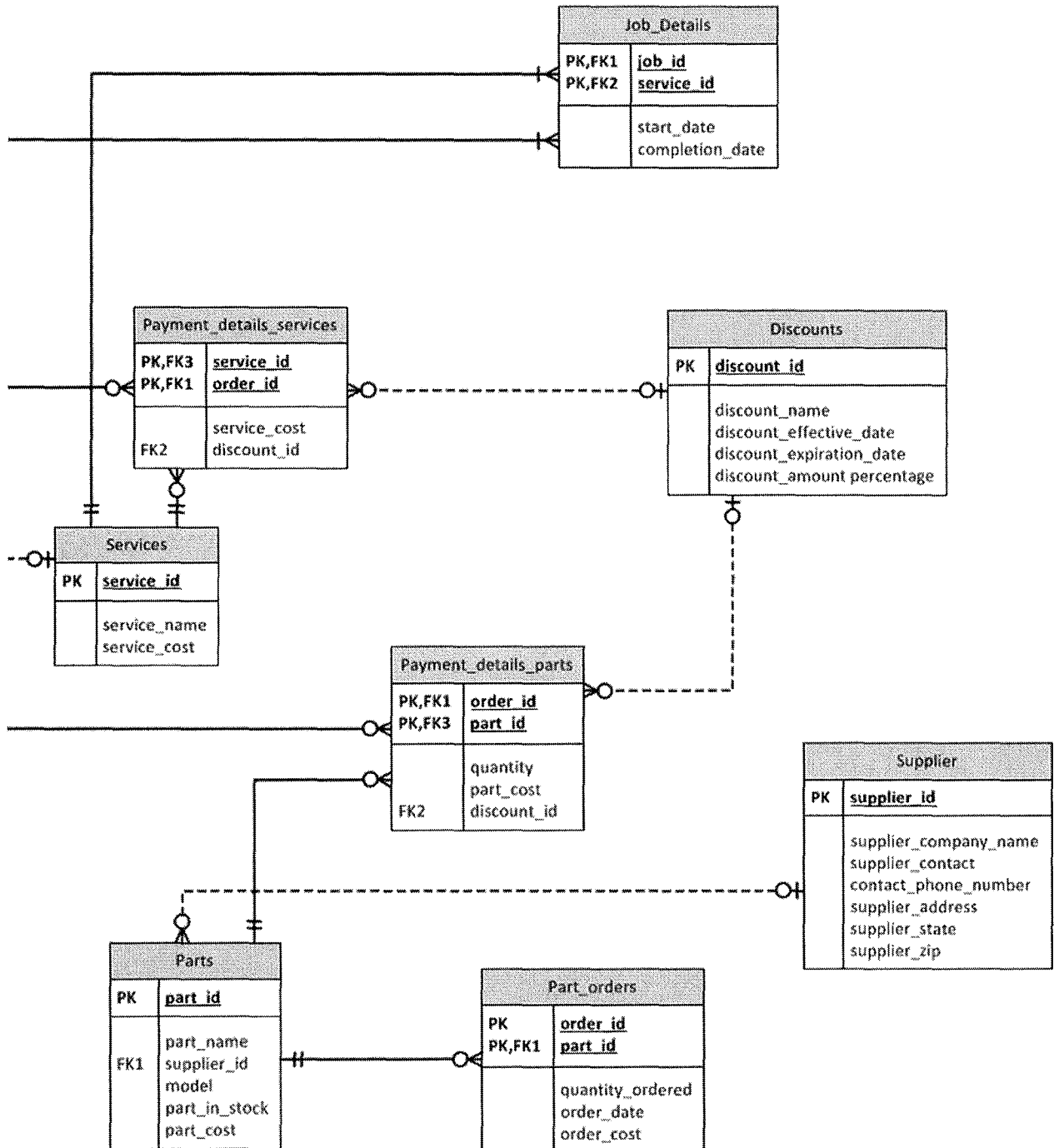
- 3.6.1 - Get Customer Bill: process that calculates the bill for the customers. Include the services done on the vehicle and the parts purchase, if any.

# ENTITY RELATIONSHIP DIAGRAM (ERD)









# DETAILED TABLE DESCRIPTIONS

## Rapid Response Auto Service Database Tables

### *Information about the customer credit card*

**Customer\_Card** (card number, customer\_id, card\_type, cvs\_number, expiration\_date, billing\_address, billing\_state, billing state)

### *Information about the customer vehicle*

**Customer\_Vehicle** (vehicle id, customer\_id, make\_id, model, year, insurance\_id, current\_mileage, previous\_mileage)

### *Information about the customer*

**Customers** (customer id, customer\_name, customer\_address, customer\_state, customer\_zip, customer\_phone\_numer, customer\_email)

### *Information for discounts*

**Discounts** (discount id, discount\_name, discount\_effective\_date, discount\_expiration\_date, discount\_amount\_percentage)

### *Information for employee login*

**Employee\_Login** (employee\_id, username, password)

### *Information on employee positions available in Rapid Response Auto Service*

**Employee\_Positions** (position\_id, position\_name, position\_wage, employee\_id)

### *Information about employees*

**Employees** (employee id, employee\_name, employee\_phone\_number, employee\_address, employee\_state, employee\_zip, employee\_position\_id, hire\_date, end\_date, employee\_wage)

### *Information on car insurance*

**Insurance** (insurance\_id, insurance\_company\_name, insurance\_contact\_name, contact\_phone\_number, insurance\_company\_address, insurance\_company\_state, insurance\_company\_zip)

### *Detailed information on jobs*

**Job\_Details** (job\_id, service id, start\_date, completion\_date)

### *Information about vehicles that are currently or is in service*

**Jobs** (job\_id, vehicle\_id, employee\_id, start\_date, completion\_date)

### *Information on parts being ordered for inventory*

**Part\_Orders** (order\_id, part\_id, quantity\_ordered, order\_date, order\_cost)

*Information on parts sold at Rapid Response Auto Service*

**Parts** (part id, part\_name, supplier\_id, model, part\_in\_stock, part\_cost)

*Information for ordered parts*

**Payment\_Details\_Parts** (order id, part id, quantity, part\_cost, discount\_id)

*Information on ordered services*

**Payment\_Details\_Services** (service id, order id, service\_cost, discount\_id)

*Information about service recommendations*

**Recommendations** (make id, model, service\_id, recommended\_mileage)

*Information about services*

**Services** (service id, service\_name, service\_cost)

*Information about supplier*

**Supplier** (supplier id, supplier\_company\_name, supplier\_contact, contact\_phone\_number,  
Supplier\_address, supplier\_state, supplier\_zip)

*Information about vehicle manufacturer*

**Vehicle\_make** (make id, dealership\_name, dealership\_address, dealership\_state, dealership\_zip,  
dealership\_phone\_number)

## CUSTOMERS

FIELD NAME	DESCRIPTION
customer_id	Customer's ID Number ( <b>PRIMARY KEY</b> )
customer_name	Customer's Full Name
customer_address	Customer's Home Address
customer_state	Customer's State
customer_zip	Customer's Zip Code
customer_phone_number	Customer's Contact Number
customer_email	Customer's E-mail Address

The Customers table includes information about the customers at Rapid Response Auto Service.

## CUSTOMER\_CARD

FIELD NAME	DESCRIPTION
card_number	Customer's Credit Card Number ( <b>PRIMARY KEY</b> )
customer_id	Customer's ID Number ( <b>FOREIGN KEY</b> )
card_type	MasterCard, Visa, Debit
cvs_number	Optional 3-Digit Number on Back of Card
expiration_date	Expiration Date of Card
billing_address	Customer's Billing Address
billing_state	Customer's Billing State
billing_zip	Customer's Billing Zip Code

The Customer\_Card table includes information about the customer's credit card that is used as payment for services rendered.



## CUSTOMER\_VEHICLE

FIELD NAME	DESCRIPTION
vehicle_id	Vehicle Identification Number (VIN) <b>(PRIMARY KEY)</b>
customer_id	Customer's ID Number <b>(FOREIGN KEY)</b>
model	Model of Vehicle
make_id	Vehicle Make ID Number <b>(FOREIGN KEY)</b>
vehicle_year	Year of Vehicle
insurance_id	Insurance ID Number <b>(FOREIGN KEY)</b>
previous_mileage	Previous Mileage on Vehicle at Last Service
current_mileage	Current Mileage on Vehicle

The Customer\_Vehicle table represents information on the customer's vehicle/vehicles. This information includes the Vehicle Identification Number (VIN), the model and year of the vehicle, and the customer's insurance ID number for filing insurance claims. The previous and current mileage is also included within the table.

## DISCOUNTS

FIELD NAME	DESCRIPTION
discount_id	Discount ID Number ( <b>PRIMARY KEY</b> )
discount_name	Discount Name
discount_effective_date	Date Discount Becomes Effective
discount_expiration_date	Date Discount Expires
discount_amount_percentage	Amount of Discount

The Discounts table relates the number of the discount as well as the type of discount, when it becomes effective, the expiration date, and the amount of the discount being offered.

## EMPLOYEES

FIELD NAME	DESCRIPTION
employee_id	Employee's ID Number ( <b>PRIMARY KEY</b> )
employee_name	Employee's Full Name
employee_phone_number	Employee's Contact Number
employee_address	Employee's Home Address
employee_state	Employee's State
employee_zip	Employee's Zip Code
employee_position_id	Employee's Position ID Number
hire_date	Employee's Hire Date
end_date	Employee's Termination/Cease Date
employee_wage	Employee's Wage Rate

The Employees table includes information about current and past employees given the past employees have not been deleted out of the system. This table includes, but is not limited to, the employee's job position ID number, their hire date, termination/cease date, and their wage rate.

## EMPLOYEE\_LOGIN

FIELD NAME	DESCRIPTION
employee_id	Employee's ID Number ( <b>PRIMARY KEY</b> )
username	Employee's Username
password	Employee's Password

The Employee\_Login table includes information that is needed for each employee to log-in to the Rapid Response system. This includes the employee's ID number, username, and password for the system.

## EMPLOYEE\_POSITIONS

FIELD NAME	DESCRIPTION
position_id	ID Number for Specific Job Position ( <b>PRIMARY KEY</b> )
position_name	Specific Job Position Name
position_wage	Specific Job Position Wage Rate

The Employee\_Positions table includes information about the job positions that are available at Rapid Response Auto Service including the wage rate for each position.

## INSURANCE

FIELD NAME	DESCRIPTION
insurance_id	Insurance ID Number <b>(PRIMARY KEY)</b>
insurance_company_name	Name of Insurance Company
insurance_contact_name	Name of Person Contacted at Company
insurance_contact_number	Contact Phone Number of Person Contacted
insurance_company_address	Insurance Company Address
insurance_company_state	Insurance Company State
insurance_company_zip	Insurance Company Zip Code

The Insurance table represents the customer's information regarding vehicle insurance. This includes the name of the insurance company as well as the name and phone number of the person that was contacted at the company.

## JOB\_DETAILS

FIELD NAME	DESCRIPTION
job_id	Job ID Number <b>(PRIMARY KEY)</b>
service_id	Service ID Number <b>(PRIMARY KEY)</b>
start_date	Date Vehicle Service Started
completion_date	Date Vehicle Service Completed

The Job\_Details table includes information about current jobs awaiting service including the date the service was started and the date that the service was completed. This table lets you know if there is more than one service being performed on one vehicle.

## JOBS

FIELD NAME	DESCRIPTION
job_id	Job Title ID Number <b>(PRIMARY KEY)</b>
vehicle_id	Vehicle Identification Number (VIN) of Vehicle To Be Serviced <b>(FOREIGN KEY)</b>
employee_id	Employee's ID Number <b>(FOREIGN KEY)</b>
start_date	Date the Service on Vehicle Started
completion_date	Date the Service on Vehicle Completed

The Jobs table includes information about the vehicle/vehicles that a customer currently has at Rapid Response for recommended services.



## ORDERS

FIELD NAME	DESCRIPTION
order_id	Order Identification Number ( <b>PRIMARY KEY</b> )
customer_id	Customer ID Number
card_number	Customer's Credit Card Number
order_date	Date the Order Placed
payment_cost	Total Cost Due

The Orders table provides information for the payments for a single order. This includes the date the order was placed and the total cost of the order.

## PART\_ORDERS

FIELD NAME	DESCRIPTION
order_id	Order ID Number ( <b>PRIMARY KEY</b> )
part_id	Vehicle Part ID Number ( <b>FOREIGN KEY</b> )
quantity_order	Number of Parts Ordered
order_date	Date the Order Placed
order_cost	Cost of the Order

The Part\_Orders table includes information for the ordered parts that are already in the company's inventory.

## PARTS

FIELD NAME	DESCRIPTION
part_id	Vehicle Part ID Number <b>(PRIMARY KEY)</b>
part_name	Name of Part Needed
supplier_id	Vehicle Part Supplier ID Number <b>(FOREIGN KEY)</b>
model	Vehicle Model Type
part_in_stock	Number of Specific Parts in Stock
part_cost	Cost of Specific Parts

The Parts table provides information on the vehicle parts that are sold at Rapid Response Auto Service including the cost of specific parts.

## PAYMENT\_DETAILS\_PARTS

FIELD NAME	DESCRIPTION
order_id	Order Identification Number ( <b>PRIMARY KEY</b> )
part_id	Vehicle Part ID Number ( <b>PRIMARY KEY</b> )
quantity	Number of Parts Ordered
discount_id	Discount ID Number
part_cost	Cost of Part After Applied Discount

The Payment\_Details\_Parts table offers information about the parts that are ordered. This table uses both the order identification number and the vehicle part ID number as primary keys. This option will make these two fields a concatenated key.

## PAYMENT\_DETAILS\_SERVICES

FIELD NAME	DESCRIPTION
order_id	Order ID Number ( <b>PRIMARY KEY</b> )
service_id	Service ID Number ( <b>PRIMARY KEY</b> )
service_cost	Cost of Service Provided
discount_id	Discount ID Number

The Payment\_Details\_Services table provides information regarding the type of service that the customer and company have agreed should be performed on a specific customer's vehicle. The order ID number and the service ID number are both being used as primary keys. This will make the order ID number and the service ID number a concatenated key.

## RECOMMENDATIONS

FIELD NAME	DESCRIPTION
make_id	Manufacturer ID Number <b>(PRIMARY KEY)</b>
model	Vehicle Model Type
service_id	Service ID Number <b>(FOREIGN KEY)</b>
recommended_mileage	Used to Consider Previous Mileage and Current Mileage to Determine Recommendations

The Recommendations table includes information about vehicle service recommendations in respect to the vehicle manufacturer for their specific vehicle.

## SERVICES

FIELD NAME	DESCRIPTION
service_id	Service ID Number <b>(PRIMARY KEY)</b>
service_name	Name of Service Provided
service_cost	Cost of Service Provided

The Services table includes information such as the ID number for the service provided by the employees as well as the service provided and the cost.

## SUPPLIER

FIELD NAME	DESCRIPTION
supplier_id	Supplier ID Number <b>(PRIMARY KEY)</b>
supplier_company_name	Company Name of Supplier
supplier_contact	Name of Person Contacted
contact_phone_number	Contact Person's Phone Number
supplier_address	Supplier's Company Address
supplier_state	Supplier's State
supplier_zip	Supplier's Zip Code

The Supplier table includes information about the supplier that the company uses to order necessary parts. This includes the supplier's company name as well as the name and number of the person that was contacted at the supplier's company regarding the vehicle parts.



## VEHICLE\_MAKE

FIELD NAME	DESCRIPTION
make_id	Vehicle Make ID Number <b>(PRIMARY KEY)</b>
dealership_name	Vehicle Manufacturer's Name
dealership_address	Vehicle Manufacturer's Address
dealership_state	Vehicle Manufacturer's State
dealership_zip	Vehicle Manufacturer's Zip Code
dealership_phone_number	Vehicle Manufacturer's Phone Number

The Vehicle\_Make table provides information regarding the make of the customer's vehicle and dealership information where the vehicle was purchased.

# DETAILED SCREEN LAYOUTS

# Login

Username:

Password:

### Screen Description

This screen is for the log in. The system will determine whether the user is a manager or employee. Depending on the position of the user, it will take them to either the manager page, or the employee page. The manager page has access to all options, while the employees have access to fewer options.

Field	Description
Username	Text field for the user to enter their username.
Password	Text field for the user to enter their password.

Field	Table
Username	employee_name
Password	employee_id

## Main Menu

Inventory

Reports

Employees

Customer

Discounts

Suppliers

Current Jobs

Position

Check Out

### Screen Description

This is the manager page. This page allows the manager to control all aspects of the system. The manager has access to view the inventory, customers, current jobs, reports, discounts, positions, employees, suppliers, and check out menus. Each button will be described on their respected screen description page.

Field	Description
Inventory	Button to take the user to the Inventory Page
Customers	Button to take the user to the Customers Page
Current Jobs	Button to take the user to the Current Jobs Page
Reports	Button to take the user to the Reports Page
Discounts	Button to take the user to the Discounts Page
Positions	Button to take the user to the Positions Page
Employees	Button to take the user to the Employees Page
Suppliers	Button to take the user to the Suppliers Page
Check out	Button that takes the user to the Checkout Page

Field	Table
Inventory	Parts
Customers	Customers
Current Jobs	Jobs
Reports	Services
Discounts	Discounts
Positions	Position
Employees	Employees
Suppliers	Suppliers
Check Out	Customers, service, discounts

# Inventory

Order Parts

Part Selection

Check Stock

Parts On Order

Add Parts

### **Screen Description**

This is the inventory page. It is for the manager. From here the manager can order parts, view parts on order, view parts in the inventory, add parts to the inventory, and check the stock of the inventory.

Field	Description
Order Parts	Button to order parts
Parts on Order	Button to view parts on order
Part Selection	Button to view the part
Add Parts	Button to add stock to the inventory
Check Stock	Button to check the stock of the inventory

Field	Table
Order Parts	Parts
Parts on Order	Parts
Part Selection	Parts
Add Parts	Parts
Check Stock	Parts



## Order Parts

Quantity:

Quantity:

### Screen Description

This page allows the manager to order parts. A drop down list allows the user to select the part they wish to order. From here, the user can input the amount they want in a text field. By clicking the submit button, the user can place the order.

Field	Description
Parts Drop Down List	List the parts in the inventory
Quantity Text Field	Text Field to allow the user to enter the quantity
Submit Button	Button to submit the order

Field	Table
Parts Drop Down List	Parts
Quantity Text Field	Part_id
Submit Button	Parts

## Parts in Inventory

Supplier Name:

Model of the Vehicle the Part is for:

Make of the Vehicle the Part is for:

Parts In Stock:

Part Cost:

### Screen Description

This page allows the manager to view the parts in the inventory. There is a drop down list for the user to select the part they would like to view. Through using the auto post back method, the system will display the supplier the part is from, the make and model of the vehicle the part is for, the parts in stock, and the cost of the part.

Field	Description
Parts Drop Down List	List of the parts in the inventory
Supplier Name Text field	Text field to display the supplier's name
Model of the Vehicle Text field	Text field to display the model of the vehicle
Make of the Vehicle Text field	Text field to display the make of the vehicle
Parts in Stock Text field	Text field to display the parts in stock
Part Cost Text field	Text field to display the part's cost

Field	Table
Parts Drop Down List	Parts
Supplier Name Text field	Supplier_name
Model of the Vehicle Text field	Model_name
Make of the Vehicle Text field	Make_name
Parts in Stock Text field	Parts_in_stock
Part Cost Text field	Part_cost

# Check Stock

Items In Stock

Part Name	Number in Stock	Item Price

### Screen Description

This page will allow the manager to check the stock of the inventory. It will display the stock to the user through a table. The stock will automatically be displayed in the table with a select statement. It will display the part's name, the number of items in stock, and the items price.

Field	Description
Part Name Table Column	Table Column to display the part's name
Number in Stock Table Column	Table Column to display the number of part's in stock
Item Price Table Column	Table Column to display the price of the part

Field	Table
Part Name Table Column	Part_name
Number in Stock Table Column	Part_stock
Item Price Table Column	Part_cost

## Parts Ordered

Order Quantity:

Order Date:

Order Cost:

### Screen Description

This page allows the manager to see the parts that are currently being ordered. The user will select the part that is currently on order from a drop down list. Then through auto post back, the order quantity, order due date, and order cost will be displayed to the user.

Field	Description
Part's Name Drop Down List	Drop Down List to display the name of the parts that are currently being ordered.
Order Quantity Text field	Text field to display the amount ordered
Order Due Date Text field	Text field to display the expected date of arrival of the part
Order Cost Text field	Text field to display how much the order cost

Field	Table
Part's Name Drop Down List	Part_name
Order Quantity Text field	Part_in_stock
Order Due Date Text field	Order_date
Order Cost Text field	Part_cost



## Add Parts

Part Name:

Supplier Name:

Vehicle Make:

Vehicle Model:

Parts In Stock:

Part Cost:

Add Part

### Screen Description

This page will allow the manager to add parts to the inventory. This is useful when new parts are added to the market that the company needs in their stock. Every year a new vehicle is made, the parts for it may or may not be the same. This page allows the user to add parts when this occurs. The user can input the part's name, the supplier's name, the vehicle make and model the part is for, how many parts they have in their stock, and how much the part cost.

Field	Description
Part's Name Text field	Text field to allow the user to input the part's name
Supplier's Name Text field	Text field to allow the user to input the supplier's name
Vehicle Make Text field	Text field to allow the user to input the make of the vehicle the part is for
Vehicle Model Text field	Text field to allow the user to input the model of the vehicle the part is for
Part's in Stock Text field	Text field to allow the user to input the amount of the part they want to add to their stock
Part Cost Text field	Text field to allow the user to input the cost of the part

Field	Table
Part's Name Text field	Part_name
Supplier's Name Text field	Supplier_name
Vehicle Make Text field	Make_name
Vehicle Model Text field	Model_name
Part's in Stock Text field	Part_in_stock
Part Cost Text field	Part_cost

## Reports

Daily Reports

Weekly Reports

Monthly Reports

Yearly Reports

### Screen Description

This page is specifically designed for the manager. It will allow the user to see how well the company is doing on a daily, weekly, monthly, and yearly basis. Each button will take the user to a specific page and display the information.

Field	Description
Daily Button	Button that will take the user to daily reports
Weekly Button	Button that will take the user to weekly reports
Monthly Button	Button that will take the user to monthly reports
Yearly Button	Button that will take the user to yearly reports

Field	Table
Daily Button	Part_cost – order_cost
Weekly Button	Part_cost – order_cost
Monthly Button	Part_cost – order_cost
Yearly Button	Part_cost – order_cost

## Daily Reports

Parts Sold Today:

Parts that did not Sell:

Amount Grossed Today:

### Screen Description

This page is designed for the manager. It will tell the manager how well the company did on a daily basis. This is useful so the user can see whether the company made a profit or a loss. It will show the user how many parts they sold, how many parts they did not sell, and the amount grossed on that day.

Field	Description
Parts Sold Text field	Text field that displays the parts sold
Parts Not Sold Text field	Text field that displays the parts that did not sell
Amount Grossed Text field	Text field that displays a profit or loss

Field	Table
Parts Sold Text field	getDateTime(now) parts_sold
Parts Not Sold Text field	getDateTime(now) parts_in_stock
Amount Grossed Text field	getDateTime(now) parts_sold*part_cost

## Weekly Reports

Parts Sold this Week:

--

Parts that did not Sell:

--

Amount Grossed this Week:

--

### Screen Description

This page is designed for the manager. It will tell the manager how well the company did on a weekly basis. This is useful so the user can see whether the company made a profit or a loss. It will show the user how many parts they sold, how many parts they did not sell, and the amount grossed on that week.

Field	Description
Parts Sold Text field	Text field that displays the parts sold
Parts Not Sold Text field	Text field that displays the parts that did not sell
Amount Grossed Text field	Text field that displays a profit or loss

Field	Table
Parts Sold Text field	getDateTime(now+7) parts_sold
Parts Not Sold Text field	getDateTime(now+7) parts_in_stock
Amount Grossed Text field	getDateTime(now+7) parts_sold*part_cost



## Monthly Reports

Parts Sold this Month:

Parts that did not Sell:

Amount Grossed this Month:

### Screen Description

This page is designed for the manager. It will tell the manager how well the company did on a monthly basis. This is useful so the user can see whether the company made a profit or a loss. It will show the user how many parts they sold, how many parts they did not sell, and the amount grossed on that month.

Field	Description
Parts Sold Text field	Text field that displays the parts sold
Parts Not Sold Text field	Text field that displays the parts that did not sell
Amount Grossed Text field	Text field that displays a profit or loss

Field	Table
Parts Sold Text field	getDateTime(now+30) parts_sold
Parts Not Sold Text field	getDateTime(now+30) parts_in_stock
Amount Grossed Text field	getDateTime(now+30) parts_sold*part_cost

## Yearly Reports

Parts Sold this Year:

Parts that did not Sell:

Amount Grossed this Year:

### Screen Description

This page is designed for the manager. It will tell the manager how well the company did on a yearly basis. This is useful so the user can see whether the company made a profit or a loss. It will show the user how many parts they sold, how many parts they did not sell, and the amount grossed on that yearly.

Field	Description
Parts Sold Text field	Text field that displays the parts sold
Parts Not Sold Text field	Text field that displays the parts that did not sell
Amount Grossed Text field	Text field that displays a profit or loss

Field	Table
Parts Sold Text field	getDateTime(now+365) parts_sold
Parts Not Sold Text field	getDateTime(now+365) parts_in_stock
Amount Grossed Text field	getDateTime(now+365) parts_sold*part_cost

# Employees

View Current Employees

Add New Employee

### **Screen Description**

This page is designed for the manager to view his or her employees. The user can view their current employees and update and delete them. They can also add a new employee. This is useful when an employee's information changes, an employee is terminated, or an employee is hired.

<b>Field</b>	<b>Description</b>
View Current Employees Button	Button to take user to edit their current employees
Add New Employee Button	Button to take user to add a new employee

<b>Field</b>	<b>Table</b>
View Current Employees Button	Employees
Add New Employee Button	Employees

## Employee Information

Employee Name:

Employee Phone Number:

Employee Address:

Employee State:

Employee Zip:

Employee Hire Date:

Position Name:

### Screen Description

This is a page designed to manage current employees. A drop down list will display the names of all employees. Through the auto post back method, the employee's name, phone number, address, state, zip, hire date, and position will be displayed in text fields. The manager can then update this information or delete the employee all together

Field	Description
Employee Name Drop Down List	Drop Down List that displays all employee's names
Employee Name Text field	Text field to display employee's name (useful when an employee has to change his/her name)
Employee Phone Number Text field	Text field that displays the employee's phone number
Employee Address Text field	Text field that displays the employee's address
Employee State Text field	Text field that displays the employee's state
Employee Zip Text field	Text field that displays the employee's zip
Employee Hire Date Text field	Text field that displays the date the employee was hired
Position Name Text field	Text field to display the position the employee currently holds
Update Button	Button that allows the user to update with new information on the employee
Delete Button	Button that allows the user to remove the employee from their system

Field	Table
Employee Name Drop Down List	Employee_name
Employee Name Text field	Employee_name
Employee Phone Number Text field	Employee_number
Employee Address Text field	Employee_address



Employee State Text field	Employee_state
Employee Zip Text field	Employee_state
Employee Hire Date Text field	Employee_hire_date
Position Name Text field	Position_name
Update Button	Employee, position
Delete Button	Employee, position

## Add Employee

Employee Name:

Employee Phone Number:

Employee Address:

Employee State:

Employee Zip:

Position Name:

Add

### Screen Description

This page is designed to allow the manager to add new employees to the company. The manager will have to input basic information such as the employee name, phone number, address, state, zip, and position they will hold. By Clicking the add button, the new employee will be added to the system.

Field	Description
Employee Name Text field	Text field to input the employee's name
Employee Phone Number Text field	Text field to input the employee's phone number
Employee Address Text field	Text field to input the employee's address
Employee State Text field	Text field to input the employee's state
Employee Zip Text field	Text field to input the employee's zip code
Position Name Text field	Text field to input the position the employee will hold
Add Button	Button to add the employee to the system

Field	Table
Employee Name Text field	Employee_name
Employee Phone Number Text field	Employee_number
Employee Address Text field	Employee_address
Employee State Text field	Employee_state
Employee Zip Text field	Employee_zip
Position Name Text field	Position_name
Add Button	Employee, position

## Customers

Look Up Customer

Add Customer

### Screen Description

This page is designed so that both the manager and employees can view current customers as well as add new ones. By clicking either the Look-Up Customer or Add Customer button, the user will be taken to each respected page which will be shown in the following pages

Field	Description
Look Up Customer Button	Button that takes the user to the Look Up Customer Page
Add Customer Button	Button that takes the user to the Add Customer Page

Field	Table
Look Up Customer Button	Customers
Add Customer Button	Customers

## Customer Look-Up

Customer's Name:

Customer's Address:

Customer's State:

Customer's Zip:

Customer's Number:

Customer's Email:

Update

Delete

Look Up Credit Card

Look Up Vehicle

Look Up Insurance

### Screen Description

This page is designed for view current customers in the system. A drop down list using auto post back will display a list of the current customer's names. Once a customer is selected, the customer's name, address, state, zip, phone number, and email will be displayed to the user. The user can then update or delete this information. The bottom three buttons will allow the user to look up the customer's credit card, vehicle, or insurance.

Field	Description
Customer Name Drop Down List	Drop Down List that displays a list of all current customers
Customer's Name Text field	Text field that displays the customer's name
Customer's Address Text field	Text field that displays the customer's address
Customer's State Text field	Text field that displays the customer's state
Customer's Zip Text field	Text field that displays the customer's zip code
Customer's Number Text field	Text field that displays the customer's phone number
Customer's Email Text field	Text field that displays the customer's email address
Update Button	Button to allow the user to update with new information
Delete Button	Button to allow the user to delete a customer's information
Look Up Credit Card Button	Button that allows the user to look up the customer's credit card
Look Up Vehicle Button	Button that allows the user to look up the customer's vehicle
Look Up Insurance Button	Button that allows the user to look up the customer's insurance

Field	Table
Customer Name Drop Down List	Customer_name
Customer's Name Text field	Customer_name
Customer's Address Text field	Customer_address
Customer's State Text field	Customer_state
Customer's Zip Text field	Customer_zip
Customer's Number Text field	Customer_card_number
Customer's Email Text field	Customer_email
Update Button	Customers
Delete Button	Customers
Look Up Credit Card Button	Credit_card
Look Up Vehicle Button	Vehicle
Look Up Insurance Button	insurance



## Credit Card Information

Card Number:

Card Type:

CVS Number:

Expiration Date:

Card Name:

### Screen Description

This page is designed so that the manager or employee can look up a customer's credit card information. A drop down list using auto post back will list the current customers. After the user has made their selection, the customer's credit card number, type, CVS number, expiration date, and card's name will be displayed.

Field	Description
Customer's Name Drop Down List	Drop Down List that list the customer's names
Card Number Text field	Text field that displays the credit card's number
Card Type Text field	Text field that displays the credit card's type
CVS Type Text field	Text field that displays the cvs number
Expiration Date Text field	Text field that displays the expiration date of the credit card
Card Name Text field	Text field that displays the card's name (MasterCard, visa, etc.)

Field	Table
Customer's Name Drop Down List	Customer_name
Card Number Text field	Card_number
Card Type Text field	Card_type
CVS Type Text field	Cvs_number
Expiration Date Text field	Expiration_date
Card Name Text field	Card_name

## Customer's Vehicle Information

Make:

Model:

Year:

### Screen Description

This page is designed to look up a customer's vehicle information. A drop down list using the auto post back method will display a list of customers. Once a customer is selected, the make, model, and year of their vehicle will be displayed.

Field	Description
Customer's Name Drop Down List	Drop Down List that displays a list of the current customers
Make Text field	Text field that displays the make of the vehicle
Model Text field	Text field that displays the model of the vehicle
Year Text field	Text field that displays the year of the vehicle

Field	Description
Customer's Name Drop Down List	Customer_name
Make Text field	Make_name
Model Text field	Model_name
Year Text field	year

# Insurance Information

Insurance Name:

Insurance Contact Name:

Insurance Contact Phone Number:

Insurance Address:

Insurance State:

Insurance Zip:

### Screen Description

This page is designed to view the customer's insurance information. A drop down list using auto post back will display a list of customer's names. By selecting a customer, their insurance's name, contact name, contact's phone number, address, state, and zip code will be displayed to the user.

Field	Description
Customer's Name Drop Down List	Drop Down List that displays a list of current customers
Insurance Name Text field	Text field that displays the insurance's name
Insurance Contact Name Text field	Text field that displays the insurance's contact name
Insurance Contact Phone Number Text field	Text field that displays the insurances contact's phone number
Insurance Address Text field	Text field that displays the insurance's address
Insurance State Text field	Text field that displays the insurance's state
Insurance Zip Text field	Text field that displays the insurance's zip code

Field	Description
Customer's Name Drop Down List	Customer_name
Insurance Name Text field	Insurance_name
Insurance Contact Name Text field	Contact_name
Insurance Contact Phone Number Text field	Contact_phone_number
Insurance Address Text field	Insurance_address
Insurance State Text field	Insurance_state
Insurance Zip Text field	Insurance_zip

## Add Customer

Customer's Name:

Customer's Address:

Customer's State:

Customer's Zip:

Customer's Number:

Customer's Email:

### Screen Description

This page is designed to add new customers to the system. By inputting the customer's name, address, state, zip, phone number, and email into a text field, the user can then add the customer into the system. From here, the user can add a new credit card, vehicle, or insurance information for the customer.

Field	Description
Customer's Name Text field	Text field that displays the customer's name
Customer's Address Text field	Text field that displays the customer's address
Customer's State Text field	Text field that displays the customer's state
Customer's Zip Text field	Text field that displays the customer's zip code
Customer's Number Text field	Text field that displays the customer's phone number
Customer's Email Text field	Text field that displays the customer's email address
Add Customer Button	Button to add a new customer into the system
Add Credit Card Button	Button to add a customer's credit card information into the system
Add Vehicle Button	Button to add a customer's vehicle into the system.
Add Insurance Button	Button to add a customer's insurance information into the system

Field	Table
Customer's Name Text field	Customer_name
Customer's Address Text field	Customer_address
Customer's State Text field	Customer_state
Customer's Zip Text field	Customer_zip
Customer's Number Text field	Customer_phone_number



Customer's Email Text field	Cusomter_email
Add Customer Button	Customer
Add Credit Card Button	Customer_card
Add Vehicle Button	Vehicle
Add Insurance Button	insurance

## Add Credit Card

Customer Name:

Card Number:

Card Type:

CVS Number:

Expiration Date:

Card Name:

Add Credit Card

### Screen Description

This page is designed so that the user can input a new credit card for the customer. By entering the customer's name, credit card number, card type, CVS number, expiration date, and card name, and clicking add credit card, the information will be added to the system.

Field	Description
Customer Name Text field	Text field to input the customer's name
Card Number Text field	Text field to input the credit card's number
Card Type Text field	Text field to input the credit card's type
CVS Type Text field	Text field to input the credit card's cvs number
Expiration Date Text field	Text field to input the credit card's expiration date
Card Name Text field	Text field to input the name on the credit card
Add Credit Card Button	Button to add information to the system

Field	Table
Customer Name Text field	Customer_name
Card Number Text field	Card_number
Card Type Text field	Card_type
CVS Type Text field	Cvs_number
Expiration Date Text field	Expiration_date
Card Name Text field	Card_name
Add Credit Card Button	Customer_card

# Add a Vehicle

Make:

Model:

Year:

Add Vehicle

### Screen Description

This page is designed to add new customer's vehicles to the system. By inputting the customer's vehicle make, model, and year, and clicking add vehicle, the vehicle will be added to the system.

Field	Description
Make Text field	Text field that reads the input of the vehicle's make
Model Text field	Text field that reads the input of the vehicle's model
Year Text field	Text field that reads the input of the vehicle's year
Add Vehicle Button	Button that adds the information to the system

Field	Table
Make Text field	Make_name
Model Text field	Model_name
Year Text field	Year
Add Vehicle Button	vehicle

# Add Insurance

Insurance Name:

Insurance Contact Name:

Insurance Contact Phone Number:

Insurance Address:

Insurance State:

Insurance Zip:

Add Insurance

### Screen Description

This page is designed to add insurance for a customer. By inputting the insurance's name, contact name, contact phone number, address, state, and zip, and clicking the add insurance button, the information will be added to the system.

Field	Description
Insurance Name Text field	Text field that reads the input of the insurance's name
Insurance Contact Name Text field	Text field that reads the input of the insurance contact's name.
Insurance Contact Phone Number Text field	Text field that reads the input of the insurance contact's phone number.
Insurance Address Text field	Text field that reads the input of the insurance's address
Insurance State Text field	Text field that reads the input of the insurance's state
Insurance Zip Text field	Text field that reads the input of the insurance's zip code.
Add Insurance Button	Button that adds the information to the system

Field	Table
Insurance Name Text field	Insurance_name
Insurance Contact Name Text field	Contact_name
Insurance Contact Phone Number Text field	Contact_number
Insurance Address Text field	Insurance_address
Insurance State Text field	Insurance_state
Insurance Zip Text field	Insurance_zip
Add Insurance Button	insurance

## Discounts

Create New Discount

View Existing Discounts

View Expired Discounts



### Screen Description

This page is designed so that the manager can add new discounts, view existing discounts, and view expired discounts. By clicking each button, the user will be taken to the respected page.

Field	Description
Create New Discount Button	Button that takes the user to the create new discounts page
View Existing Discounts Button	Button that takes the user to the view existing discounts page
View Expired Discounts Button	Button that takes the user to the view expired discounts page

Field	Table
Create New Discount Button	Discounts
View Existing Discounts Button	Discounts
View Expired Discounts Button	Discounts

# New Discount

Discount Name:

Discount Effective Date:

Discount Expiration Date:

Discount Amount Percentage:

Add

### Screen Description

This page is designed for the manager so that he or she can add new discounts to the system. By inputting the discount's name, effective date, expiration date, and amount percentage, and clicking the add button, a new discount will be added to the system.

Field	Description
Discount Name Text field	Text field that reads the input of the discount's name
Discount Effective Date Text field	Text field that reads the input of the discount's start effectiveness date
Discount Expiration Date Text field	Text field that reads the input of the discount's expiration date
Discount Amount Percentage Text field	Text field that reads the input of the percentage amount that the discount takes off.
Add Button	Button that adds the discount to the system

Field	Table
Discount Name Text field	Discount_name
Discount Effective Date Text field	Discount_effective_date
Discount Expiration Date Text field	Discount_expiration_date
Discount Amount Percentage Text field	Discount_percentage
Add Button	Discount

# Existing Discount

Discount Name:

Discount Effective Date:

Discount Expiration Date:

Discount Amount Percentage:

### Screen Description

This page is designed to view the current discount that the company is offering. It will display the discount's name, discount's effective date, discount's expiration date, and discount's amount percentage.

Field	Description
Discount Name Text field	Text field that displays the discount's name
Discount Effective Date Text field	Text field that displays the discount's date that it begins to be effective
Discount Expiration Date Text field	Text field that displays the discounts expiration date
Discount Amount Percentage Text field	Text field that displays the amount percentage that the discount takes off

Field	Table
Discount Name Text field	Discount_name
Discount Effective Date Text field	Discount_effective_date
Discount Expiration Date Text field	Discount_expiration_date
Discount Amount Percentage Text field	Discount_percentage

## Expired Discount

Discount Name:

Discount Effective Date:

Discount Expiration Date:

Discount Amount Percentage:

### Screen Description

This page is designed to view expired discounts. The page will display the discount's name, effective date, expiration date, and amount percentage to the user. This is useful so that discounts will not be use too often near each other.

Field	Description
Discount Name Text field	Text field that displays the discount's name
Discount Effective Date Text field	Text field that displays the discount's beginning effectiveness date
Discount Expiration Date Text field	Text field that displays the discount's expiration date.
Discount Amount Percentage	Text field that displays the discount's percentage amount taken off

Field	Table
Discount Name Text field	Discount_name
Discount Effective Date Text field	Discount_effective_date
Discount Expiration Date Text field	Discount_expiration_date
Discount Amount Percentage Text field	Discount_percentage

# Suppliers

View Suppliers

View Parts From Suppliers

Add Supplier



### **Screen Description**

This page is designed for the manager to view his or her suppliers. By clicking the view suppliers, view parts from suppliers, or suppliers button, it will take the user to each of their respective pages. The view supplier's page will allow the user to view all information on current suppliers. The view parts from suppliers will allow the user to view all the parts from a specific supplier. The add supplier page allows the user to add suppliers

<b>Field</b>	<b>Description</b>
View Suppliers Button	Button that takes the user to view the suppliers page
View Parts From Suppliers Button	Button that takes the user to view the parts from the suppliers page
Add Supplier Button	Button that takes the user to the add a new supplier page

<b>Field</b>	<b>Table</b>
View Suppliers Button	Suppliers
View Parts From Suppliers Button	Suppliers, parts
Add Supplier Button	Suppliers

## View Suppliers

Company Name:

Contact Name:

Contact Phone Number:

Contact Address:

Contact State:

Contact Zip:

Update

Delete

### Screen Description

This page is designed so that the user can see the current suppliers. A drop down list using auto post back will allow the user to select the supplier's name from a list.

Field	Description
Company Name Drop Down List	Drop down list that displays all supplier's names
Company Name Text field	Text field that displays the company's name
Contact Name Text field	Text field that displays the company's contact name
Contact Phone Number Text field	Text field that displays the company's contact phone number
Contact Address Text field	Text field that displays the contact's address
Contact State Text field	Text field that displays the contact's state
Contact Zip Text field	Text field that displays the contact's zip code
Update Button	Button that updates the data in the text fields
Delete Button	Button that removes the supplier from the system

Field	Table
Company Name Drop Down List	Company_name
Company Name Text field	Company_name
Contact Name Text field	Contact_name
Contact Phone Number Text field	Contact_phone_number
Contact Address Text field	Contact_address
Contact State Text field	Contact_state
Contact Zip Text field	Contact_zip
Update Button	Suppliers
Delete Button	Suppliers

# Part's From Suppliers

▼

Part Name:

Part's In Stock

Part Cost:

### Screen Description

This page is designed so that the user can see the part's from suppliers. It allows the user to select the supplier from a drop down list. Then through the auto post back method, the part's name, parts in stock, and the part cost from the supplier will be displayed to the user.

Field	Description
Supplier's Name Drop Down List	Drop Down List that displays a list of all supplier's names
Part Name Text field	Text field that displays the name of the part
Part's In Stock Text field	Text field that displays the amount of the part that is in the stock
Part Cost Text field	Text field that displays the price of the part

Field	Table
Supplier's Name Drop Down List	Suppliers_name
Part Name Text field	Part_name
Part's In Stock Text field	Parts_in_stock
Part Cost Text field	Part_cost

## Add Supplier

Company Name:

Contact Name:

Contact Phone Number:

Contact Address:

Contact State:

Contact Zip:

Add Supplier

### Screen Description

This page is designed so that the user can add a new supplier to the company. By entering in the company name, contact's name, contact's phone number, contact's address, contact's state, and contact's zip code and clicking the add supplier button, a new supplier will be added to the company.

Field	Description
Company Name Text field	Text field that allows the user to input the company's name
Contact Name Text field	Text field that allows the user to input the contact's name
Contact Phone Number Text field	Text field that allows the user to input the contact's phone number
Contact Address Text field	Text field that allows the user to input the contact's address
Contact State Text field	Text field that allows the user to input the contact's state
Contact Zip Text field	Text field that allows the user to input the contact's zip code
Add Supplier Button	Button to add the supplier's information to the system

Field	Table
Company Name Text field	Company_name
Contact Name Text field	Contact_name
Contact Phone Number Text field	Contact_phone_number
Contact Address Text field	Contact_address
Contact State Text field	Contact_state
Contact Zip Text field	Contact_zip
Add Supplier Button	supplier

# Jobs Currently In Service

Customer Name:

Vehicle Name:

Start Date:

End Date:

Employee Name:



### Screen Description

This page is designed so that the user can see the job currently being done in the company. This is useful for the employees and manager to see who is doing what jobs at what time. A drop down list with all the Jobs being done is displays a list. Then then through auto post back, the customer's name of the job, the vehicle's name, the start date, the end date, and the employee's name is all displayed.

Field	Description
Jobs Drop Down List	Drop down list that displays all the jobs currently in service
Customer Name Text field	Text field that displays the customer's name
Vehicle Name Text field	Text field that displays the Vehicle's name
Start Date Text field	Text field that displays when the job was started
End Date Text field	Text field that displays when the job will end
Employee Name Text field	Text field that displays the employee that is working on the job

Field	Table
Jobs Drop Down List	Jobs
Customer Name Text field	Customer_name
Vehicle Name Text field	Vehicle_name
Start Date Text field	Start_date
End Date Text field	End_date
Employee Name Text field	Employee_name

## Position Information

Add Position

Update Position

View Employee Position

### Screen Description

This page is designed so that the user can view information about the positions of the company. The user can select whether they want to add a new position, update a position, and view the employee's position.

Field	Description
Add Position Button	Button to add a new position
Update Position Button	Button to update a position
View Employee Position Button	Button to view the employee's position

Field	Description
Add Position Button	Position
Update Position Button	Position
View Employee Position Button	position

## Add Position

Position Name:

Position Wage:

Add

### Screen Description

This page is designed so that the user can add a position. This is useful whenever the manager decides to add a new employee position to the company. By inputting in the position's name and wage and clicking add, a position will be added to the system.

Field	Description
Position Name Text field	Text field that reads input of the position's name
Position Wage Text field	Text field that reads input of the position's wage
Add Button	Button that adds the position to the system

Field	Description
Position Name Text field	Position_name
Position Wage Text field	Position_wage
Add Button	Position

# Update Position

▼

Position Name:

Position Wage:

Update

Delete

### Screen Description

This page is designed so that the user can see the part's from suppliers. It allows the user to select the supplier from a drop down list. Then through the auto post back method, the part's name, parts in stock, and the part cost from the supplier will be displayed to the user.

Field	Description
Position Drop Down List	Drop down list that list the names of all the positions
Position Name Text field	Text field that displays the name of the position
Position Wage Text field	Text field that displays the wage of the position
Update Button	Button that updates the system with new information
Delete Button	Button that deletes the position from the system

Field	Table
Position Drop Down List	Position
Position Name Text field	Position_name
Position Wage Text field	Position_wage
Update Button	Position
Delete Button	position

## Employee's Position

Employee Name:

Position Name:

Position Wage:



### Screen Description

This page is designed so that the user can view which employee works at which position. From a drop down list using auto post back, the user will select the employee's name. The system will then display the employee's name, employee's position, and the wage they make.

Field	Description
Employee's Name Drop Down List	Drop Down List that displays a list of all employees
Employee Name Text field	Text field that displays the employee's name
Position Name Text field	Text field that displays the employee's position name
Position Wage Text field	Text field that displays the employee's position wage

Field	Table
Employee's Name Drop Down List	Employee
Employee Name Text field	Employee_name
Position Name Text field	Position_name
Position Wage Text field	Position_wage

## Check Out

Customer Name:

Service:

Discount:

### Screen Description

This page is designed so that the user can check the customer out. By selecting the customer's name, the service, and any available discounts, and selecting the place order button, the user will check the customer out.

Field	Description
Customer Name Drop Down List	Drop Down List that displays a list of all customers
Service Drop Down List	Drop Down List that displays a list of all services
Discount Drop Down List	Drop Down List that displays a list of all available discounts
Place Order Button	Button that places the order and charges the customer's credit card

Field	Table
Customer Name Drop Down List	Customer_name
Service Drop Down List	Service_name
Discount Drop Down List	Discount_name
Place Order Button	Credit_card

## Main Menu

Inventory

Suppliers

Customer

Discounts

Current Jobs

Check Out

### **Screen Description**

This page is designed for employees. When the employee logs in, this is the page they will be taken to. The employee can check the inventory, view customers, current jobs, suppliers, discounts, and check out. Each button take the user to its respected page.

Field	Description
Inventory Button	Button that takes the user to the inventory page
Customer Button	Button that takes the user to the customer page
Current Jobs Button	Button that takes the user to the current jobs page
Suppliers Button	Button that takes the user to the suppliers page
Discount Button	Button that takes the user to the discounts page
Check Out Button	Button that takes the user to the checkout page

Field	Table
Inventory Button	Inventory
Customer Button	Customers
Current Jobs Button	Jobs
Suppliers Button	Suppliers
Discount Button	Discounts
Check Out Button	Suppliers, discounts, parts

## Inventory

Parts On Order

Part Selection

Check Stock

### **Screen Description**

This is the inventory page. It is for the employee. From here the employee can view parts on order, view parts in the inventory, and check the stock of the inventory.

<b>Field</b>	<b>Description</b>
Parts on Order	Button to view parts on order
Part Selection	Button to view the part
Check Stock	Button to check the stock of the inventory

<b>Field</b>	<b>Description</b>
Parts on Order	parts
Part Selection	Parts
Check Stock	parts

## Parts in Inventory

Supplier Name:

Model of the Vehicle the Part is for:

Make of the Vehicle the Part is for:

Parts In Stock:

Part Cost:



### Screen Description

This page allows the manager to view the parts in the inventory. There is a drop down list for the user to select the part they would like to view. Through using the auto post back method, the system will display the supplier the part is from, the make and model of the vehicle the part is for, the parts in stock, and the cost of the part.

Field	Description
Parts Drop Down List	List of the parts in the inventory
Supplier Name Text field	Text field to display the supplier's name
Model of the Vehicle Text field	Text field to display the model of the vehicle
Make of the Vehicle Text field	Text field to display the make of the vehicle
Parts in Stock Text field	Text field to display the parts in stock
Part Cost Text field	Text field to display the part's cost

Field	Table
Parts Drop Down List	Part_name
Supplier Name Text field	Supplier_name
Model of the Vehicle Text field	Model_name
Make of the Vehicle Text field	Make_name
Parts in Stock Text field	Parts_in_stock
Part Cost Text field	Part_cost

## Check Stock

Items In Stock

Part Name	Number in Stock	Item Price

### Screen Description

This page will allow the manager to check the stock of the inventory. It will display the stock to the user through a table. The stock will automatically be displayed in the table with a select statement. It will display the part's name, the number of items in stock, and the items price.

Field	Description
Part Name Table Column	Table Column to display the part's name
Number in Stock Table Column	Table Column to display the number of part's in stock
Item Price Table Column	Table Column to display the price of the part

Field	Table
Part Name Table Column	Part_name
Number in Stock Table Column	Parts_in_stock
Item Price Table Column	Price_cost

## Parts Ordered

Order Quantity:

Order Date:

Order Cost:

### **Screen Description**

This page allows the manager to see the parts that are currently being ordered. The user will select the part that is currently on order from a drop down list. Then through auto post back, the order quantity, order due date, and order cost will be displayed to the user.

Field	Description
Part's Name Drop Down List	Drop Down List to display the name of the parts that are currently being ordered.
Order Quantity Text field	Text field to display the amount ordered
Order Due Date Text field	Text field to display the expected date of arrival of the part
Order Cost Text field	Text field to display how much the order cost

Field	Table
Part's Name Drop Down List	Part_name
Order Quantity Text field	order_quantity
Order Due Date Text field	Order_date
Order Cost Text field	order_cost

# Customers

Look Up Customer

Add Customer

### **Screen Description**

This page is designed so that both the manager and employees can view current customers as well as add new ones. By clicking either the Look-Up Customer or Add Customer button, the user will be taken to each respected page which will be shown in the following pages

<b>Field</b>	<b>Description</b>
Look Up Customer Button	Button that takes the user to the Look Up Customer Page
Add Customer Button	Button that takes the user to the Add Customer Page

<b>Field</b>	<b>Table</b>
Look Up Customer Button	Customers
Add Customer Button	Customers

## Customer Look-Up

Customer's Name:

Customer's Address:

Customer's State:

Customer's Zip:

Customer's Number:

Customer's Email:

Update

Delete

Look Up Credit Card

Look Up Vehicle

Look Up Insurance



### Screen Description

This page is designed for view current customers in the system. A drop down list using auto post back will display a list of the current customer's names. Once a customer is selected, the customer's name, address, state, zip, phone number, and email will be displayed to the user. The user can then update or delete this information. The bottom three buttons will allow the user to look up the customer's credit card, vehicle, or insurance.

Field	Description
Customer Name Drop Down List	Drop Down List that displays a list of all current customers
Customer's Name Text field	Text field that displays the customer's name
Customer's Address Text field	Text field that displays the customer's address
Customer's State Text field	Text field that displays the customer's state
Customer's Zip Text field	Text field that displays the customer's zip code
Customer's Number Text field	Text field that displays the customer's phone number
Customer's Email Text field	Text field that displays the customer's email address
Update Button	Button to allow the user to update with new information
Delete Button	Button to allow the user to delete a customer's information
Look Up Credit Card Button	Button that allows the user to look up the customer's credit card
Look Up Vehicle Button	Button that allows the user to look up the customer's vehicle
Look Up Insurance Button	Button that allows the user to look up the customer's insurance

Field	Table
Customer Name Drop Down List	Customer_name
Customer's Name Text field	Customer_name
Customer's Address Text field	Customer_address
Customer's State Text field	Customer_state
Customer's Zip Text field	Customer_zip
Customer's Number Text field	Customer_card_number
Customer's Email Text field	Customer_email
Update Button	Customers
Delete Button	Customers
Look Up Credit Card Button	Credit_card
Look Up Vehicle Button	Vehicle
Look Up Insurance Button	insurance

## Credit Card Information

Card Number:

Card Type:

CVS Number:

Expiration Date:

Card Name:

### Screen Description

This page is designed so that the manager or employee can look up a customer's credit card information. A drop down list using auto post back will list the current customers. After the user has made their selection, the customer's credit card number, type, cvs number, expiration date, and card's name will be displayed.

Field	Description
Customer's Name Drop Down List	Drop Down List that list the customer's names
Card Number Text field	Text field that displays the credit card's number
Card Type Text field	Text field that displays the credit card's type
CVS Type Text field	Text field that displays the cvs number
Expiration Date Text field	Text field that displays the expiration date of the credit card
Card Name Text field	Text field that displays the card's name (MasterCard, visa, etc.)

Field	Table
Customer's Name Drop Down List	Customer_name
Card Number Text field	Card_number
Card Type Text field	Card_type
CVS Type Text field	CVS_number
Expiration Date Text field	Expiration_date
Card Name Text field	Card_name

## Customer's Vehicle Information

Make:

Model:

Year:

### **Screen Description**

This page is designed to look up a customer's vehicle information. A drop down list using the auto post back method will display a list of customers. Once a customer is selected, the make, model, and year of their vehicle will be displayed.

<b>Field</b>	<b>Description</b>
Customer's Name Drop Down List	Drop Down List that displays a list of the current customers
Make Text field	Text field that displays the make of the vehicle
Model Text field	Text field that displays the model of the vehicle
Year Text field	Text field that displays the year of the vehicle

<b>Field</b>	<b>Table</b>
Customer's Name Drop Down List	Customer_name
Make Text field	Make_name
Model Text field	Model_name
Year Text field	year

## Insurance Information

Insurance Name:

Insurance Contact Name:

Insurance Contact Phone Number:

Insurance Address:

Insurance State:

Insurance Zip:

### **Screen Description**

This page is designed to view the customer's insurance information. A drop down list using auto post back will display a list of customer's names. By selecting a customer, their insurance's name, contact name, contact's phone number, address, state, and zip code will be displayed to the user.

<b>Field</b>	<b>Description</b>
Customer's Name Drop Down List	Drop Down List that displays a list of current customers
Insurance Name Text field	Text field that displays the insurance's name
Insurance Contact Name Text field	Text field that displays the insurance's contact name
Insurance Contact Phone Number Text field	Text field that displays the insurance's contact's phone number
Insurance Address Text field	Text field that displays the insurance's address
Insurance State Text field	Text field that displays the insurance's state
Insurance Zip Text field	Text field that displays the insurance's zip code

<b>Field</b>	<b>Table</b>
Customer's Name Drop Down List	Customer_name
Insurance Name Text field	Insurance_name
Insurance Contact Name Text field	Contact_name
Insurance Contact Phone Number Text field	Contact_phone_number
Insurance Address Text field	Insurance_address
Insurance State Text field	Insurance_state
Insurance Zip Text field	Insurance_zip



## Add Customer

Customer's Name:

Customer's Address:

Customer's State:

Customer's Zip:

Customer's Number:

Customer's Email:

### Screen Description

This page is designed to add new customers to the system. By inputting the customer's name, address, state, zip, phone number, and email into a text field, the user can then add the customer into the system. From here, the user can add a new credit card, vehicle, or insurance information for the customer.

Field	Description
Customer's Name Text field	Text field that displays the customer's name
Customer's Address Text field	Text field that displays the customer's address
Customer's State Text field	Text field that displays the customer's state
Customer's Zip Text field	Text field that displays the customer's zip code
Customer's Number Text field	Text field that displays the customer's phone number
Customer's Email Text field	Text field that displays the customer's email address
Add Customer Button	Button to add a new customer into the system
Add Credit Card Button	Button to add a customer's credit card information into the system
Add Vehicle Button	Button to add a customer's vehicle into the system.
Add Insurance Button	Button to add a customer's insurance information into the system

Field	Table
Customer's Name Text field	Customer_name
Customer's Address Text field	Customer_address
Customer's State Text field	Customer_state
Customer's Zip Text field	Customer_zip
Customer's Number Text field	Customer_phone_number

Customer's Email Text field	Customer_email
Add Customer Button	Customer
Add Credit Card Button	customer_card
Add Vehicle Button	vehicle
Add Insurance Button	insurance

## Add Credit Card

Customer Name:

Card Number:

Card Type:

CVS Number:

Expiration Date:

Card Name:

Add Credit Card

### Screen Description

This page is designed so that the user can input a new credit card for the customer. By entering the customer's name, credit card number, card type, cvs number, expiration date, and card name, and clicking add credit card, the information will be added to the system.

Field	Description
Customer Name Text field	Text field to input the customer's name
Card Number Text field	Text field to input the credit card's number
Card Type Text field	Text field to input the credit card's type
CVS Type Text field	Text field to input the credit card's cvs number
Expiration Date Text field	Text field to input the credit card's expiration date
Card Name Text field	Text field to input the name on the credit card
Add Credit Card Button	Button to add information to the system

Field	Table
Customer Name Text field	Customer_name
Card Number Text field	Card_number
Card Type Text field	Card_type
CVS Type Text field	Cvs_type
Expiration Date Text field	Expiration_date
Card Name Text field	Card_name
Add Credit Card Button	Customer_card

## Add a Vehicle

Make:

Model:

Year:

Add Vehicle

### Screen Description

This page is designed to add new customer's vehicles to the system. By inputting the customer's vehicle make, model, and year, and clicking add vehicle, the vehicle will be added to the system.

Field	Description
Make Text field	Text field that reads the input of the vehicle's make
Model Text field	Text field that reads the input of the vehicle's model
Year Text field	Text field that reads the input of the vehicle's year
Add Vehicle Button	Button that adds the information to the system

Field	Table
Make Text field	Make_name
Model Text field	Model_name
Year Text field	Year
Add Vehicle Button	vehicle

# Add Insurance

Insurance Name:

Insurance Contact Name:

Insurance Contact Phone Number:

Insurance Address:

Insurance State:

Insurance Zip:

Add Insurance



### **Screen Description**

This page is designed to add insurance for a customer. By inputting the insurance's name, contact name, contact phone number, address, state, and zip, and clicking the add insurance button, the information will be added to the system.

<b>Field</b>	<b>Description</b>
Insurance Name Text field	Text field that reads the input of the insurance's name
Insurance Contact Name Text field	Text field that reads the input of the insurance contact's name.
Insurance Contact Phone Number Text field	Text field that reads the input of the insurance contact's phone number.
Insurance Address Text field	Text field that reads the input of the insurance's address
Insurance State Text field	Text field that reads the input of the insurance's state
Insurance Zip Text field	Text field that reads the input of the insurance's zip code.
Add Insurance Button	Button that adds the information to the system

<b>Field</b>	<b>Table</b>
Insurance Name Text field	Insurance_name
Insurance Contact Name Text field	Contact_name
Insurance Contact Phone Number Text field	Contact_phone_number
Insurance Address Text field	Insurance_address
Insurance State Text field	Insurance_state
Insurance Zip Text field	Insurance_zip
Add Insurance Button	insurance

## Discounts

[View Expired Discounts](#)

[View Existing Discounts](#)

### **Screen Description**

This page is designed so that employees can view existing discounts, and view expired discounts. By clicking each button, the user will be taken to the respected page.

<b>Field</b>	<b>Description</b>
View Existing Discounts Button	Button that takes the user to the view existing discounts page
View Expired Discounts Button	Button that takes the user to the view expired discounts page

<b>Field</b>	<b>Table</b>
View Existing Discounts Button	Discounts
View Expired Discounts Button	Discounts

## Existing Discount

Discount Name:

Discount Effective Date:

Discount Expiration Date:

Discount Amount Percentage:

### Screen Description

This page is designed to view the current discount that the company is offering. It will display the discount's name, discount's effective date, discount's expiration date, and discount's amount percentage.

Field	Description
Discount Name Text field	Text field that displays the discount's name
Discount Effective Date Text field	Text field that displays the discount's date that it begins to be effective
Discount Expiration Date Text field	Text field that displays the discounts expiration date
Discount Amount Percentage Text field	Text field that displays the amount percentage that the discount takes off

Field	Table
Discount Name Text field	Discount_name
Discount Effective Date Text field	Discount_effective_date
Discount Expiration Date Text field	Discount_expiration_date
Discount Amount Percentage Text field	Discount_percentage

## Expired Discount

Discount Name:

Discount Effective Date:

Discount Expiration Date:

Discount Amount Percentage:

### Screen Description

This page is designed to view expired discounts. The page will display the discount's name, effective date, expiration date, and amount percentage to the user. This is useful so that discounts will not be use too often near each other.

Field	Description
Discount Name Text field	Text field that displays the discount's name
Discount Effective Date Text field	Text field that displays the discount's beginning effectiveness date
Discount Expiration Date Text field	Text field that displays the discount's expiration date.
Discount Amount Percentage	Text field that displays the discount's percentage amount taken off

Field	Table
Discount Name Text field	Discount_name
Discount Effective Date Text field	Discount_effective_date
Discount Expiration Date Text field	Discount_expiration_date
Discount Amount Percentage	Discount_percentage

## Suppliers

[View Suppliers](#)

[View Parts From Suppliers](#)



### Screen Description

This page is designed for the employees to view his or her suppliers. By clicking the view suppliers, or view parts from suppliers, it will take the user to each of their respected pages. The view supplier's page will allow the user to view all information on current suppliers. The view parts from suppliers will allow the user to view all the parts from a specific supplier.

Field	Description
View Suppliers Button	Button that takes the user to view the suppliers page
View Parts From Suppliers Button	Button that takes the user to view the parts from the suppliers page

Field	Table
View Suppliers Button	Suppliers
View Parts From Suppliers Button	Suppliers

## View Suppliers

Company Name:

Contact Name:

Contact Phone Number:

Contact Address:

Contact State:

Contact Zip:

Update

Delete

### Screen Description

This page is designed so that the user can see the current suppliers. A drop down list using auto post back will allow the user to select the supplier's name from a list.

Field	Description
Company Name Drop Down List	Drop down list that displays all supplier's names
Company Name Text field	Text field that displays the company's name
Contact Name Text field	Text field that displays the company's contact name
Contact Phone Number Text field	Text field that displays the company's contact phone number
Contact Address Text field	Text field that displays the contact's address
Contact State Text field	Text field that displays the contact's state
Contact Zip Text field	Text field that displays the contact's zip code
Update Button	Button that updates the data in the text fields
Delete Button	Button that removes the supplier from the system

Field	Table
Company Name Drop Down List	Company_name
Company Name Text field	Company_name
Contact Name Text field	Contact_name
Contact Phone Number Text field	Contact_phone_number
Contact Address Text field	Contact_address
Contact State Text field	Contact_state
Contact Zip Text field	Contact_zip
Update Button	Suppliers
Delete Button	Suppliers

# Part's From Suppliers

Part Name:

Part's In Stock

Part Cost:

### Screen Description

This page is designed so that the user can see the part's from suppliers. It allows the user to select the supplier from a drop down list. Then through the auto post back method, the part's name, parts in stock, and the part cost from the supplier will be displayed to the user.

Field	Description
Supplier's Name Drop Down List	Drop Down List that displays a list of all supplier's names
Part Name Text field	Text field that displays the name of the part
Part's In Stock Text field	Text field that displays the amount of the part that is in the stock
Part Cost Text field	Text field that displays the price of the part

Field	Table
Supplier's Name Drop Down List	Supplier_name
Part Name Text field	Part_name
Part's In Stock Text field	Parts_in_stock
Part Cost Text field	Part_cost

## Jobs Currently In Service

Customer Name:

Vehicle Name:

Start Date:

End Date:

Employee Name:

### Screen Description

This page is designed so that the user can see the job currently being done in the company. This is useful for the employees and manager to see who is doing what jobs at what time. A drop down list with all the Jobs being done is displays a list. Then then through auto post back, the customer's name of the job, the vehicle's name, the start date, the end date, and the employee's name is all displayed.

Field	Description
Jobs Drop Down List	Drop down list that displays all the jobs currently in service
Customer Name Text field	Text field that displays the customer's name
Vehicle Name Text field	Text field that displays the Vehicle's name
Start Date Text field	Text field that displays when the job was started
End Date Text field	Text field that displays when the job will end
Employee Name Text field	Text field that displays the employee that is working on the job

Field	Table
Jobs Drop Down List	Jobs
Customer Name Text field	Customer_name
Vehicle Name Text field	Vehicle_name
Start Date Text field	Start_date
End Date Text field	End_date
Employee Name Text field	Employee_name

## Check Out

Customer Name:

Service:

Discount:



### Screen Description

This page is designed so that the user can check the customer out. By selecting the customer's name, the service, and any available discounts, and selecting the place order button, the user will check the customer out.

Field	Description
Customer Name Drop Down List	Drop Down List that displays a list of all customers
Service Drop Down List	Drop Down List that displays a list of all services
Discount Drop Down List	Drop Down List that displays a list of all available discounts
Place Order Button	Button that places the order and charges the customer's credit card

Field	Table
Customer Name Drop Down List	Customer_name
Service Drop Down List	Service_name
Discount Drop Down List	Discount_name
Place Order Button	Credit_card

# DETAILED REPORT DESCRIPTIONS

Report of all Customers of Rapid Response Auto Service

Customer Name	Address	State	Zip	Phone Number	Email
XXXX XXXXX	### XXXXXXXX XX	XX	#####	(###)-###-####	XXXXXX@XXXX.XXX
XXXX XXXXX	### XXXXXXXX XX	XX	#####	(###)-###-####	XXXXXX@XXXX.XXX
XXXX XXXXX	### XXXXXXXX XX	XX	#####	(###)-###-####	XXXXXX@XXXX.XXX
XXXX XXXXX	### XXXXXXXX XX	XX	#####	(###)-###-####	XXXXXX@XXXX.XXX

### Table Reference

Column Name	Description	Reference
Customer Name	Full name of the Customer	Customers Table (customer_name)
Address	Customer Address	Customers Table (customer_address)
State	Customers State of Residence	Customers Table (customer_state)
Zip	Zip code	Customers Table (customer_zip)
Phone Number	Customer phone number	Customers Table (customer_phone_number)
Email	Customer phone number	Customers Table (customer_email)

Report of all current employees of Rapid Response Auto Service

Employee Name	Address	State	Zip	Phone Number	Position Name	Hire Date	wage
XXXX XXXXX	### XXXXXXXX XX	XX	#####	(###)-###-####	XXXXXX	##/##/####	\$##.##
XXXX XXXXX	### XXXXXXXX XX	XX	#####	(###)-###-####	XXXXXX	##/##/####	\$##.##
XXXX XXXXX	### XXXXXXXX XX	XX	#####	(###)-###-####	XXXXXX	##/##/####	\$##.##
XXXX XXXXX	### XXXXXXXX XX	XX	#####	(###)-###-####	XXXXXX	##/##/####	\$##.##

## Table Reference

Column Name	Description	Reference
Employee Name	Employee full name	Employees Table (employee_name)
Address	Employee address	Employee Table (employee_address)
State	Employee state of residence	Employee Table (employee_state)
Zip	Employee zip code	Employee Table (employee_zip)
Phone Number	Employee personal phone number	Employee Table (employee_phone_number)
Position Name	Employee position in company	Employee_Positions Table (position_name)
Hire Date	Date employee was hired	Employee Table (hire_date)
wage	Employee pay	Employee Table (employee_wage)

Report of all past employees of Rapid Response Auto Service

Employee Name	Address	State	Zip	Phone Number	Position Name	Hire Date	End Date
XXXX XXXXX	### XXXXXXXX XX	XX	#####	(###)-###-####	XXXXXX	##/##/####	##/##/####
XXXX XXXXX	### XXXXXXXX XX	XX	#####	(###)-###-####	XXXXXX	##/##/####	##/##/####
XXXX XXXXX	### XXXXXXXX XX	XX	#####	(###)-###-####	XXXXXX	##/##/####	##/##/####
XXXX XXXXX	### XXXXXXXX XX	XX	#####	(###)-###-####	XXXXXX	##/##/####	##/##/####

## Table Reference

Column Name	Description	Reference
Employee Name	Employee full name	Employees Table (employee_name)
Address	Employee address	Employee Table (employee_address)
State	Employee state of residence	Employee Table (employee_state)
Zip	Employee zip code	Employee Table (employee_zip)
Phone Number	Employee personal phone number	Employee Table (employee_phone_number)
Position Name	Employee position in company	Employee_Positions Table (position_name)
Hire Date	Date employee was hired	Employee Table (hire_date)
End Date	Date employee left company	Employee Table (end_date)



# Customer Payment Transactions of Rapid Response Auto Service

Order Number	Customer Name	Date of Transaction	Payment
#####	XXXX XXXXX	##/##/####	\$##.##
#####	XXXX XXXXX	##/##/####	\$##.##
#####	XXXX XXXXX	##/##/####	\$##.##
#####	XXXX XXXXX	##/##/####	\$##.##

### Table Reference

Column Name	Description	Reference
Order Number	Identification number for transaction	Orders Table (order_id)
Customer Name	Customer Name for transaction	Customers Table (customer_name)
Date of Transaction	Date of customer transaction	Orders Table (employee_state)
Payment	Full payment for transaction	Orders Table (payment_cost)

Customer Payment Transactions for Services

Order Number	Customer Name	Date of Transaction	Service	Payment	Discount
#####	XXXX XXXXX	##/##/####	XXXXXX	\$##.##	XXXXXX
#####	XXXX XXXXX	##/##/####	XXXXXX	\$##.##	XXXXXX
#####	XXXX XXXXX	##/##/####	XXXXXX	\$##.##	XXXXXX
#####	XXXX XXXXX	##/##/####	XXXXXX	\$##.##	XXXXXX

### Table Reference

Column Name	Description	Reference
Order Number	Identification number for service transaction	Payment_Details_Services Table (order_id)
Customer Name	Customer Name for transaction	Customers Table (customer_name)
Date of Transaction	Date of customer transaction	Orders Table (order_date)
Service	The service performed	Services (service_name)
Payment	Cost of service after the discount is applied (if applicable)	Payment_Details_Services Table (service_cost)
Discount	Discount name for service if applicable	Discount Table (discount_name)

# Customer Payment Transactions for Parts

Order Number	Customer Name	Date of Transaction	Part	Payment	Discount
#####	XXXX XXXXX	##/##/####	XXXXXX	\$##.##	XXXXXX
#####	XXXX XXXXX	##/##/####	XXXXXX	\$##.##	XXXXXX
#####	XXXX XXXXX	##/##/####	XXXXXX	\$##.##	XXXXXX
#####	XXXX XXXXX	##/##/####	XXXXXX	\$##.##	XXXXXX

### Table Reference

Column Name	Description	Reference
Order Number	Identification number for service transaction	Payment_Details_Parts Table (order_id)
Customer Name	Customer Name for transaction	Customers Table (customer_name)
Date of Transaction	Date of customer transaction	Orders Table (order_date)
Part	Name of part purchased	Parts (part_name)
Payment	Cost of part after the discount is applied (if applicable)	Payment_Details_Parts Table (part_cost)
Discount	Discount name for service if applicable	Discount Table (discount_name)

# Inventory

Part Name	Number in Stock	Supplier	Vehicle Model	Cost
XXXXXX XXXXX	##	XXXXXXX	XXXXXX	\$##.##
XXXXXX XXXXX	##	XXXXXXX	XXXXXX	\$##.##
XXXXXX XXXXX	##	XXXXXXX	XXXXXX	\$##.##
XXXXXX XXXXX	##	XXXXXXX	XXXXXX	\$##.##

### Table Reference

Column Name	Description	Reference
Part Name	Name of part	Parts Table (part_name)
Number in Stock	Number of that part in stock	Part Table (parts_in_stock)
Supplier	Name of part supplier	Supplier Table (supplier_name)
Vehicle Model	Vehicle model that uses that specific part	Parts Table (model)
Cost	Cost of part	Parts Table (part_cost)



Jobs currently in service

Job Number	Vehicle Number	Employee	Customer	Completion Date
#####	#####	XXXX XXXXXXXX	XXXX XXXXXXXX	##/##/####
#####	#####	XXXX XXXXXXXX	XXXX XXXXXXXX	##/##/####
####	#####	XXXX XXXXXXXX	XXXX XXXXXXXX	##/##/####
####	#####	XXXX XXXXXXXX	XXXX XXXXXXXX	##/##/####

### Table Reference

Column Name	Description	Reference
Job Number	Identification number for current job	Jobs Table (job_id)
Vehicle Number	Vehicle number for specific job	Jobs Table (vehicle_id)
Employee	Employee name in charge of the job	Employees Table (employee_name)
Customer	Name of the customer the job is for	Customers Table (customer_name)
Completion Date	Date of completion	Jobs Table (completion_date)

# APPENDIX

# Memorandum

To: Bruce Myers

From: Julio Barrios, President  
Rapid Response Auto Service

Date: 1/27/2014

Re: Computer Support for Business Operation

---

Our company provides "instant" service on all types of cars and trucks. We do oil changes and other basic services while the customer waits. We also inspect various replaceable parts with the idea of selling replacements if they are defective. These include headlamps and other bulbs, belts, air filters and other items. Thus we must maintain an adequate stock of these items. We provide several qualities of oil which are sold at different prices. There are standard fees for basic services and other costs for individual items. We advertise heavily, providing discount coupons in many formats, so our system has to allow for these discounts but we must also be aware of the expiration dates of the various discounts. We really need a computerized list of all the coupons that are issued, with the ability to remove the ones that expire when they are no longer valid. We also need to keep records of the vehicles that we service so that we may reference standard lists that contain recommendations from vehicle manufacturers at various mileage levels.

We do not have a good method of deciding when to order parts and sometimes find a needed part unavailable and lose a sale. We need the computer to help us keep the needed parts in stock based on the history of past sales. It needs to create orders for us as well as provide reports that show the activity in our inventory that will assist us in business decisions.

We now try to do mailings that remind customers when their car needs servicing but we have no organized way of doing that. We need computerized help on that as well.

We also have trouble with the amount of time that it takes to service a vehicle. It takes a good while for us to greet the customer and locate their vehicle in our records so that we can make recommendations on what services they need. We need to be able to speed up this process.

I feel certain that your company can help us with all of our computer related issues. We would like for you to schedule a meeting with me to review our business and propose a new computerized system.

TO: Arisha Majors  
Mendy Davis  
Justin Kenner  
Logan Steelsmith ✓

FROM: Bruce Myers *BM*

DATE: January 27, 2014

SUBJECT: Appointment to Project Team

You have each been appointed to a team to conduct an initial system study of the project whose description you will receive. You should elect a chairperson for the group. This person will serve for the duration of the project. You should schedule a meeting with me to occur no later than the end of the day on Tuesday, February 11 so that we may discuss the project with its owner. Prior to this meeting you should hold one or more organizational meetings. The group should draft a list of questions about the project to bring to the meeting. This list should be duplicated with one copy for each team member and one for me. Email my copy to me in advance. Notify me of the name of the chairperson on or before the day of the meeting. The project is either described on the attached memorandum or will be provided to you later.

Group meetings are an essential part of the course. Every effort should be made to schedule them at mutually convenient times. Meetings with me should be set at free times on my schedule. Do not finalize plans for a meeting without confirming the time with me. Group meetings are also subject to the regulations distributed at the beginning of the semester.

# Questions and Answers from Contact Meeting with Dr. Myers

February 5, 2014

Question 1: What is the company doing now? How are they storing the data? Is something such as a database in place already or are we building the system from the ground up?

**Answer:** Assume they're using a mixture of spreadsheets, whatever way we can store the data, not anything organized, not a database at all. The group is pretty much building from the ground up. A lot of businesses do it with whatever somebody set up for them.

Question 2: Do they have remote sites?

**Answer:** There is only one site.

Question 3: How much information do we have on the current customer?

**Answer:** As far as the information on the current customers, you won't necessarily be keeping detailed information. You would hope you would have the customer's name, address, phone number, and e-mail address. So we could e-mail them when they're supposed to get their car serviced or we could send them regular mail. So we'd hope to have basic information. It's hard to keep up with e-mail addresses.

Question 4: When they say mailings do they mean e-mail or letters or both? If e-mail, does the company already have the e-mail addresses?

**Answer:** Mailings could be either. The customer could get both e-mails and regular mail.

Keeping the current e-mails is hard to do. We want to continue to ask people to update their e-mails every time there's a change.

Question 5: Should we have a list of the discounts and expiration dates of discounts? Which format for discounts does the computer use?

**Answer:** Discounts in the form of like \$8 off next oil change, usually expiring a certain number of months from when the notification is sent out. For example, one month or two months.

Usually a discount for an amount of money but occasionally we might run a discount for a free air filter to the customer's specified vehicle. Every discount has to expire.

Question 6: Is there a set price for all replacement work or do all the prices differ?

**Answer:** There would be a chart to tell us if we have to replace something and it would definitely be a different amount depending on what it is and how long it takes to do the job.

Question 7: What system are they using to keep track of customer vehicles?

**Answer:** We use the VIN number to keep track of the customer vehicle. You won't be able to interface with it but we like to use a barcode scanner that scans the VIN number and allows you to enter that number.

Question 8: How are they keeping track of the parts they have now so they know when to reorder or do they do inventory manually?

**Answer:** The parts that they have now is an inventory system. They're pretty much looking at the shelf and doing counts. But they would expect you to fix the computer so that it would keep

up with a number of items on hand and over time you would hope to create a history so the reordering of the inventory is determined by the minimum or the low limit. The faster a product moves the higher you set the low limit. The low limit would need to be the field so that when the quantity reaches the low limit it goes on the list to be reordered. We can't reorder one item because they come from the same supplier (or company) and you have to be able to order other items from that company as well. The company as a rule won't ship you one item. If you're going to place an order they make it be \$300 or \$500. They have a minimum order amount. Have to do work on inventory, more than a little.

Question 9: Should we have a list of basic services or is what information that was included in the memo every service they offer? What are the fees and costs for services?

**Answer:** Basic services include oil changes, tire rotation, everything from bulb replacement to other general maintenance, filter replacement, brake work, A/C service. It could be an ongoing list. There would be fees and costs that went with them in order to do that.

Maintenance schedules for these vehicles that we could get access to. Maintenance schedule says at 50,000 miles, for example, replace the transmission fluid. We want to be able to tell them that and then we have a fee for doing that.

Question 10: How long does it take now? What time limit is considered to be "good" and what is considered "bad"?

**Answer:** We would like to think we could do a standard oil change and get people in and out in 15 minutes (15 – 20 minutes) and it may take an hour. The purpose of this business is so people



don't have to leave their vehicle and come back. That once was the model for everyone that had a car service. We're part of the generation of doing things faster.

Question 11: Do we need to know the mileage when each service is to occur?

**Answer:** You do need to keep up with the mileage. When you service a car the mileage needs to be recorded. That's how we know when we would generally expect them to need to have it serviced again. We would tell them when they leave or give them a sticker for their vehicle. We would use 3,000 miles as a guideline for when it needs to be done. We'd have to kind of guess when they've driven that far or do a mailing for them.

Question 12: Could we get a list of suppliers?

**Answer:** Will have a supplier list with information on them being basic information: name, address. Assume every item comes from only one supplier.

Question 13: Do they want us to keep track of employees? Do they want to keep track of which employee works on which vehicle?

**Answer:** Yes, we want to know which employee worked on which vehicle.

At the end of the day what we're actually interested in is the amount of money the customers paid that were served by a certain employee. Think about how to do that because usually if there's four or five guys working they may all help out. But they'll be one who is the primary contact. We want to know as the primary contact how much business are these people generating?

We would like to think about having a procedure that we would normally go through and be able to check it off in the computer. When they come in we open a screen for them and it's going to say tail light check, signal light check, brake light check. And we'd like to be able to note that we did that and another place to note if we warned them that there's a problem. We want to be able to say that we asked them about this and what was the result.

We have to be able to know what coupons are out and be able to put new coupons out there. Certain times of the year we could expect people to work and do a lot more to their vehicles because they're getting ready to go on vacation. We might want a few more offers around April, May, and June. We want to be able to time all of that.

Ought to be able to capture the method of payment. No checks. All popular credit cards or cash. Will have a credit card terminal.

## Task Assignment List

### Justin Kenner

- (2) Manager Log In
- (2) Manager
- (2.4) Customers
- (2.9) Check Out
- (2.1.2) Parts Selection
- (2.2.1) Daily Reports
- (2.3) Employees
- (2.4.1) Look-Up Customers
- (2.4.1.3) Look-Up Insurance
- (2.4.1.1.2) Vehicle Maintenance
- (2.4.2.3) Add Customer Insurance
- (2.5) Discounts
- (2.6.2) View Parts from Supplier
- (2.7) Current Jobs
- (2.8.2.1) Update Position Maintenance
- (2.9.1) Get Customer Bill
- (3.2) Customers
- (3.5) Current Jobs
- (3.1) Inventory
- (3.2.2) Add New Customer
- (3.2.1.2) Look-Up Vehicle
- (3.2.2.3) Add Insurance
- (3.3.2) View Expired Discounts
- (3.5) Current Jobs

## Task Assignment List

### Justin Kenner

- (2) Manager Log In
- (2) Manager
- (2.4) Customers
- (2.9) Check Out
- (2.1.2) Parts Selection
- (2.2.1) Daily Reports
- (2.3) Employees
- (2.4.1) Look-Up Customers
- (2.4.1.3) Look-Up Insurance
- (2.4.1.1.2) Vehicle Maintenance
- (2.4.2.3) Add Customer Insurance
- (2.5) Discounts
- (2.6.2) View Parts from Supplier
- (2.7) Current Jobs
- (2.8.2.1) Update Position Maintenance
- (2.9.1) Get Customer Bill
- (3.2) Customers
- (3.5) Current Jobs
- (3.1) Inventory
- (3.2.2) Add New Customer
- (3.2.1.2) Look-Up Vehicle
- (3.2.2.3) Add Insurance
- (3.3.2) View Expired Discounts
- (3.5) Current Jobs
- Screen Layouts

## **Arisha Majors**

- (3) Employee Log In
- (2.3) Employees
  - (2.1.1) Order Parts
  - (2.1.5) Top Parts
- (2.2) Reports
  - (2.2.2) Weekly Reports
- (2.3.2) Add New Employee
  - (2.4.1.2) Look-Up Vehicle
    - (2.4.1.1.3) Insurance Maintenance
- (2.4.2) Add New Customer
- (2.5.3) View Expired Discounts
- (2.6.1) View Suppliers
- (2.8) Position
  - (2.8.1) Add Position
- (3.1) Inventory
- (3.6) Check Out
  - (3.2.1) Look-Up Customer
  - (3.2.1) Look-Up Customer
    - (3.2.2.1) Add Credit Card
- (3.3) Discounts
  - (3.4.1) View Suppliers
- (3.6.1) Get Customer Bill
- (3.6) Check Out
- Entity Relationship Diagram

## **Logan Steelsmith**

- (1) System Log In
- (2.2) Reports
- (2.5) Discounts
- (2.7) Current Jobs
- (2.1.4) Parts on Order
- (2.2.3) Monthly Reports
- (2.3.1) View Current Employees
- (2.4) Customers
- (2.4.2) Add New Customer
- (2.4.1.1.1) Credit Card Maintenance
- (2.4.2.2) Add Customer Vehicle
- (2.5.1) Create New Discount
- (2.6) Suppliers
- (2.6.3) Add Supplier
- (2.7.1) Load Jobs
- (2.8.2) Update Position
- (3) Employee
- (3.3) Discounts
- (3.1.2) Check Stock
- (3.2) Customer
- (3.2.1.1) Look-Up Credit Card
- (3.2.2.2) Add Vehicle
- (3.3.1) View Existing Discounts
- (3.4) Suppliers
- Hierarchy Chart

## **Mendy Davis**

- (2.1) Inventory
- (2.6) Supplies
- (2.8) Position
- (2.1) Inventory
- (2.1.3) Check Stock
- (2.2.4) Yearly Reports
- (2.3.1.1) Employees Maintenance
- (2.4.1) Look-Up Customers
- (2.4.1.1) Look-Up Credit Card
- (2.4.2.1) Add Credit Card
- (2.5.2) View Existing Discounts
- (2.6.1.1) View Suppliers Maintenance
- (2.7.1.1) Load Jobs Maintenance
- (2.8.3) View Employee Position
- (2.9) Check Out
- (3.4) Suppliers
- (3.1.1) Parts Selection
- (3.1.3) Parts On Order
- (3.2.1.3) Look-Up Insurance
- (3.2.2) Look-Up Customer
- (3.4.2) View Parts from Suppliers
- (3.5.1) Look-Up Current Job

Tables

Table Descriptions

#### DESIGN PHASE MEETINGS FOR GROUP 4

Thursday, February 27: 10:45 a.m. – 11:10 a.m. – Maynard Classroom and Computer Lab

Discussed design phase report and what tables might be needed

Wednesday, March 5: 6:00 p.m. – 9:00 p.m. – Skype

Assigned team members specific parts of design phase and report, designed sample hierarchy charts

Friday, March 7: 8:00 a.m. – 9:30 a.m. – Maynard Computer Lab

Discussed table format and conclude rough draft of tables needed for new system. Revised hierarchy chart

Monday, March 10: 1:00 p.m. – 4:00 p.m. – Public Library

Discussed and reviewed rough draft of screen layouts for new system

Wednesday, March 12: 2:00 p.m. – 4:00 p.m. – Public Library

Discussed and reviewed table descriptions

Saturday, March 15: 1:00 p.m. – 4:00 p.m. – Skype

Reviewed revised list of tables

Tuesday, March 18: 7:30 a.m. – 9:30 a.m. – Maynard Computer Lab

Reviewed other sample design phase reports provided

Wednesday, March 19: 7:30 a.m. – 10:45 a.m. – Maynard Computer Lab

Reviewed and discussed what each team member had completed for their part in the design phase report

Thursday, March 20: 7:30 a.m. – 9:30 a.m. – Maynard Computer Lab

Revised table descriptions and tables

Friday, March 21: 7:30 a.m. – 9:30 a.m. – Maynard Computer Lab

Discussed hierarchy chart and prepared specific task list

Monday, March 24: 7:30 a.m. – 11:00 a.m. – Maynard Computer Lab

Discussed and prepared sample Entity Relationship Diagram. Finished the detailed screen layouts with descriptions of each screen and which tables each of them come from, detailed reports description, and the hierarchy chart descriptions.

Tuesday, March 25: 7:30 a.m. – 9:30 a.m. – Maynard Computer Lab

Revised Entity Relationship Diagram. Prepared report contents in the order that it would appear in the Design Phase notebook. Created title pages for each section to better separate the



contents. With the exception of minor things, such as the table of contents, the book is almost complete.

Wednesday, March 26: 7:30 a.m. – 11:00 a.m. – Maynard Computer Lab

Printed out the report for the Design Phase. Discussed the contents to see if any team member had any questions or concerns.