

A black and white photograph of two identical women standing side-by-side. They have long, dark hair and are wearing dark, high-necked tops. The background is a plain, light-colored wall. Overlaid on the lower half of the image is the title 'Same Difference' in a large, white, serif font, and below it, the subtitle 'A Collaboration by Faith and Hope Watkins' in a smaller, white, sans-serif font.

Same Difference

A Collaboration by Faith and Hope Watkins

THESIS STATEMENT

Through this body of work, identical twins, Faith and Hope Watkins, talk about personal identity struggles in a life where many consider them as one. They speak on the texture of their relationship, the recognition and revelation of their similarities and differences, and the beauty of togetherness.



THESIS PROPOSAL

I plan to show the uniqueness of twinship in a collaboration with my identical twin, Faith. We will collaborate to talk about the beauty of togetherness, struggles we've faced and letting the audience in on what this lifestyle can look like. We will talk about the texture of our relationship and the recognition and revelation of our similarities and differences due to our identical upbringings. We will also be discussing identity issues in a life where many consider us one, not individuals.

ARTIST BIO

I'm Hope Watkins. I'm born and raised in Tennessee which is where I am currently based. I am a recent graduate of Austin Peay State University in Clarksville, TN with a BFA in Studio Art. My work primarily focuses on life experiences and emotions. I work with multiple medias including paint, ink, collage and ceramics.

ARTIST STATEMENT

I significantly value relationships and the emotions and experiences that come with them. Growing up as an identical twin has allowed me to be greatly connected to my family and people. Although there are mostly pros to living life as a twin, growing up there has been difficulties faced in finding our own personal identities and expressions. Through this body of work, we are working together through these difficulties in ways we've never expressed. We use this space to talk about our sameness but also our differences, something often people overlook. Throughout it is consistent with the importance and value of our friendship and togetherness.

CV

HOPE WATKINS ARTIST

hope.artist@yahoo.com Clarksville, TN hopewatkins.weebly.com
instagram.com/hopek.art

PROFILE

2020 Graduate of Austin Peay State University with a BFA in Studio Art. I am a multimedia analog artist, focusing in painting and drawing.

EDUCATION

BFA Studio Art, Austin Peay State University
2016 - 2020, Clarksville, TN

AS Liberal Arts, Austin Peay State University
2016 - 2018, Clarksville, TN

EXHIBITIONS

2019
Ruminate, Barbara Beech Gallery, Clarksville, TN

Light Space & Time Gallery, Virtual

51st Annual Student Juried Exhibition, Austin Peay State University, Clarksville, TN

Measuring Histories Exhibition feat. Sonya Clark, The New Gallery, Clarksville, TN

Different Strokes, Austin Peay State University, Clarksville, TN

EXHIBITIONS

2020

Same Difference A Collaboration by Faith and Hope Watkins, Virtual

52nd Annual Student Juried Exhibition, Austin Peay State University, Clarksville, TN

WORKSHOPS/SEMINARS

2019

Histories Senior Seminar

Lead by Washington based fiber artist, Sonya Clark with featuring renowned artists Dario Robleto and Joyce Scott.

Connectedness Prints Workshop

Printmaking workshop with Detroit based printer, book artist and papermaker, Amos Paul Kennedy Jr.

BIBLIOGRAPHY

<https://locatearts.org/exhibitions/clarksville/measuring-histories>

<https://mikefink.myportfolio.com/measuring-histories-sonya-clark>

<https://www.apsu.edu/news/april-2020-art-exhibits-online.php>

<https://www.clarksvilleonline.com/2020/04/09/austin-peay-state-university-art-design-students-display-senior-exhibits-online/>

4150 PRESENTATION

Thesis Proposal

Hope and Faith
Watkins
Art 4150-13
Fall 2019



THESIS

I plan to show the uniqueness of twinship in a collaboration with my identical twin, Faith. We will collaborate to talk about the beauty of togetherness, struggles we've faced and letting the audience in on what this lifestyle can look like. We will talk about the texture of our relationship and the recognition and revelation of our similarities and differences due to our identical upbringings. We will also be discussing identity issues in a life where many consider us one, not individuals.



METHODOLOGY AND PLANS

We plan to explore different mediums that allow a variety of experiences for us and the viewer.

- We plan to produce paintings from self-given prompts without influencing each other at all throughout the making process. Ultimately discovering similarities and differences when approached with the same idea.
- Double blind painting, in which we will explore our individual art styles without influencing each other again but this time while working from the same reference image(s).
- Experiment with film interview to show more focus on our similarities/differences verbally and visually.
- Photography to emphasize individual identity. Constructed versus not, timeline photos.



Identical Twins (Diane Arbus Inspired) 2019

This exhibition has much to do with experimentation in identity and the creative process behind the works produced.

INFLUENCES

- **Diane Arbus**
in *Identical Twins*, emphasizes facial identity in a seemingly identical pair.
- **The Lynn Twins**
focus on fluidity and togetherness through painting together as one.
- **Barbara Schave Klein**
a writer who is also an identical twin that demonstrates and studies how twins can have complicated and intense relationships that range from over-identification or excessive closeness to alienation and conflict.



Diane Arbus
Identical Twins, Roselle, New Jersey, 1967

4150 PRESENTATION

RESEARCH/ ADDITIONAL INFLUENCES



Doug and Mike Starn
Photography/Metaphor



Paul and Phil Gayter
Connection or Coincidence?

COMPLETED WORKS

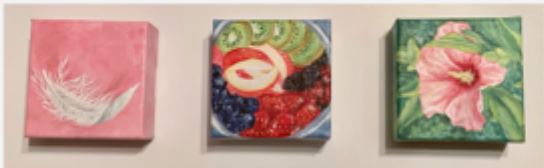
Delicate

Arrange

Lively



Faith



Hope

SOLIDIFIED WORK

- **Prompts - One painting, one writing, 4 other non-medium specific.**

1. Reaction/response to a particular song. (Abstracted)
2. Evocation of a sense of precision.
3. Painting first thing that comes to mind when thought of a word. (3) 4x4: Lively, Delicate, Arrange.
4. Make a piece about a reflection.
5. Something/anything yellow? A color?
6. Writing (Response to the question) "What is the focal point of admiration, or cynosure?"

- **Video Questions -**

1. How does your relationship influence outside relationships?
2. What would your friends say about you?
3. Where do you find inspiration?
4. 5-year goal?
5. What do you hope never changes?
6. What takes up too much of your time?

COMPLETED WORKS



4150 PRESENTATION

DOUBLE BLIND PAINTING PROGRESS



5.5' x 7.5'

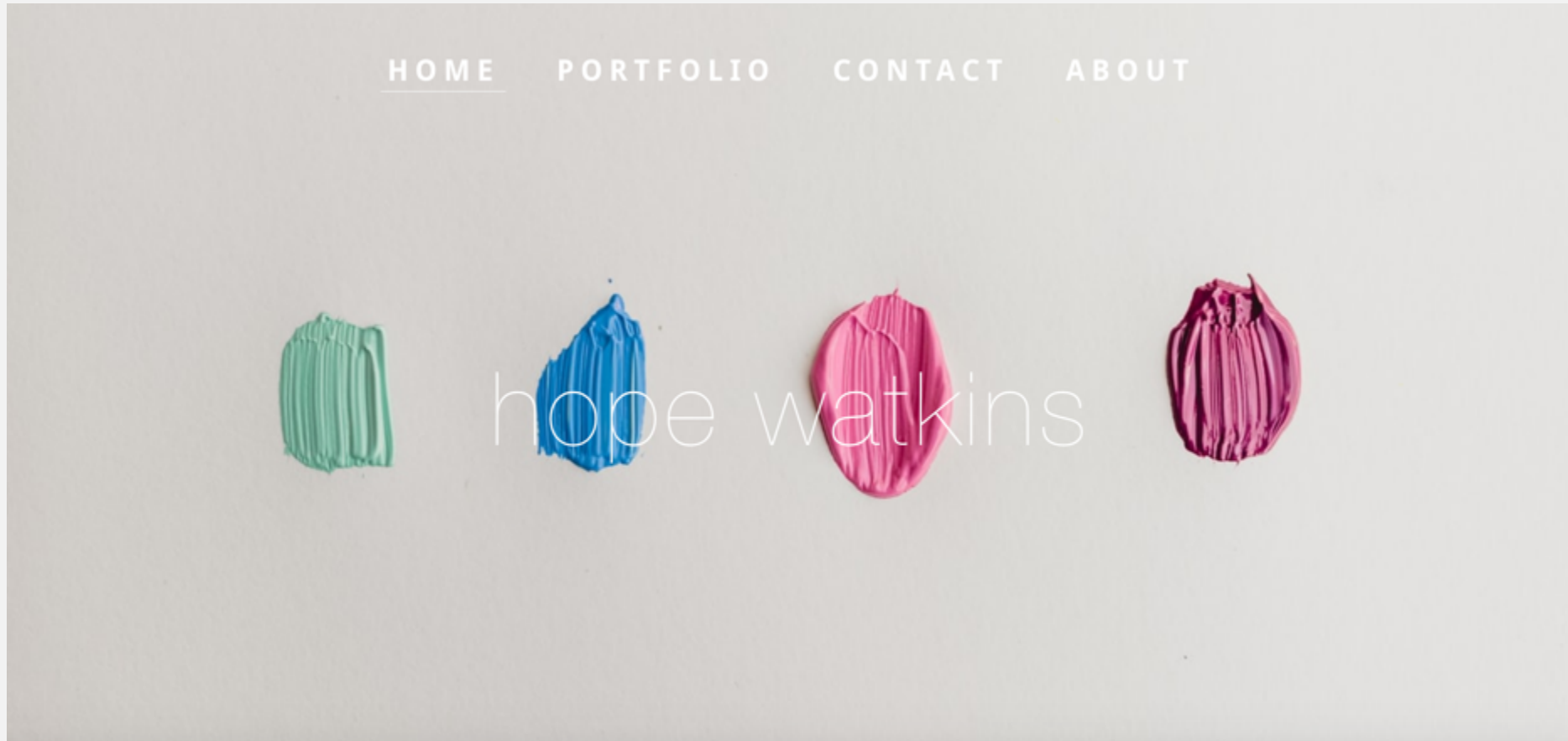


INSTALLATION IDEAS

- Write Artist Statements on windows in gallery
- Large text, stickers/stencils to make clear what viewer is seeing, possibly no labels
- Largest painting on back wall
- Mirroring quality setup for a set of paintings
- Interview projected on right side wall next to windows

WEBSITE

<https://hopewatkins.weebly.com/>



PROCESS DOCUMENTATION



PROCESS DOCUMENTATION

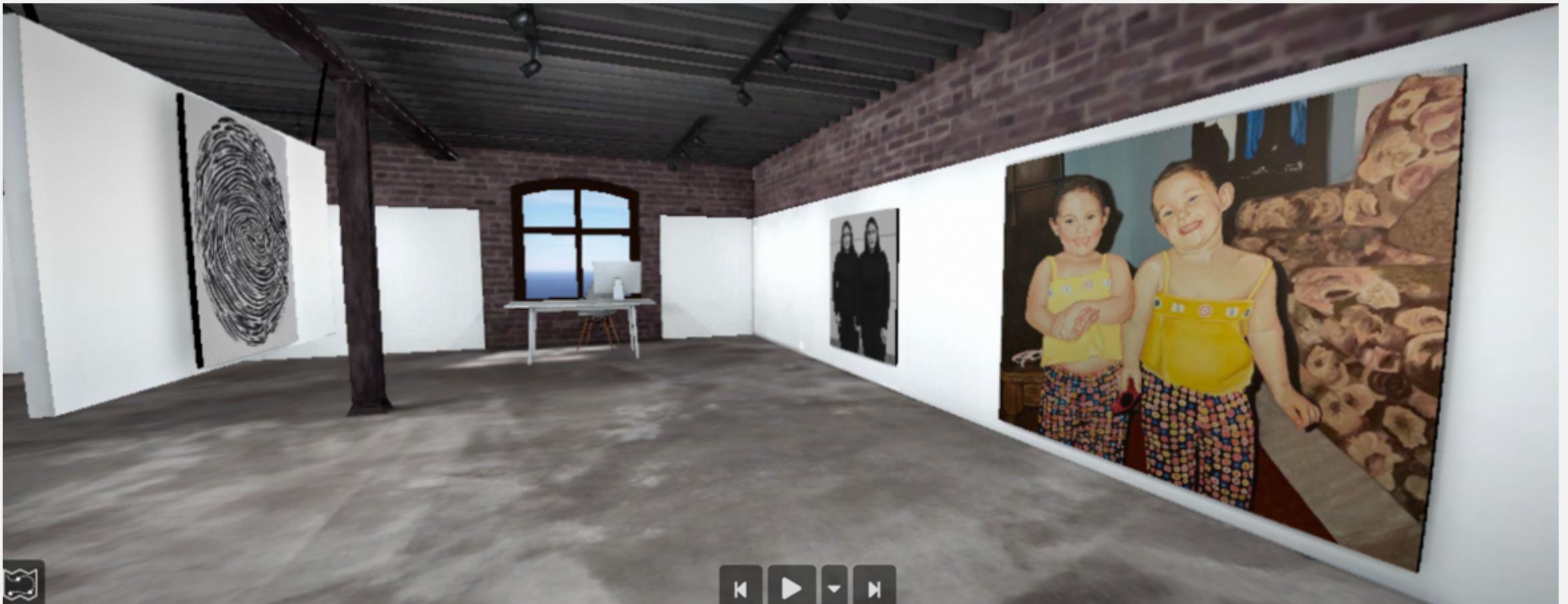


PROCESS DOCUMENTATION



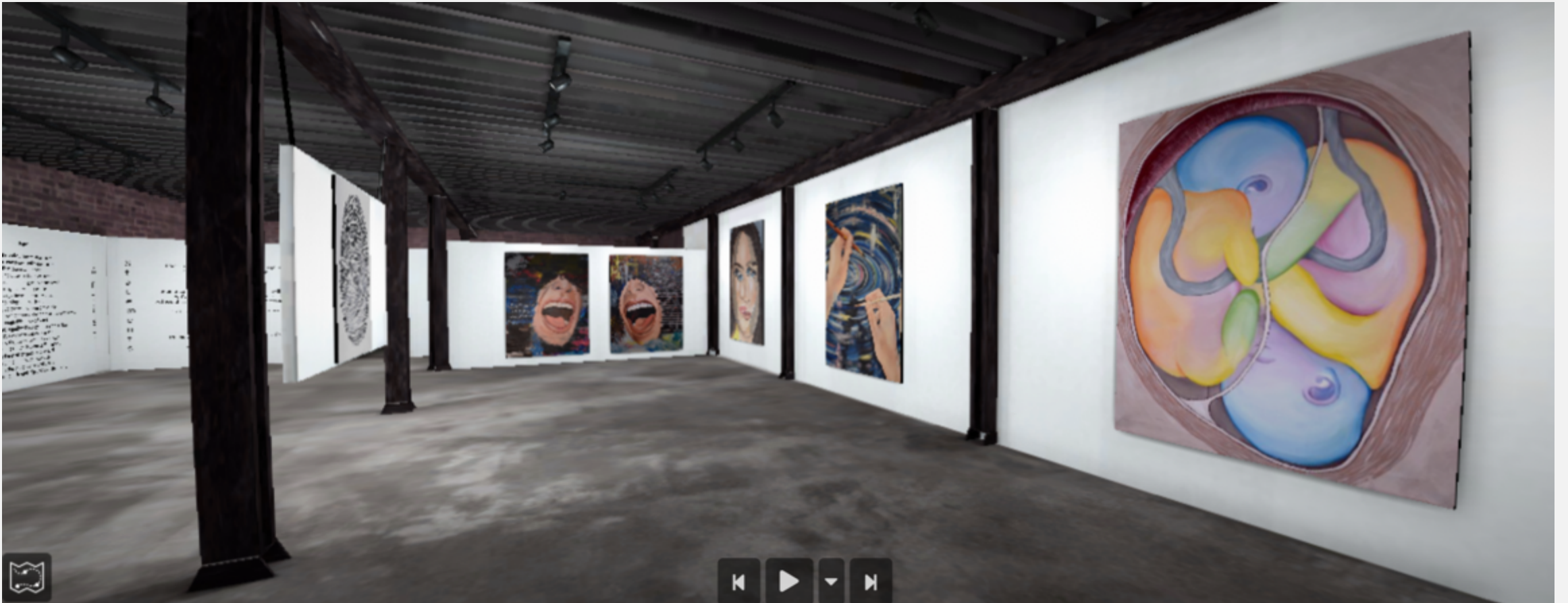
FINAL DOCUMENTATION

Virtual Exhibition: <https://www.artsteps.com/view/5e7e335cdc0dd3184635d53c>



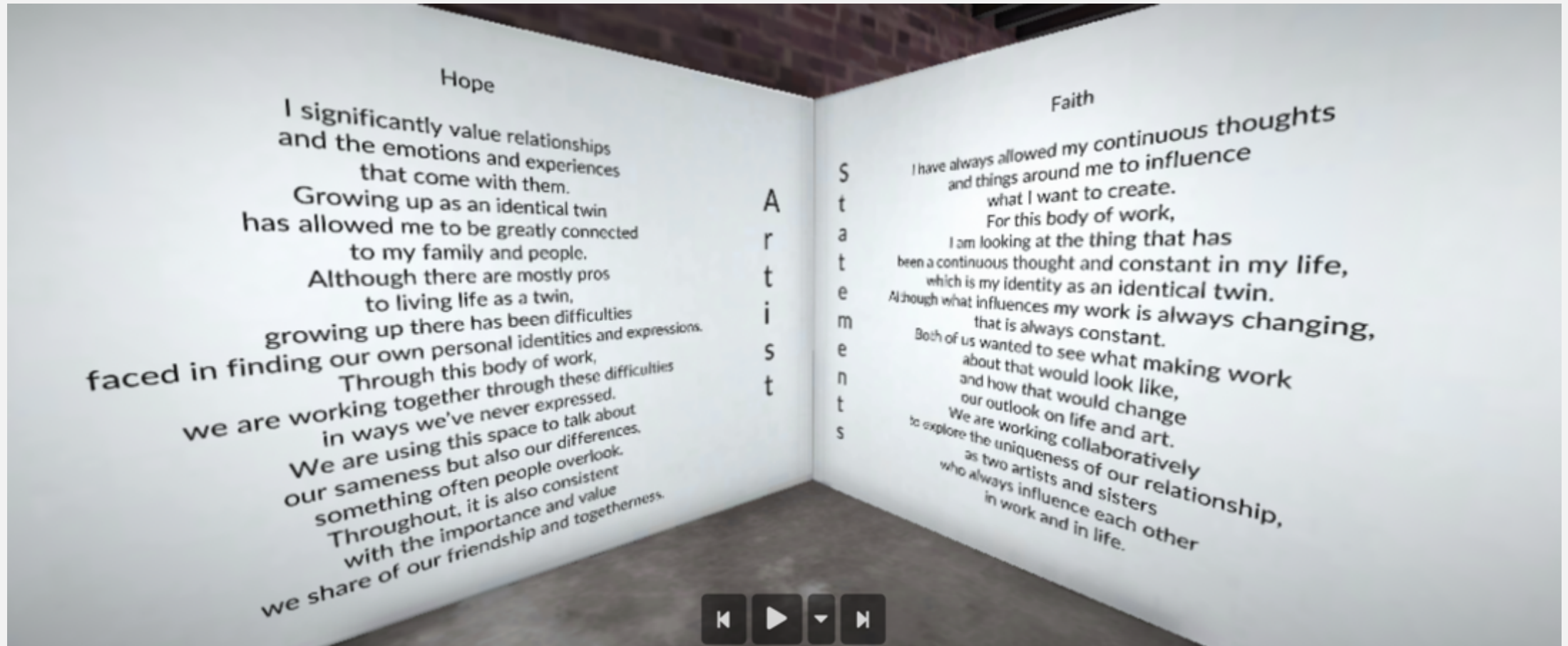
FINAL DOCUMENTATION

Virtual Exhibition: <https://www.artsteps.com/view/5e7e335cdc0dd3184635d53c>



FINAL DOCUMENTATION

Virtual Exhibition: <https://www.artsteps.com/view/5e7e335cdc0dd3184635d53c>



FINAL DOCUMENTATION



This is a double blind painting. The first work we completed during this process, we were interested to see how our painting application and styles compared. Hope worked solely on her portrait on the left, while Faith worked on her portrait on the right. We worked on these at different times, allowing no influence on each other to further see that point. This subject depicts a developmental age in which we were also finding our own personal identities.

66 x 90 in

FINAL DOCUMENTATION



This image is inspired by renowned photographer Diane Arbus's "Identical Twins". This seemingly identical photograph highlights detail in facial expression to emphasize distinction and identity between twins.

FINAL DOCUMENTATION



This piece focuses on the hands of creation between us. Highlighting our trait of being mirror twins with different dominate hands, while showing togetherness throughout this process. The reflection represents our awareness of growth and space as we work together.

48 x 36 in

FINAL DOCUMENTATION

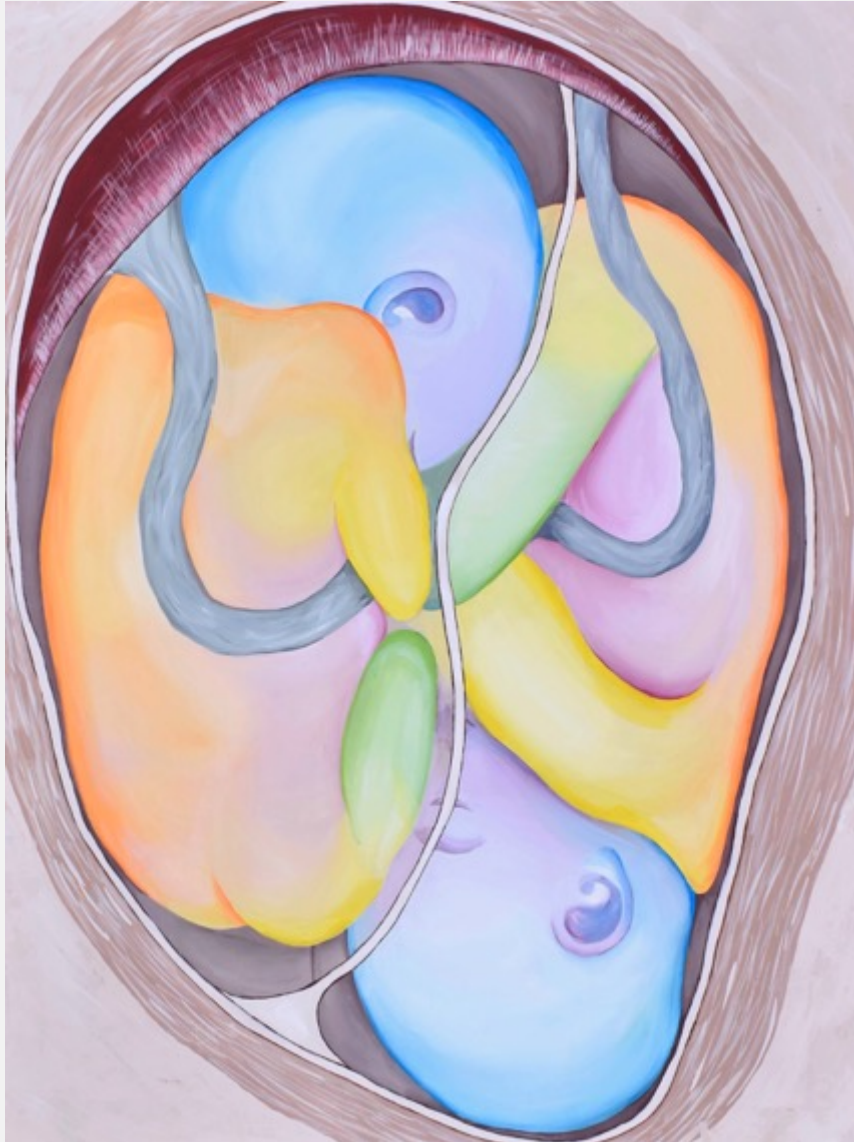


Our self-portrait's. This showcases our similarities and differences through our appearance, but also spotlights how people do not see our singularity and character.

With implied irony that references the phrase "seeing double", we still wanted to showcase distinction.

48 x 36 in

FINAL DOCUMENTATION



This piece showcases our initial bond, as “miracle babies” born three months premature. In the womb, we were positioned this way before birth. We feel this is a reflection on our self-portraits.

48 x 36 in

FINAL DOCUMENTATION



These two pieces show the struggle we have faced with wanting to be heard. As twins, it has been easy to lose our individual voices. As people often label us as one, we have grown up trying to escape this, to find ourselves with desire to let our personal identities be known. Often resulting in chaos, lack of confidence and confusion.

Both
48 x 36 in

FINAL DOCUMENTATION



A duo working with each other in the exhibit. This is emphasizing our hands in creating this show. “Identical” depictions while facing other paintings in the gallery that depict our individuality, creates a tension between the two. People often think twins have the same fingerprint and that is false. However, in this way we showcase our individual hands while creating these works together. Highlighting the premise of close-mindedness in thinking all twins are “one way”. This common print depicts predictability in a life where there is much more to our individualism.

FINAL DOCUMENTATION

Documentation of 2 more ceramic works N/A at this time due to city restrictions.

THESIS PROCESS/ SELF CRITIQUE

I have learned a lot throughout this thesis process. I have learned a lot of techniques and strategies for working on a long-term project and everything it takes to see it through to its exhibit. My professor, Paul Collins, was greatly beneficial with encouragement and enthusiasm for the projects and the well-being of students. Understanding and experiencing a process that might not always go to plan and ways to problem solve has been a great lesson for future projects. This collaboration and process with my sister has been greatly special. We have been able to plan, work through, and really accomplish and create something we are both proud of. To be able to represent this topic seems like a perfect fit for my capstone. We were able to take our love for creating while using the knowledge and tools we've gained from this program to create a unique and personal show that embodies our lives as twins and as artists.